

Anti-Phospho-Histone H4 (Ser1) HIST1H4A Rabbit Monoclonal Antibody, Clone#RM194

Catalog Number: P14495

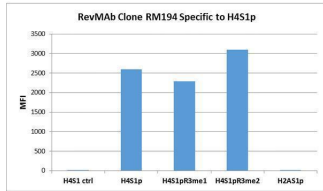
Overview

Product Name	Anti-Phospho-Histone H4 (Ser1) HIST1H4A Rabbit Monoclonal Antibody, Clone#RM194
Reactive Species	Human, Vertebrates
Description	Boster Bio Anti-Phospho-Histone H4 (Ser1) HIST1H4A Rabbit Monoclonal Antibody, Clone#RM194 (Catalog # P14495). Tested in WB, ICC, ELISA, Luminex applications. This antibody reacts with Human, Vertebrates.
Application	ELISA, ICC, WB, Luminex
Clonality	Monoclonal RM194
Formulation	50% Glycerol/PBS with 1% stabilizing protein and 0.09% sodium azide This antibody is supplied in a stabilized formulation. Compatibility with conjugation reactions depends on the chemistry of the conjugation method used. For conjugation methods that are not compatible with the stabilizing components present in this formulation, a carrier-free antibody format is required.
Storage Instructions	Store at -20°C for one year. Avoid repeated freeze-thaw cycles.
Host	Rabbit
Uniprot ID	P62805

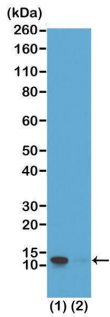
Technical Details

Immunogen	A phospho-peptide corresponding to the Phospho-Histone H4 (pSer1).
Cross Reactivity	This antibody reacts to Histone H4 phosphorylated at Serine 1. The reactivity is not affected by neighbor Arginine 3 modification. No cross-reactivity with Histone H2A phosphorylated at Serine 1.
Isotype	Rabbit IgG
Form	Liquid
Concentration	1 mg/mL
Purification	Protein A affinity purified from an animal origin-free culture supernatant
Suggested Dilutions	WB: 0.5 ug/mL - 2 ug/mL ICC: 1 ug/mL - 2 ug/mL ELISA: 0.2 ug/mL - 1 ug/mL Luminex: 0.1 ug/mL - 1 ug/mL.

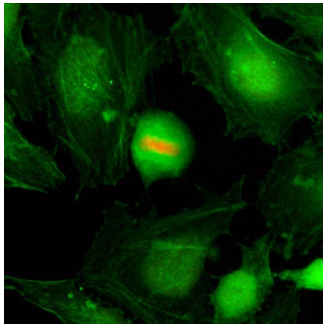
Anti-Phospho-Histone H4 (Ser1) HIST1H4A Rabbit Monoclonal Antibody, Clone#RM194 (P14495) Images



Specificity Test result RM194 specifically reacts to Histone H4 phosphorylated at Serine 1 (H4S1p). The reactivity is not affected by neighboring Arginine 3 modifications (H4S1pR3me1 and H4S1pR3me2). No cross reactivity with Histone H2A phosphorylated at Serine 1 (H2AS1p).



ICC result Immunocytochemistry of HeLa cells, using Anti-Phospho-Histone H4 (Ser1) Rabbit mAb RM194 (red). Actin filaments have been labeled with fluorescein phalloidin (green).



ICC result Immunocytochemistry of HeLa cells, using Anti-Phospho-Histone H4 (Ser1) Rabbit mAb RM194 (red). Actin filaments have been labeled with fluorescein phalloidin (green).

Submit a product review to [Biocompare.com](https://www.biocompare.com)

Submit a review of this product to [Biocompare.com](https://www.biocompare.com) to receive a \$20 Amazon.com giftcard! Your reviews help your fellow scientists make the right decisions. Thank you for your contribution.



Anti-Phospho-Histone H4 (Ser1) HIST1H4A Rabbit Monoclonal Antibody, Clone#RM194

For Research Use Only. Not for use in diagnostic procedures.