

Anti-Phospho Histone H2A (Thr121) HIST1H2AG Antibody

Catalog Number: P16777

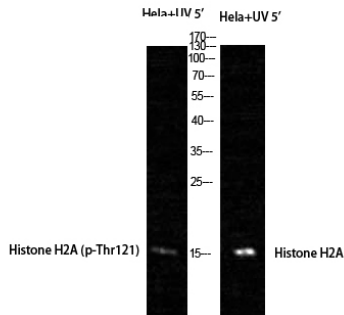
Overview

Product Name	Anti-Phospho Histone H2A (Thr121) HIST1H2AG Antibody
Reactive Species	Human, Mouse, Rat
Description	Boster Bio Anti-Phospho Histone H2A (Thr121) HIST1H2AG Antibody (Catalog# P16777). Tested in WB, IHC, ICC, IF, ELISA applications. This antibody reacts with Human, Mouse, Rat.
Application	ELISA, IF, IHC, ICC, WB
Clonality	Polyclonal
Formulation	PBS containing 50% glycerol, 0.5% stabilizing protein and 0.02% sodium azide. This antibody is supplied in a stabilized formulation. Compatibility with conjugation reactions depends on the chemistry of the conjugation method used. For conjugation methods that are not compatible with the stabilizing components present in this formulation, a carrier-free antibody format is required.
Storage Instructions	Store at -20°C for one year. For short-term storage and frequent use, store at 4°C for up to one month. Avoid repeated freeze-thaw cycles.
Host	Rabbit
Uniprot ID	POC0S8

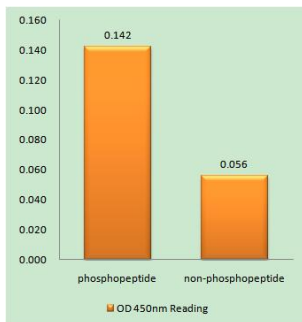
Technical Details

Immunogen	A peptide derived from human Histone H2A around the phosphorylation site of Thr121. Immunogen sequence location: 81-130
Isotype	Rabbit IgG
Form	Liquid
Concentration	0.5-1mg/ml, actual concentration vary by lot. Use suggested dilution ratio to decide dilution procedure.
Purification	The antibody was purified from rabbit antiserum by affinity-chromatography using phospho peptide. The antibody against non-phospho peptide was removed by chromatography using corresponding non-phospho peptide.
Suggested Dilutions	WB 1:500-2000 IHC 1:100 - 1:300. ELISA: 1:5000. ICC/IF 1:50-200

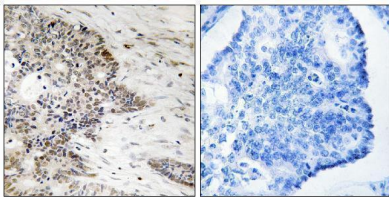
Anti-Phospho Histone H2A (Thr121) HIST1H2AG Antibody (P16777) Images



Western Blot analysis of HeLa+UV 5' cells using Phospho-Histone H2A (T121) Polyclonal Antibody.



Enzyme-Linked Immunosorbent Assay (Phospho-ELISA) for Immunogen Phosphopeptide (Phospho-left) and Non-Phosphopeptide (Phospho-right), using Histone H2A (Phospho-Thr121) Antibody



Immunohistochemistry analysis of paraffin-embedded human colon carcinoma, using Histone H2A (Phospho-Thr121) Antibody. The picture on the right is blocked with the phospho peptide.

Submit a product review to Biocompare.com

Submit a review of this product to Biocompare.com to receive a \$20 Amazon.com giftcard! Your reviews help your fellow scientists make the right decisions. Thank you for your contribution.



Anti-Phospho Histone H2A (Thr121) HIST1H2AG Antibody

For Research Use Only. Not for use in diagnostic procedures.