

Anti-Phospho POLR2A (Ser1619) Antibody

Catalog Number: P30431

Overview

Product Name	Anti-Phospho POLR2A (Ser1619) Antibody
Reactive Species	Human, Monkey, Mouse, Rat
Description	Boster Bio Anti-Phospho POLR2A (Ser1619) Antibody (Catalog# P30431). Tested in WB, IHC-P, IF, ICC, ELISA applications. This antibody reacts with Human, Mouse, Rat, Monkey.
Application	ELISA, IF, IHC-P, ICC, WB
Clonality	Polyclonal BEF-20
Formulation	PBS containing 50% glycerol, 0.5% BSA and 0.02% sodium azide.
Storage Instructions	Store at -20°C for one year. For short-term storage and frequent use, store at 4°C for up to one month. Avoid repeated freeze-thaw cycles.
Host	Rabbit
Uniprot ID	P24928

Technical Details

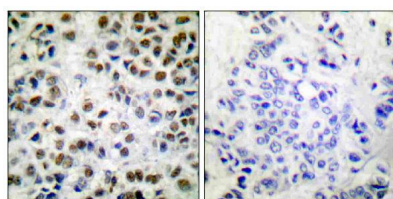
Immunogen	A peptide derived from human POLR2A around the phosphorylation site of Ser1619. Immunogen sequence location: 1585-1634
Predicted Reactive Species	Human
Isotype	Rabbit IgG
Form	Liquid
Concentration	0.5-1mg/ml, actual concentration vary by lot. Use suggested dilution ratio to decide dilution procedure.
Purification	The antibody was purified from rabbit antiserum by affinity-chromatography using phospho peptide. The antibody against non-phospho peptide was removed by chromatography using corresponding non-phospho peptide.
Suggested Dilutions	<p>Dilute the sample so that the expected range of concentrations fall within the detection range of this kit.</p> <p>If the expected range of concentration is unknown, a pilot test should be conducted to decide the optimal dilution ratio for your samples.</p> <p>Some PubMed article(s) citing the expression level of this target are as follows:</p> <p>Boster Bio's internal QC testing used:</p> <p>Western Blot, 1:500 - 1:2000</p> <p>Immunohistochemistry, 1:100 - 1:300</p> <p>Immunofluorescence, 1:200 - 1:1000</p>

	ELISA, 1:10000 Not yet tested in other applications.
--	---

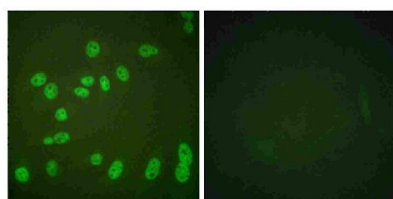
Anti-Phospho POLR2A (Ser1619) Antibody (P30431) Images



Western blot analysis of lysates from COS7 cells treated with EGF 200ng/ml 30', using POLR2A (Phospho-Ser1619) Antibody. The lane on the right is blocked with the phospho peptide.



Immunohistochemistry analysis of paraffin-embedded human breast carcinoma, using POLR2A (Phospho-Ser1619) Antibody. The picture on the right is blocked with the phospho peptide.



Immunofluorescence analysis of HeLa cells treated with PMA 125ng/ml 30', using POLR2A (Phospho-Ser1619) Antibody. The picture on the right is blocked with the phospho peptide.

1 Publications Citing This Product

1. PubMed ID: 28848320, Heparanase mediates vascular endothelial growth factor gene transcription in high-glucose human retinal microvascular endothelial cells.

Visit bosterbio.com/anti-phospho-polr2a-ser1619-antibody-p30431-boster.html to see all 1 publications.

Submit a product review to Biocompare.com

Submit a review of this product to Biocompare.com to receive a \$20 Amazon.com giftcard! Your reviews help your fellow scientists make the right decisions. Thank you for your contribution.



Anti-Phospho POLR2A (Ser1619) Antibody