

Anti-Phospho GRF-1 (Tyr1105) Antibody

Catalog Number: P30433

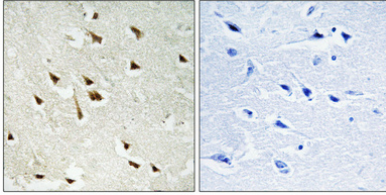
Overview

Product Name	Anti-Phospho GRF-1 (Tyr1105) Antibody
Reactive Species	Human, Mouse, Rat
Description	Boster Bio Anti-Phospho GRF-1 (Tyr1105) Antibody (Catalog# P30433). Tested in WB, IHC, ICC, IF, ELISA applications. This antibody reacts with Human, Mouse, Rat.
Application	ELISA, IF, IHC, ICC, WB
Clonality	Polyclonal
Formulation	PBS containing 50% glycerol, 0.5% stabilizing protein and 0.02% sodium azide. This antibody is supplied in a stabilized formulation. Compatibility with conjugation reactions depends on the chemistry of the conjugation method used. For conjugation methods that are not compatible with the stabilizing components present in this formulation, a carrier-free antibody format is required.
Storage Instructions	Store at -20°C for one year. For short-term storage and frequent use, store at 4°C for up to one month. Avoid repeated freeze-thaw cycles.
Host	Rabbit
Uniprot ID	Q9NRY4

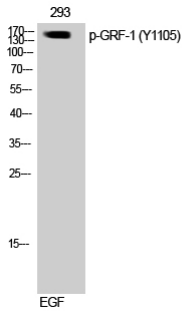
Technical Details

Immunogen	The antiserum was produced against synthesized peptide derived from human GRF-1 around the phosphorylation site of Tyr1105.
Isotype	Rabbit IgG
Form	Liquid
Concentration	0.5-1mg/ml, actual concentration vary by lot. Use suggested dilution ratio to decide dilution procedure.
Purification	The antibody was purified from rabbit antiserum by affinity-chromatography using phospho peptide. The antibody against non-phospho peptide was removed by chromatography using corresponding non-phospho peptide.
Suggested Dilutions	WB 1:500 - 1:2000. IHC 1:100 - 1:300. ELISA: 1:10000. ICC/IF 1:50-200

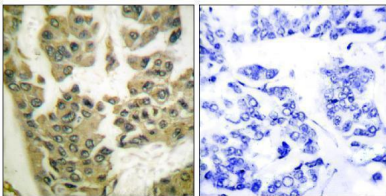
Anti-Phospho GRF-1 (Tyr1105) Antibody (P30433) Images



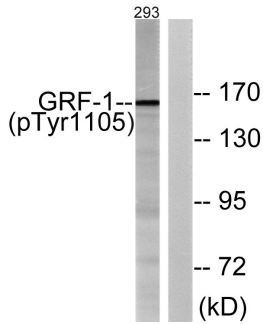
Immunohistochemical analysis of paraffin-embedded Human brain. Antibody was diluted at 1:100(4° overnight). High-pressure and temperature Tris-EDTA,pH8.0 was used for antigen retrieval. Negative contrl (right) obtained from antibody was pre-absorbed by immunogen peptide.



Western Blot analysis of 293 cells using Phospho-GRF-1 (Y1105) Polyclonal Antibody



Immunohistochemistry analysis of paraffin-embedded human breast carcinoma, using GRF-1 (Phospho-Tyr1105) Antibody. The picture on the right is blocked with the phospho peptide.



Western blot analysis of lysates from 293 cells treated with EGF 200ng/ml 30', using GRF-1 (Phospho-Tyr1105) Antibody. The lane on the right is blocked with the phospho peptide.

Submit a product review to [Biocompare.com](https://www.biocompare.com)

Submit a review of this product to [Biocompare.com](https://www.biocompare.com) to receive a \$20 Amazon.com giftcard! Your reviews help your fellow scientists make the right decisions. Thank you for your contribution.



Anti-Phospho GRF-1 (Tyr1105) Antibody

For Research Use Only. Not for use in diagnostic procedures.