

Anti-Phospho PFKFB2 (Ser483) Antibody

Catalog Number: P30440

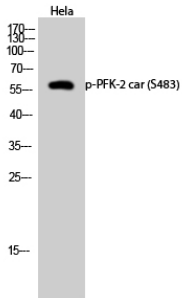
Overview

Product Name	Anti-Phospho PFKFB2 (Ser483) Antibody
Reactive Species	Human, Mouse, Rat
Description	Boster Bio Anti-Phospho PFKFB2 (Ser483) Antibody (Catalog# P30440). Tested in WB, IHC, ICC, IF, ELISA applications. This antibody reacts with Human, Mouse, Rat.
Application	ELISA, IF, IHC, ICC, WB
Clonality	Polyclonal
Formulation	PBS containing 50% glycerol, 0.5% stabilizing protein and 0.02% sodium azide. This antibody is supplied in a stabilized formulation. Compatibility with conjugation reactions depends on the chemistry of the conjugation method used. For conjugation methods that are not compatible with the stabilizing components present in this formulation, a carrier-free antibody format is required.
Storage Instructions	Store at -20°C for one year. For short-term storage and frequent use, store at 4°C for up to one month. Avoid repeated freeze-thaw cycles.
Host	Rabbit
Uniprot ID	O60825

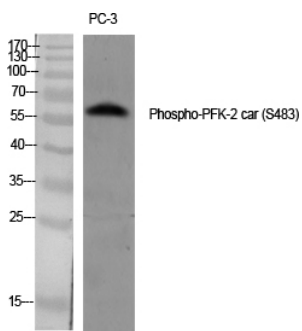
Technical Details

Immunogen	A peptide derived from human PFKFB2 around the phosphorylation site of Ser483. Immunogen sequence location: 451-500
Isotype	Rabbit IgG
Form	Liquid
Concentration	0.5-1mg/ml, actual concentration vary by lot. Use suggested dilution ratio to decide dilution procedure.
Purification	The antibody was purified from rabbit antiserum by affinity-chromatography using phospho peptide. The antibody against non-phospho peptide was removed by chromatography using corresponding non-phospho peptide.
Suggested Dilutions	WB 1:500 - 1:2000. IHC 1:100 - 1:300. ELISA: 1:40000. ICC/IF 1:50-200

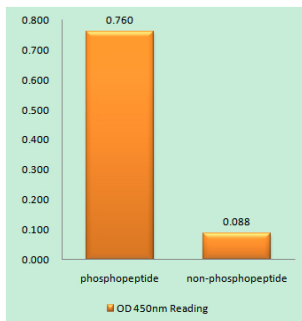
Anti-Phospho PFKFB2 (Ser483) Antibody (P30440) Images



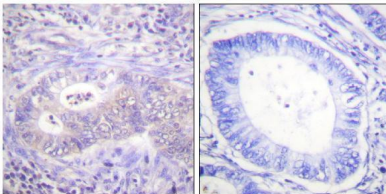
Western Blot analysis of HeLa cells using Phospho-PFK-2 car (S483) Polyclonal Antibody diluted at 1:1000



Western Blot analysis of various cells using Phospho-PFK-2 car (S483) Polyclonal Antibody diluted at 1:1000



Enzyme-Linked Immunosorbent Assay (Phospho-ELISA) for Immunogen Phosphopeptide (Phospho-left) and Non-Phosphopeptide (Phospho-right), using PFKFB2 (Phospho-Ser483) Antibody



Immunohistochemistry analysis of paraffin-embedded human colon carcinoma, using PFKFB2 (Phospho-Ser483) Antibody. The picture on the right is blocked with the phospho peptide.

Submit a product review to [Biocompare.com](https://www.biocompare.com)

Submit a review of this product to [Biocompare.com](https://www.biocompare.com) to receive a \$20 Amazon.com giftcard! Your reviews help your fellow scientists make the right decisions. Thank you for your contribution.



Anti-Phospho PFKFB2 (Ser483) Antibody

For Research Use Only. Not for use in diagnostic procedures.