

## Anti-Phospho B-RAF (Thr599) Antibody

Catalog Number: P30441

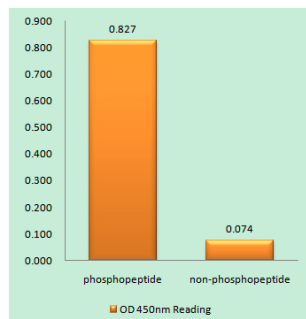
### Overview

|                      |   |
|----------------------|---|
| Product Name         | Anti-Phospho B-RAF (Thr599) Antibody  |
| Reactive Species     | Human, Mouse, Rat   |
| Description          | Boster Bio Anti-Phospho B-RAF (Thr599) Antibody (Catalog# P30441). Tested in WB, IHC, ICC, IF, ELISA applications. This antibody reacts with Human, Mouse, Rat.   |
| Application          | ELISA, IF, IHC, ICC, WB   |
| Clonality            | Polyclonal  |
| Formulation          | PBS containing 50% glycerol, 0.5% stabilizing protein and 0.02% sodium azide. This antibody is supplied in a stabilized formulation. Compatibility with conjugation reactions depends on the chemistry of the conjugation method used. For conjugation methods that are not compatible with the stabilizing components present in this formulation, a carrier-free antibody format is required. |
| Storage Instructions | Store at -20°C for one year. For short-term storage and frequent use, store at 4°C for up to one month. Avoid repeated freeze-thaw cycles.  |
| Host                 | Rabbit  |
| Uniprot ID           | P15056  |

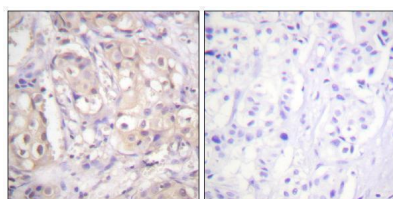
### Technical Details

|                     |   |
|---------------------|---|
| Immunogen           | A peptide derived from human B-RAF around the phosphorylation site of Thr599. Immunogen sequence location: 571-620  |
| Isotype             | Rabbit IgG  |
| Form                | Liquid  |
| Concentration       | 0.5-1mg/ml, actual concentration vary by lot. Use suggested dilution ratio to decide dilution procedure.  |
| Purification        | The antibody was purified from rabbit antiserum by affinity-chromatography using phospho peptide. The antibody against non-phospho peptide was removed by chromatography using corresponding non-phospho peptide. |
| Suggested Dilutions | WB 1:500-2000<br>IHC 1:100 - 1:300.<br>ELISA: 1:40000.<br>ICC/IF 1:50-200   |

## Anti-Phospho B-RAF (Thr599) Antibody (P30441) Images



Enzyme-Linked Immunosorbent Assay (Phospho-ELISA) for Immunogen Phosphopeptide (Phospho-left) and Non-Phosphopeptide (Phospho-right), using B-RAF (Phospho-Thr599) Antibody



Immunohistochemistry analysis of paraffin-embedded human breast carcinoma, using B-RAF (Phospho-Thr599) Antibody. The picture on the right is blocked with the phospho peptide.

## Submit a product review to Biocompare.com

Submit a review of this product to Biocompare.com to receive a \$20 Amazon.com giftcard! Your reviews help your fellow scientists make the right decisions. Thank you for your contribution.



Anti-Phospho B-RAF (Thr599) Antibody

For Research Use Only. Not for use in diagnostic procedures.