

Anti-Phospho Tensin-2 (Tyr483) Antibody

Catalog Number: P30917

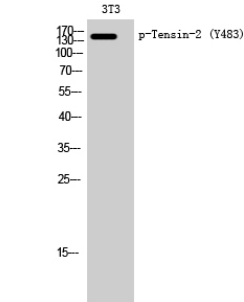
Overview

Product Name	Anti-Phospho Tensin-2 (Tyr483) Antibody
Reactive Species	Human, Mouse
Description	Boster Bio Anti-Phospho Tensin-2 (Tyr483) Antibody (Catalog# P30917). Tested in WB, ELISA applications. This antibody reacts with Human, Mouse.
Application	ELISA, WB
Clonality	Polyclonal
Formulation	PBS containing 50% glycerol, 0.5% stabilizing protein and 0.02% sodium azide. This antibody is supplied in a stabilized formulation. Compatibility with conjugation reactions depends on the chemistry of the conjugation method used. For conjugation methods that are not compatible with the stabilizing components present in this formulation, a carrier-free antibody format is required.
Storage Instructions	Store at -20°C for one year. For short-term storage and frequent use, store at 4°C for up to one month. Avoid repeated freeze-thaw cycles.
Host	Rabbit
Uniprot ID	Q63HR2

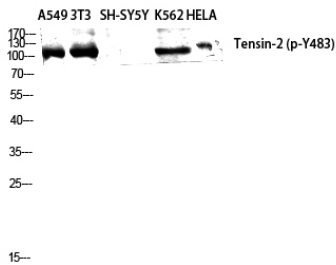
Technical Details

Immunogen	A phospho-peptide derived from human Tensin-2 around the phosphorylation site of Tyr483.
Isotype	Rabbit IgG
Form	Liquid
Concentration	0.5-1mg/ml, actual concentration vary by lot. Use suggested dilution ratio to decide dilution procedure.
Purification	The antibody was purified from rabbit antiserum by affinity-chromatography using phospho peptide. The antibody against non-phospho peptide was removed by chromatography using corresponding non-phospho peptide.
Suggested Dilutions	WB 1:500 - 1:2000. ELISA: 1:10000. Not yet tested in other applications.

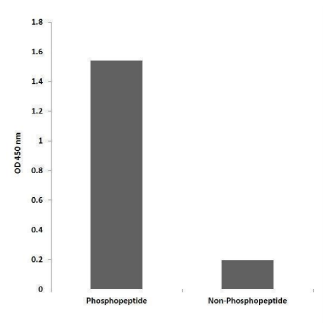
Anti-Phospho Tensin-2 (Tyr483) Antibody (P30917) Images



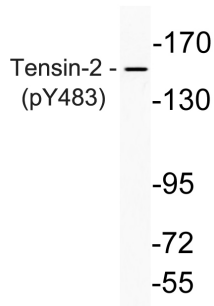
Western Blot analysis of 3T3 cells using Phospho-Tensin-2 (Y483) Polyclonal Antibody diluted at 1:2000



Western Blot analysis of A549 NIH-3T3 SH-SY5Y K562 HELA cells using Phospho-Tensin-2 (Y483) Polyclonal Antibody diluted at 1:2000



Enzyme-Linked Immunosorbent Assay (Phospho-ELISA) for Immunogen Phosphopeptide (Phospho-left) and Non-Phosphopeptide (Phospho-right), using Tensin-2 (Phospho-Tyr483) Antibody



Western blot analysis of lysate from K562 cells, using phospho-Tensin-2 (Phospho-Tyr483) antibody .

Submit a product review to [Biocompare.com](https://www.biocompare.com)

Submit a review of this product to [Biocompare.com](https://www.biocompare.com) to receive a \$20 Amazon.com giftcard! Your reviews help your fellow scientists make the right decisions. Thank you for your contribution.



Anti-Phospho Tensin-2 (Tyr483) Antibody

For Research Use Only. Not for use in diagnostic procedures.