

Anti-C Reactive Protein/CRP Antibody Picoband®

Catalog Number: PA1028

About CRP

C Reactive Protein (CRP) is a major acute phase reactant synthesized primarily in the liver hepatocytes. It is composed of 5 identical, 21,500-molecular weight subunits. CRP mediates activities associated with preimmune nonspecific host resistance. CRP shows the strongest association with cardiovascular events. It is detectable on the surface of about 4% of normal peripheral blood lymphocytes. Acute phase reactant CRP is produced in the liver.

Overview

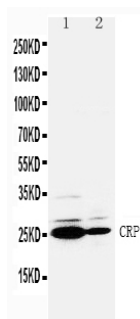
Product Name	Anti-C Reactive Protein/CRP Antibody Picoband®
Reactive Species	Human
Description	Boster Bio Anti-C Reactive Protein/CRP Antibody catalog # PA1028. Tested in WB applications. This antibody reacts with Human. The brand Picoband indicates this is a premium antibody that guarantees superior quality, high affinity, and strong signals with minimal background in Western blot applications. Only our best-performing antibodies are designated as Picoband, ensuring unmatched performance.
Application	WB
Clonality	Polyclonal
Formulation	Each vial contains antibody formulated with stabilizing components, 0.9mg NaCl, 0.2mg Na ₂ HPO ₄ , 0.05mg Thimerosal, 0.05mg NaN ₃ . *This antibody is supplied in a stabilized formulation. Compatibility with conjugation reactions depends on the chemistry of the conjugation method used. For conjugation methods that are not compatible with the stabilizing components present in this formulation, a carrier-free antibody format is required.
Storage Instructions	Store at -20°C for one year from date of receipt. After reconstitution, at 4°C for one month. It can also be aliquotted and stored frozen at -20°C for six months. Avoid repeated freeze-thaw cycles.
Host	Rabbit
Uniprot ID	P02741

Technical Details

Immunogen	A synthetic peptide corresponding to a sequence at the C-terminus of human C Reactive Protein.
Recommended Detection Systems	Boster recommends Enhanced Chemiluminescent Kit with anti-Rabbit IgG (EK1002) for Western blot.
Cross Reactivity	No cross-reactivity with other proteins
Isotype	Rabbit IgG

Form	Lyophilized
Concentration	Adding 0.2 ml of distilled water will yield a concentration of 500 ug/ml.
Purification	Immunogen affinity purified.
Suggested Dilutions	Western blot, 0.1-0.5ug/ml, Human

Anti-C Reactive Protein/CRP Antibody Picoband® (PA1028) Images



Anti-C Reactive Protein antibody, PA1028, Western blotting Lane 1: SMMC Cell Lysate Lane 2: HT1080 Cell Lysate

1 Publications Citing This Product

1. PubMed ID: 24137221, Shi L, Song J, Zhang X, Li Y, Li H. Exp Ther Med. 2013 Aug;6(2):532-536. Epub 2013 May 28. Correlation Between The Microinflammatory State And Left Ventricular Structural And Functional Changes In Maintenance Haemodialysis Patients.

Visit bosterbio.com/anti-c-reactive-protein-antibody-pa1028-boster.html to see all 1 publications.

Submit a product review to Biocompare.com

Submit a review of this product to Biocompare.com to receive a \$20 Amazon.com giftcard! Your reviews help your fellow scientists make the right decisions. Thank you for your contribution.



Anti-C Reactive Protein/CRP Antibody

For Research Use Only. Not for use in diagnostic procedures.