

## Anti-Secretogranin 3/SCG3 Antibody

Catalog Number: PA1071

### About SCG3

SCG3 (secretogranin III) is a member of the chromogranin/secretogranin family of neuroendocrine secretory proteins. Genetic variations in the SCG3 gene may influence the risk of obesity through possible regulation of hypothalamic neuropeptide secretion. SCG3 was the only gene within a haplotype block that contained rs3764220. SCG3 mRNA and immunoreactivity were detected in the paraventricular nucleus, lateral hypothalamic area, and arcuate nucleus, and the protein coexisted with orexin, melanin-concentrating hormone, neuropeptide Y, and proopiomelanocortin. SCG3 formed a granule-like structure together with these neuropeptides.

### Overview

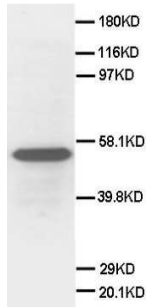
Product Name	Anti-Secretogranin 3/SCG3 Antibody
Reactive Species	Human, Mouse, Rat
Description	Boster Bio Anti-Secretogranin 3/SCG3 Antibody catalog # PA1071. Tested in IHC, ICC, WB applications. This antibody reacts with Human, Mouse, Rat.
Application	IHC, ICC, WB
Clonality	Polyclonal
Formulation	Each vial contains 5mg BSA, 0.9mg NaCl, 0.2mg Na <sub>2</sub> HPO <sub>4</sub> , 0.05mg Thimerosal, 0.05mg NaN <sub>3</sub> .
Storage Instructions	Store at -20°C for one year from date of receipt. After reconstitution, at 4°C for one month. It can also be aliquotted and stored frozen at -20°C for six months. Avoid repeated freeze-thaw cycles.
Host	Rabbit
Uniprot ID	Q8WXD2

### Technical Details

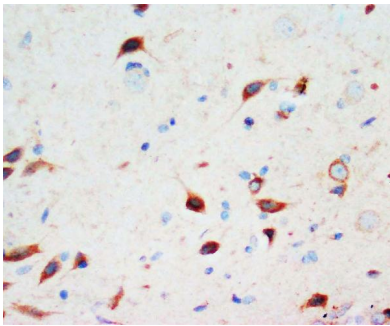
Immunogen	A synthetic peptide corresponding to a sequence at the C-terminus of human Secretogranin 3, different from the related mouse and rat sequences by one amino acid.
Predicted Reactive Species	Bovine
Recommended Detection Systems	Boster recommends Enhanced Chemiluminescent Kit with anti-Rabbit IgG (EK1002) for Western blot, and HRP Conjugated anti-Rabbit IgG Super Vision Assay Kit (SV0002-1) for IHC(P), IHC(F) and ICC.
Cross Reactivity	No cross-reactivity with other proteins
Isotype	Rabbit IgG
Form	Lyophilized

Concentration	Adding 0.2 ml of distilled water will yield a concentration of 500 ug/ml.
Purification	Immunogen affinity purified.
Suggested Dilutions	<p>Dilute the sample so that the expected range of concentrations fall within the detection range of this kit.</p> <p>If the expected range of concentration is unknown, a pilot test should be conducted to decide the optimal dilution ratio for your samples.</p> <p>Some PubMed article(s) citing the expression level of this target are as follows:</p> <p>Boster Bio's internal QC testing used:</p> <p>Immunocytochemistry , 0.5-1ug/ml, Human, -</p> <p>Immunohistochemistry (Frozen Section), 0.5-1ug/ml, Human, Rat, Mouse</p> <p>Immunohistochemistry (Paraffin-embedded Section), 0.5-1ug/ml, Human, Rat, Mouse, By Heat</p> <p>Western blot, 0.1-0.5ug/ml, Human, Rat, Mouse</p>

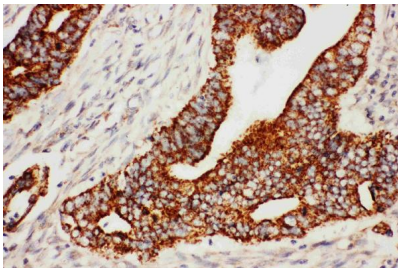
## Anti-Secretogranin 3/SCG3 Antibody (PA1071) Images



Anti-Secretogranin 3 antibody, PA1071, Western blotting  
WB: HELA Cell Lysate



Anti-Secretogranin 3 antibody, PA1071, IHC(P)  
IHC(P): Rat Brain Tissue



Anti-Secretogranin 3 antibody, PA1071, IHC(P)  
IHC(P): Human Rectal Cancer Tissue

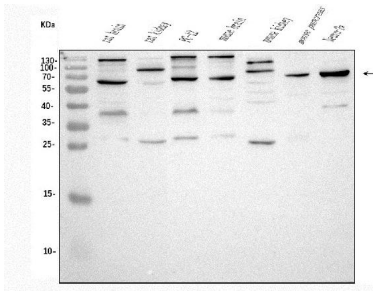


Figure 4. Western blot analysis of SCG3 using anti-SCG3 antibody (PA1071). Electrophoresis was performed on a 5-20% SDS-PAGE gel at 70V (Stacking gel) / 90V (Resolving gel) for 2-3 hours. The sample well of each lane was loaded with 50ug of sample under reducing conditions.  
Lane 1: Marker 1113,  
Lane 2: rat brain tissue lysates,  
Lane 3: rat kidney tissue lysates,  
Lane 4: rat PC-12 whole cell lysates.  
Lane 5: mouse brain tissue lysates,  
Lane 6: mouse kidney tissue lysates,  
Lane 7: mouse pancreas tissue lysates,  
Lane 8: mouse NEURO-2A whole cell lysates.  
After Electrophoresis, proteins were transferred to a Nitrocellulose membrane at 150mA for 50-90 minutes. Blocked the membrane with 5% Non-fat Milk/ TBS for 1.5 hour at RT. The membrane was incubated with rabbit anti-SCG3 antigen affinity purified polyclonal antibody (Catalog # PA1071) at 0.5 ug/mL overnight at 4°C, then washed with TBS-0.1%Tween 3 times with 5 minutes each and probed

with a goat anti-rabbit IgG-HRP secondary antibody at a dilution of 1:5000 for 1.5 hour at RT. The signal is developed using an Enhanced Chemiluminescent detection (ECL) kit (Catalog # EK1002) with Tanon 5200 system. A specific band was detected for SCG3 at approximately 62-65KD. The expected band size for SCG3 is at 53KD.

## Submit a product review to Biocompare.com

Submit a review of this product to Biocompare.com to receive a \$20 Amazon.com giftcard! Your reviews help your fellow scientists make the right decisions. Thank you for your contribution.



Anti-Secretogranin 3/SCG3 Antibody