

Anti-Metalloproteinase inhibitor 4 TIMP4 Antibody

Catalog Number: PA1078-1

About TIMP4

Metalloproteinase inhibitor 4 is an enzyme that in humans is encoded by the TIMP4 gene. And this gene is mapped to chromosome 3p25. This gene belongs to the TIMP gene family. The proteins encoded by this gene family are inhibitors of the matrix metalloproteinases, a group of peptidases involved in degradation of the extracellular matrix. The secreted, netrin domain-containing protein encoded by this gene is involved in regulation of platelet aggregation and recruitment and may play role in hormonal regulation and endometrial tissue remodeling.

Overview

Product Name	Anti-Metalloproteinase inhibitor 4 TIMP4 Antibody
Reactive Species	Human
Description	Boster Bio Anti-Metalloproteinase inhibitor 4 TIMP4 Antibody catalog # PA1078-1. Tested in ELISA, WB applications. This antibody reacts with Human.
Application	ELISA, WB
Clonality	Polyclonal
Formulation	Each vial contains 5mg BSA, 0.9mg NaCl, 0.2mg Na ₂ HPO ₄ , 0.05mg Thimerosal, 0.05mg NaN ₃ .
Storage Instructions	Store at -20°C for one year from date of receipt. After reconstitution, at 4°C for one month. It can also be aliquotted and stored frozen at -20°C for six months. Avoid repeated freeze-thaw cycles.
Host	Rabbit
Uniprot ID	Q99727

Technical Details

Immunogen	A synthetic peptide corresponding to a sequence at the C-terminus of human TIMP4.
Recommended Detection Systems	Boster recommends Enhanced Chemiluminescent Kit with anti-Rabbit IgG (EK1002) for Western blot.
Cross Reactivity	No cross-reactivity with other proteins
Isotype	Rabbit IgG
Form	Lyophilized
Concentration	Adding 0.2 ml of distilled water will yield a concentration of 500 ug/ml.
Purification	Immunogen affinity purified.
Suggested Dilutions	Dilute the sample so that the expected range of concentrations fall within the detection range of this

kit.

If the expected range of concentration is unknown, a pilot test should be conducted to decide the optimal dilution ratio for your samples.

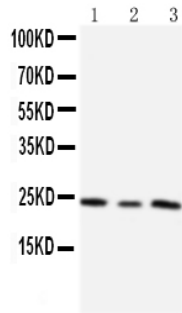
Some PubMed article(s) citing the expression level of this target are as follows:

Boster Bio's internal QC testing used:

Western blot, 0.1-0.5ug/ml, Human, -

ELISA, 0.1-0.5ug/ml, Human

Anti-Metalloproteinase inhibitor 4 TIMP4 Antibody (PA1078-1) Images



Anti-TIMP4 antibody, PA1078-1, Western blotting
Lane 1: HT1080 Cell Lysate
Lane 2: HELA Cell Lysate
Lane 3: SMMC Cell Lysate

Submit a product review to Biocompare.com

Submit a review of this product to Biocompare.com to receive a \$20 Amazon.com giftcard! Your reviews help your fellow scientists make the right decisions. Thank you for your contribution.



Anti-Metalloproteinase inhibitor 4 TIMP4 Antibody