

Anti-SKP2 Antibody Picoband®

Catalog Number: PA1102

About SKP2

The F box protein Skp2 (S-phase kinase-associated protein 2) is oncogenic, and its frequent amplification and overexpression correlate with the grade of malignancy of certain tumors. Skp2 controls p300-p53 signaling pathways in cancer cells, making it a potential molecular target for cancer therapy. This gene positively regulates the G (1)-S transition by controlling the stability of several G (1) regulators, such as the cell cycle inhibitor p27. This study provides evidence of a role for an F-box protein in oncogenesis and establishes SKP2 as a protooncogene causally involved in the pathogenesis of lymphomas.

Overview

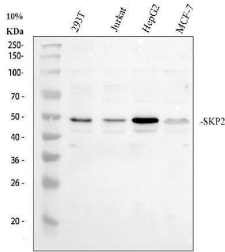
Product Name	Anti-SKP2 Antibody Picoband®
Reactive Species	Human
Description	Boster Bio Anti-SKP2 Antibody catalog # PA1102. Tested in Flow Cytometry, ICC/IF, WB applications. This antibody reacts with Human. The brand Picoband indicates this is a premium antibody that guarantees superior quality, high affinity, and strong signals with minimal background in Western blot applications. Only our best-performing antibodies are designated as Picoband, ensuring unmatched performance.
Application	Flow Cytometry, IF, ICC, WB
Clonality	Polyclonal
Formulation	Each vial contains 4 mg Trehalose, 0.9 mg NaCl and 0.2 mg Na ₂ HPO ₄ .
Storage Instructions	Store at -20°C for one year from date of receipt. After reconstitution, at 4°C for one month. It can also be aliquotted and stored frozen at -20°C for six months. Avoid repeated freeze-thaw cycles.
Host	Rabbit
Uniprot ID	Q13309

Technical Details

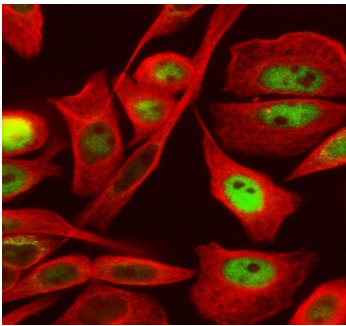
Immunogen	A synthetic peptide corresponding to a sequence at the N-terminus of human SKP2, different from the related rat and mouse sequences by three amino acids.
Recommended Detection Systems	Boster recommends Enhanced Chemiluminescent Kit with anti-Rabbit IgG (EK1002) for Western blot, and HRP Conjugated anti-Rabbit IgG Super Vision Assay Kit (SV0002-1) for IHC(P).
Cross Reactivity	No cross-reactivity with other proteins
Isotype	Rabbit IgG
Form	Lyophilized

Concentration	Adding 0.2 ml of distilled water will yield a concentration of 500 ug/ml.
Purification	Immunogen affinity purified.
Suggested Dilutions	Western blot, 0.1-0.5ug/ml, Human Immunocytochemistry/Immunofluorescence, 5 ug/ml, Human Flow Cytometry(Fixed), 1-3 ug/1x10 ⁶ cells, Human

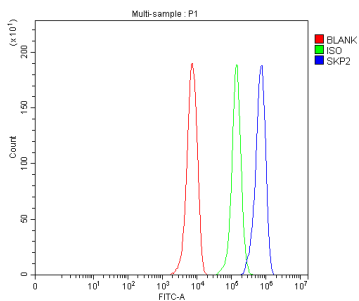
Anti-SKP2 Antibody Picoband® (PA1102) Images



Western blot analysis of SKP2 using anti-SKP2 antibody (PA1102). Electrophoresis was performed on a 10% SDS-PAGE gel at 80V (Stacking gel) / 120V (Resolving gel) for 2 hours. The sample well of each lane was loaded with 30 ug of sample under reducing conditions. Lane 1: human 293T whole cell lysates, Lane 2: human Jurkat whole cell lysates, Lane 3: human HepG2 whole cell lysates, Lane 4: human MCF-7 whole cell lysates. After electrophoresis, proteins were transferred to a nitrocellulose membrane at 150 mA for 50-90 minutes. Blocked the membrane with 5% non-fat milk/TBS for 1.5 hour at RT. The membrane was incubated with rabbit anti-SKP2 antigen affinity purified polyclonal antibody (PA1102) at 0.5 ug/mL overnight at 4°C, then washed with TBS-0.1%Tween 3 times with 5 minutes each and probed with a goat anti-rabbit IgG-HRP secondary antibody (Catalog # BA1054) at a dilution of 1:5000 for 1.5 hour at RT. The signal is developed using an ECL Plus Western Blotting Substrate (Catalog # AR1196-200) with Tanon 5200 system. A specific band was detected for SKP2 at approximately 48 kDa. The expected band size for SKP2 is at 48 kDa.



IF analysis of SKP2 using anti-SKP2 antibody (PA1102) and anti-Tubulin Alpha antibody (M03989-3). SKP2 was detected in immunocytochemical section of SiHa cell. Enzyme antigen retrieval was performed using IHC enzyme antigen retrieval reagent (AR0022) for 15 mins. The cells were blocked with 10% goat serum. And then incubated with 5 ug/mL rabbit anti-SKP2 Antibody (PA1102) and mouse anti-Tubulin Alpha antibody (M03989-3) overnight at 4°C. DyLight®488 Conjugated Goat Anti-Rabbit IgG (BA1127) and Cy3 Conjugated Goat Anti-Mouse IgG (BA1031) were used as secondary antibody at 1:500 dilution and incubated for 30 minutes at 37°C. Visualize using a fluorescence microscope and filter sets appropriate for the label used.



Flow Cytometry analysis of HepG2 cells using anti-SKP2 antibody (PA1102). Overlay histogram showing HepG2 cells stained with PA1102 (Blue line). To facilitate intracellular staining, cells were fixed with 4% paraformaldehyde and permeabilized with permeabilization buffer. The cells were blocked with 10% normal goat serum. And then incubated with rabbit anti-SKP2 Antibody (PA1102, 1 ug/1x10⁶ cells) for 30 min at 20°C. DyLight®488 conjugated goat anti-rabbit IgG (BA1127, 5-10 ug/1x10⁶ cells) was used as secondary antibody for 30 minutes at 20°C. Isotype control antibody (Green line) was rabbit IgG (1 ug/1x10⁶) used under the same conditions. Unlabelled sample without incubation with primary antibody and secondary antibody (Red line) was used as a blank control.

1. PubMed ID: 24265759, Chen Xm, Bai Y, Zhong Yj, Xie Xi, Long Hw, Yang Yy, Wu Sg, Jia Q, Wang Xh. Plos One. 2013 Nov 12;8(11):E79201. Doi: 10.1371/Journal.Pone.0079201. Ecollection 2013. Wogonin Has Multiple Anti-Cancer Effects By Regulating C-Myc/Skp2/Fbw7?? And Hdac1/...

2. PubMed ID: 23727062, Qiu J, Zhang C, Lv Y, Zhang Y, Zhu C, Wang X, Yao W. Neurochem Int. 2013 Aug;63(2):87-92. Doi: 10.1016/J.Neuint.2013.05.009. Epub 2013 May 28. Cdh1 Inhibits Reactive Astrocyte Proliferation After Oxygen-Glucose Deprivation And Reperfusion.

3. PubMed ID: 25333250, Chen Xm, Xie Xb, Zhao Q, Wang F, Bai Y, Yin Jq, Jiang H, Xie Xi, Jia Q, Huang G. Mol Med Rep. 2015 Jan;11(1):105-12. Doi: 10.3892/Mmr.2014.2733. Epub 2014 Oct 21. Ampelopsin Induces Apoptosis By Regulating Multiple C-Myc/S-Phase Kinase-Associated ...

Visit bosterbio.com/anti-skp2-antibody-pa1102-boster.html to see all 7 publications.

Submit a product review to Biocompare.com

Submit a review of this product to Biocompare.com to receive a \$20 Amazon.com giftcard! Your reviews help your fellow scientists make the right decisions. Thank you for your contribution.



Anti-SKP2 Antibody

For Research Use Only. Not for use in diagnostic procedures.