

Anti-IFITM1 Antibody Picoband®

Catalog Number: PA1112

About IFITM1

Interferon-induced Transmembrane Protein 1 (IFITM1), also called Interferon-induced Protein 17 (IFI17). IFITM1 activity is required for primordial germ cells (PGCs) transit from the mesoderm into the endoderm, and that it appears to act via a repulsive mechanism, such that PGCs avoid Ifitm1-expressing tissues. It is mapped to Chr.11 and belongs to the family of interferon-induced transmembrane proteins (Ifitm/mil/fragilis), which encodes cell surface proteins that may modulate cell adhesion and influence cell differentiation. Interferon-inducible membrane proteins of approximately 17 kDa have been suggested to play a role in the antiproliferative activity of interferons based on their pattern of induction in interferon-sensitive and -resistant cell lines and the ability of a membrane fraction enriched in 17-kDa proteins to inhibit cell growth.

Overview

Product Name	Anti-IFITM1 Antibody Picoband®
Reactive Species	Human
Description	Boster Bio Anti-IFITM1 Antibody catalog # PA1112. Tested in IHC, WB applications. This antibody reacts with Human. The brand Picoband indicates this is a premium antibody that guarantees superior quality, high affinity, and strong signals with minimal background in Western blot applications. Only our best-performing antibodies are designated as Picoband, ensuring unmatched performance.
Application	IHC, WB
Clonality	Polyclonal
Formulation	Each vial contains antibody formulated with stabilizing components, 0.9mg NaCl, 0.2mg Na ₂ HPO ₄ , 0.05mg Thimerosal, 0.05mg NaN ₃ . *This antibody is supplied in a stabilized formulation. Compatibility with conjugation reactions depends on the chemistry of the conjugation method used. For conjugation methods that are not compatible with the stabilizing components present in this formulation, a carrier-free antibody format is required.
Storage Instructions	Store at -20°C for one year from date of receipt. After reconstitution, at 4°C for one month. It can also be aliquotted and stored frozen at -20°C for six months. Avoid repeated freeze-thaw cycles.
Host	Rabbit
Uniprot ID	P13164

Technical Details

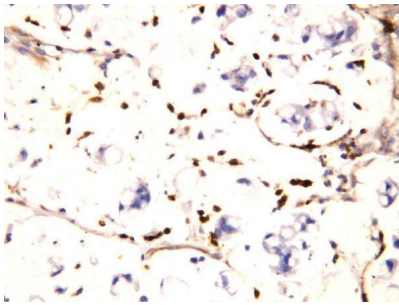
Immunogen	A synthetic peptide corresponding to a sequence at the N-terminus of human IFITM1.
Recommended Detection Systems	Boster recommends Enhanced Chemiluminescent Kit with anti-Rabbit IgG (EK1002) for Western blot, and HRP Conjugated anti-Rabbit IgG Super Vision Assay Kit (SV0002-1) for IHC(P) and IHC(F).

Cross Reactivity	No cross-reactivity with other proteins
Isotype	Rabbit IgG
Form	Lyophilized
Concentration	Adding 0.2 ml of distilled water will yield a concentration of 500 ug/ml.
Purification	Immunogen affinity purified.
Suggested Dilutions	Immunohistochemistry (Frozen Section), 0.5-1ug/ml, Human, - Immunohistochemistry (Paraffin-embedded Section), 0.5-1ug/ml, Human Western blot, 0.1-0.5ug/ml, Human

Anti-IFITM1 Antibody Picoband® (PA1112) Images



Anti-IFITM1 antibody, PA1112, Western blotting Lane 1:
SW620 Cell Lysate Lane 2: CEM Cell Lysate



Anti-IFITM1 antibody, PA1112, IHC(P) IHC(P): Human
Intestinal Cancer Tissue

3 Publications Citing This Product

1. PubMed ID: 20428811, Ma Y, Zhang G, Fu X, Xia O, Zhan C, Li L, Wang Z, Wu B. *Oncol Rep.* 2010 Jun;23(6):1569-76. Wnt Signaling May Be Activated In A Subset Of Peutz-Jeghers Syndrome Polyps Closely Correlating To Lkb1 Expression.
2. PubMed ID: 19499152, Xu Y, Yang G, Hu G. *Acta Biochim Biophys Sin (Shanghai).* 2009 Jun;41(6):488-94. Binding Of Ifitm1 Enhances The Inhibiting Effect Of Caveolin-1 On Erk Activation.
3. PubMed ID: 16847454, Yang G, Xu Y, Chen X, Hu G. *Oncogene.* 2007 Jan 25;26(4):594-603. Epub 2006 Jul 17. Ifitm1 Plays An Essential Role In The Antiproliferative Action Of Interferon-Gamma.

Visit bosterbio.com/anti-ifitm1-antibody-pa1112-boster.html to see all 3 publications.

Submit a product review to Biocompare.com

Submit a review of this product to Biocompare.com to receive a \$20 Amazon.com giftcard! Your reviews help your fellow scientists make the right decisions. Thank you for your contribution.



Anti-IFITM1 Antibody

For Research Use Only. Not for use in diagnostic procedures.