

## Anti-Estrogen Receptor beta/ESR2 Antibody

Catalog Number: PA1126

### About ESR2

Estrogen receptor-beta (ESR2) is a member of the superfamily of nuclear receptors, which can transduce extracellular signals into transcriptional responses. The gene product contains an N-terminal DNA binding domain and C-terminal ligand binding domain and is localized to the nucleus, cytoplasm, and mitochondria. Upon binding to 17beta-estradiol or related ligands, the encoded protein forms homo- or hetero-dimers that interact with specific DNA sequences to activate transcription. Some isoforms dominantly inhibit the activity of other estrogen receptor family members. Several alternatively spliced transcript variants of this gene have been described, but the full-length nature of some of these variants has not been fully characterized.

### Overview

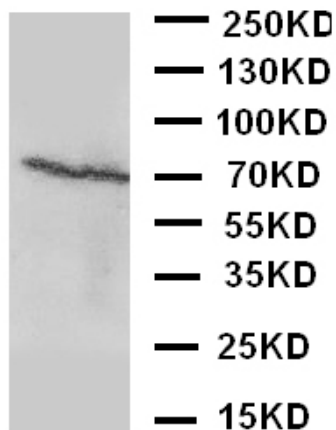
Product Name	Anti-Estrogen Receptor beta/ESR2 Antibody
Reactive Species	Human
Description	Rabbit IgG polyclonal antibody for Estrogen receptor beta(ESR2) detection. Tested with WB in Human.
Application	WB
Clonality	Polyclonal
Formulation	Each vial contains 5mg BSA, 0.9mg NaCl, 0.2mg Na2HPO4, 0.05mg Thimerosal, 0.05mg NaN3.
Storage Instructions	At -20°C for one year. After reconstitution, at 4°C for one month. It can also be aliquotted and stored frozen at -20°C for a longer time. Avoid repeated freezing and thawing.
Host	Rabbit
Uniprot ID	Q92731

### Technical Details

Immunogen	A synthetic peptide corresponding to a sequence at the N-terminus of human Estrogen Receptor beta(27-50aa HGSYIPSSYVDSHHEYPAMTFYS), different from the
-----------	--------------------------------------------------------------------------------------------------------------------------------------------------------

	related rat and mouse sequences by four amino acids.
Recommended Detection Systems	Boster recommends Enhanced Chemiluminescent Kit with anti-Rabbit IgG (EK1002) for Western blot.
Cross Reactivity	No cross reactivity with other proteins
Isotype	N/A
Form	Lyophilized
Concentration	Add 0.2ml of distilled water will yield a concentration of 500ug/ml.
Purification	Immunogen affinity purified.
Suggested Dilutions	Western blot, 0.1-0.5µg/ml, Human
	For protocols please visit <a href="https://www.bosterbio.com/protocol-and-troubleshooting/">https://www.bosterbio.com/protocol-and-troubleshooting/</a>

## Anti-Estrogen Receptor beta/ESR2 Antibody (PA1126) Images



Anti-Estrogen Receptor beta antibody, PA1126, Western blotting  
WB: MCF-7 Cell Lysate

## Submit a product review to Biocompare.com

Submit a review of this product to Biocompare.com to receive a \$20 Amazon giftcard! Your reviews help your fellow scientists make the right decisions. Thank you for your contribution.

