

Anti-CCR6/CCR6 Antibody Picoband®

Catalog Number: PA1201

About CCR6

CCR6, also termed CKRL3, encodes a 369-amino acid polypeptide with greatest similarity to the family of alpha-chemokine-binding receptors. Unlike most chemokine receptor genes, it is encoded by more than 1 exon. Weakly expressed as a 4-kb transcript in spleen, lymph nodes, peripheral blood lymphocytes and appendix, CCR6 gene is located at 6q27. As the receptor for MIP-3-alpha, its activation leads to phospholipase C-dependent intracellular Ca (2+) mobilization. Additionally, CCR6 are markedly upregulated in psoriasis.

Overview

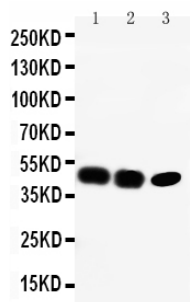
Product Name	Anti-CCR6/CCR6 Antibody Picoband®
Reactive Species	Human, Mouse, Rat
Description	Boster Bio Anti-CCR6/CCR6 Antibody catalog # PA1201. Tested in WB applications. This antibody reacts with Human, Mouse, Rat. The brand Picoband indicates this is a premium antibody that guarantees superior quality, high affinity, and strong signals with minimal background in Western blot applications. Only our best-performing antibodies are designated as Picoband, ensuring unmatched performance.
Application	WB
Clonality	Polyclonal
Formulation	Each vial contains 4mg Trehalose, 0.9mg NaCl, 0.2mg Na2HPO4, 0.05mg NaN3.
Storage Instructions	Store at -20°C for one year from date of receipt. After reconstitution, at 4°C for one month. It can also be aliquotted and stored frozen at -20°C for six months. Avoid repeated freeze-thaw cycles.
Host	Rabbit
Uniprot ID	P51684

Technical Details

Immunogen	A synthetic peptide corresponding to a sequence at the C-terminus of human CCR6, different from the related rat and mouse sequences by two amino acids.
Recommended Detection Systems	Boster recommends Enhanced Chemiluminescent Kit with anti-Rabbit IgG (EK1002) for Western blot.
Cross Reactivity	No cross-reactivity with other proteins
Isotype	Rabbit IgG
Form	Lyophilized
Concentration	Adding 0.2 ml of distilled water will yield a concentration of 500 ug/ml.

Purification	Immunogen affinity purified.
Suggested Dilutions	Western blot, 0.1-0.5ug/ml, Human, Rat, Mouse

Anti-CCR6/CCR6 Antibody Picoband® (PA1201) Images



Anti-CCR6 antibody, PA1201, Western blotting
Lane 1: Rat Liver Tissue Lysate
Lane 2: SW620 Cell Lysate
Lane 3: CEM Cell Lysate

Submit a product review to Biocompare.com

Submit a review of this product to Biocompare.com to receive a \$20 Amazon.com giftcard! Your reviews help your fellow scientists make the right decisions. Thank you for your contribution.



Anti-CCR6/CCR6 Antibody

For Research Use Only. Not for use in diagnostic procedures.