

Anti-MRGX1/MRGPRX1 Antibody

Catalog Number: PA1208

About Mrgprx1

MAS-related G-protein coupled receptor, member C, also known as MRGPC or MRGPRX1, is a human gene. The Mas-related genes (Mrgs) comprise a family of >50 G protein-coupled receptors (GPCRs), many of which are expressed in specific subsets of nociceptive sensory neurons in mice. In contrast, humans contain a related but nonorthologous family of genes, called MrgXs or sensory neuron-specific receptors, of which many fewer appear to be expressed in sensory neurons.

Overview

Product Name	Anti-MRGX1/MRGPRX1 Antibody
Reactive Species	Rat
Description	Boster Bio Anti-MRGX1/MRGPRX1 Antibody catalog # PA1208. Tested in IHC, WB applications. This antibody reacts with Rat.
Application	IHC, WB
Clonality	Polyclonal
Formulation	Each vial contains 5mg BSA, 0.9mg NaCl, 0.2mg Na ₂ HPO ₄ , 0.05mg Thimerosal, 0.05mg NaN ₃ .
Storage Instructions	Store at -20°C for one year from date of receipt. After reconstitution, at 4°C for one month. It can also be aliquotted and stored frozen at -20°C for six months. Avoid repeated freeze-thaw cycles.
Host	Rabbit
Uniprot ID	Q8R4G1

Technical Details

Immunogen	A synthetic peptide corresponding to a sequence at the N-terminus of rat MRGX1.
Predicted Reactive Species	Bovine
Recommended Detection Systems	Boster recommends Enhanced Chemiluminescent Kit with anti-Mouse IgG (EK1001) for Western blot, and HRP Conjugated anti-Mouse IgG Super Vision Assay Kit (SV0001-1) for IHC(P).
Cross Reactivity	No cross-reactivity with other proteins
Isotype	Rabbit IgG
Form	Lyophilized
Concentration	Adding 0.2 ml of distilled water will yield a concentration of 500 ug/ml.
Purification	Immunogen affinity purified.

Suggested Dilutions

Dilute the sample so that the expected range of concentrations fall within the detection range of this kit.

If the expected range of concentration is unknown, a pilot test should be conducted to decide the optimal dilution ratio for your samples.

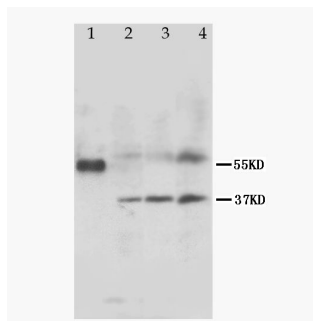
Some PubMed article(s) citing the expression level of this target are as follows:

Boster Bio's internal QC testing used:

Immunohistochemistry (Paraffin-embedded Section), 0.5-1ug/ml, Rat, By Heat

Western blot, 0.1-0.5ug/ml, Rat

Anti-MRGX1/MRGPRX1 Antibody (PA1208) Images



Anti-MRGX1 antibody, PA1208, Western blotting

Lane 1: Marker

Lane 2: Rat Heart Tissue Lysate

Lane 3: Rat Skeletal Muscle Tissue Lysate

Lane 4: MCF-7 Cell Lysate

Submit a product review to Biocompare.com

Submit a review of this product to Biocompare.com to receive a \$20 Amazon.com giftcard! Your reviews help your fellow scientists make the right decisions. Thank you for your contribution.



Anti-MRGX1/MRGPRX1 Antibody