

Anti-Notch1 Antibody Picoband®

Catalog Number: PA1215

About NOTCH1

Notch proteins are single-pass transmembrane receptors that regulate cell fate decisions during development. The Notch family includes 4 receptors, NOTCH1, NOTCH2, NOTCH3, and NOTCH4, whose ligands include JAG1, JAG2, DLL1), DLL3, and DLL4. Notch homolog 1, translocation-associated (NOTCH1), is a human gene encoding a single-pass transmembrane receptor. It functions as a receptor for membrane bound ligands, and may play multiple roles during development. NOTCH1 may normally coordinates the process of somitogenesis, and the activated Notch 1 and Notch 3 promote differentiation of progenitor cells into astroglia.

Overview

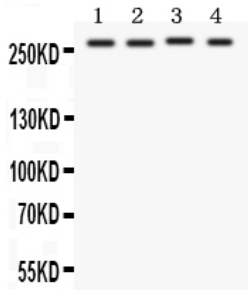
Product Name	Anti-Notch1 Antibody Picoband®
Reactive Species	Human
Description	Boster Bio Anti-Notch1 Antibody catalog # PA1215. Tested in WB applications. This antibody reacts with Human. The brand Picoband indicates this is a premium antibody that guarantees superior quality, high affinity, and strong signals with minimal background in Western blot applications. Only our best-performing antibodies are designated as Picoband, ensuring unmatched performance.
Application	WB
Clonality	Polyclonal
Formulation	Each vial contains antibody formulated with stabilizing components, 0.9mg NaCl, 0.2mg Na ₂ HPO ₄ , 0.05mg Thimerosal, 0.05mg NaN ₃ . *This antibody is supplied in a stabilized formulation. Compatibility with conjugation reactions depends on the chemistry of the conjugation method used. For conjugation methods that are not compatible with the stabilizing components present in this formulation, a carrier-free antibody format is required.
Storage Instructions	Store at -20°C for one year from date of receipt. After reconstitution, at 4°C for one month. It can also be aliquotted and stored frozen at -20°C for six months. Avoid repeated freeze-thaw cycles.
Host	Rabbit
Uniprot ID	P46531

Technical Details

Immunogen	A synthetic peptide corresponding to a sequence in the middle region of human Notch1.
Recommended Detection Systems	Boster recommends Enhanced Chemiluminescent Kit with anti-Rabbit IgG (EK1002) for Western blot.
Cross Reactivity	No cross-reactivity with other proteins
Isotype	Rabbit IgG

Form	Lyophilized
Concentration	Adding 0.2 ml of distilled water will yield a concentration of 500 ug/ml.
Purification	Immunogen affinity purified.
Suggested Dilutions	Western blot, 0.1-0.5ug/ml, Human

Anti-Notch1 Antibody Picoband® (PA1215) Images



Anti-Notch1 antibody, PA1215, Western blotting All lanes:
Anti Notch1 (PA1215) at 0.5ug/ml Lane 1: MCF-7 Whole Cell
Lysate at 40ug Lane 2: HELA Whole Cell Lysate at 40ug Lane
3: JURKAT Whole Cell Lysate at 40ug Lane 4: COLO320 Whole
Cell Lysate at 40ug Predicted bind size: 272KD Observed bind
size: 272KD

1 Publications Citing This Product

1. PubMed ID: 25536154, Mi L, Chen Y, Zheng X, Li Y, Zhang Q, Mo D, Yang G. J Cell Biochem. 2015 Jul;116(7):1195-204. Doi: 10.1002/Jcb.25065. Microrna-139-5P Suppresses 3T3-L1 Preadipocyte Differentiation Through Notch And Irs1/Pi3K/Akt Insulin Signaling Pathways.

Visit bosterbio.com/anti-notch1-antibody-pa1215-boster.html to see all 1 publications.

Submit a product review to Biocompare.com

Submit a review of this product to Biocompare.com to receive a \$20 Amazon.com giftcard! Your reviews help your fellow scientists make the right decisions. Thank you for your contribution.



Anti-Notch1 Antibody

For Research Use Only. Not for use in diagnostic procedures.