

Anti-Bcl-XS/BCL2L1 Antibody Picoband®

Catalog Number: PA1232

About BCL2L1

Bcl-xS is the second mRNA species of Bcl-x protein, which encodes a protein that inhibits the ability of bcl-2 to enhance the survival of growth factor-deprived cells. In vivo, bcl-xS mRNA is expressed at high levels in cells that undergo a high rate of turnover, such as developing lymphocytes. Apoptosis was associated with increased protein expression of Bcl-X/S, an early marker of apoptosis, and release of cytochrome c into the cytosol of infected HB cells.

Overview

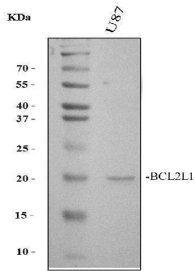
Product Name	Anti-Bcl-XS/BCL2L1 Antibody Picoband®
Reactive Species	Human, Mouse, Rat
Description	Boster Bio Anti-Bcl-XS/BCL2L1 Antibody catalog # PA1232. Tested in IHC, WB applications. This antibody reacts with Human, Mouse, Rat. The brand Picoband indicates this is a premium antibody that guarantees superior quality, high affinity, and strong signals with minimal background in Western blot applications. Only our best-performing antibodies are designated as Picoband, ensuring unmatched performance.
Application	IHC, WB
Clonality	Polyclonal
Formulation	Each vial contains antibody formulated with stabilizing components, 0.9mg NaCl, 0.2mg Na ₂ HPO ₄ , 0.05mg Thimerosal, 0.05mg NaN ₃ . *This antibody is supplied in a stabilized formulation. Compatibility with conjugation reactions depends on the chemistry of the conjugation method used. For conjugation methods that are not compatible with the stabilizing components present in this formulation, a carrier-free antibody format is required.
Storage Instructions	Store at -20°C for one year from date of receipt. After reconstitution, at 4°C for one month. It can also be aliquotted and stored frozen at -20°C for six months. Avoid repeated freeze-thaw cycles.
Host	Rabbit
Uniprot ID	Q07817

Technical Details

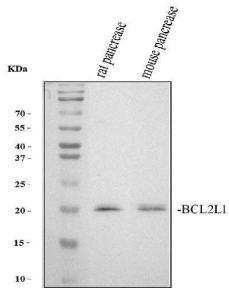
Immunogen	A synthetic peptide corresponding to a sequence in the middle region of human Bcl-XS, different from the related rat and mouse sequences by one amino acid.
Recommended Detection Systems	Boster recommends Enhanced Chemiluminescent Kit with anti-Rabbit IgG (EK1002) for Western blot, and HRP Conjugated anti-Rabbit IgG Super Vision Assay Kit (SV0002-1) for IHC(P).
Cross Reactivity	No cross-reactivity with other proteins

Isotype	Rabbit IgG
Form	Lyophilized
Concentration	Adding 0.2 ml of distilled water will yield a concentration of 500 ug/ml.
Purification	Immunogen affinity purified.
Suggested Dilutions	Western blot, 0.1-0.5ug/ml, Human, Mouse, Rat Immunohistochemistry (Paraffin-embedded Section), 0.5-1ug/ml, Human

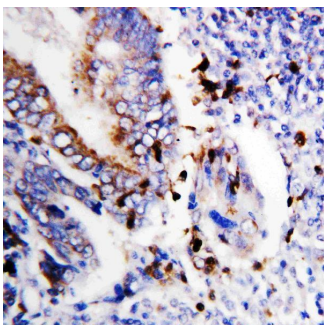
Anti-Bcl-XS/BCL2L1 Antibody Picoband® (PA1232) Images



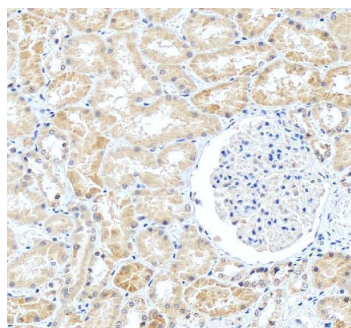
Western blot analysis of Bcl-XS/BCL2L1 using anti-Bcl-XS/BCL2L1 antibody (PA1232). Electrophoresis was performed on a 12% SDS-PAGE gel at 80V (Stacking gel) / 120V (Resolving gel) for 2 hours. The sample well of each lane was loaded with 30 ug of sample under reducing conditions. Lane 1: human U87 whole cell lysates. After electrophoresis, proteins were transferred to a nitrocellulose membrane at 150 mA for 50-90 minutes. Blocked the membrane with 5% non-fat milk/TBS for 1.5 hour at RT. The membrane was incubated with rabbit anti-Bcl-XS/BCL2L1 antigen affinity purified polyclonal antibody (PA1232) at 0.5 ug/mL overnight at 4°C, then washed with TBS-0.1%Tween 3 times with 5 minutes each and probed with a goat anti-rabbit IgG-HRP secondary antibody (Catalog # BA1054) at a dilution of 1:5000 for 1.5 hour at RT. The signal is developed using an ECL Plus Western Blotting Substrate (Catalog # AR1196-200) with Tanon 5200 system. A specific band was detected for Bcl-XS/BCL2L1 at approximately 18-20 kDa. The expected band size for Bcl-XS/BCL2L1 is at 18 kDa.



Western blot analysis of Bcl-XS/BCL2L1 using anti-Bcl-XS/BCL2L1 antibody (PA1232). Electrophoresis was performed on a 12% SDS-PAGE gel at 80V (Stacking gel) / 120V (Resolving gel) for 2 hours. The sample well of each lane was loaded with 30 ug of sample under reducing conditions. Lane 1: rat pancrease tissue lysates, Lane 2: mouse pancrease tissue lysates. After electrophoresis, proteins were transferred to a nitrocellulose membrane at 150 mA for 50-90 minutes. Blocked the membrane with 5% non-fat milk/TBS for 1.5 hour at RT. The membrane was incubated with rabbit anti-Bcl-XS/BCL2L1 antigen affinity purified polyclonal antibody (PA1232) at 0.5 ug/mL overnight at 4°C, then washed with TBS-0.1%Tween 3 times with 5 minutes each and probed with a goat anti-rabbit IgG-HRP secondary antibody (Catalog # BA1054) at a dilution of 1:5000 for 1.5 hour at RT. The signal is developed using an ECL Plus Western Blotting Substrate (Catalog # AR1196-200) with Tanon 5200 system. A specific band was detected for Bcl-XS/BCL2L1 at approximately 18-20 kDa. The expected band size for Bcl-XS/BCL2L1 is at 18 kDa.



Anti-Bcl-XS antibody, PA1232, IHC(P)IHC(P): Human Colon Cancer Tissue



IHC analysis of Bcl-XS/BCL2L1 using anti-Bcl-XS/BCL2L1 antibody (PA1232). Bcl-XS/BCL2L1 was detected in a paraffin-embedded section of human kidney tissue. Heat mediated antigen retrieval was performed in EDTA buffer (pH 8.0, epitope retrieval solution). The tissue section was blocked with 10% goat serum. The tissue section was then incubated with 2 ug/ml rabbit anti-Bcl-XS/BCL2L1 Antibody (PA1232) overnight at 4°C. Peroxidase Conjugated Goat Anti-rabbit IgG was used as secondary antibody and incubated for 30 minutes at 37°C. The tissue section was developed using HRP Conjugated Rabbit IgG Super Vision Assay Kit (Catalog # SV0002) with DAB as the chromogen.

10 Publications Citing This Product

1. PubMed ID: 10.3390/i7020059, Downregulation of the Expression of GLUT1 Plays a Role in Apoptosis Induced by Sodium Butyrate in HT-29 Cell Line
2. PubMed ID: 10.1016/j.transproceed.2006.06.007, Conversion From Cyclosporine to Mycophenolate Mofetil Improves Expression of A20 in the Rat Kidney Allografts Undergoing Chronic Rejection
3. PubMed ID: 10.1016/j.transproceed.2006.06.008, Comparison of Rapamycin Versus FK506 on Expression of Cytoprotective Genes in the Rat Kidney Allografts Undergoing Chronic Allograft Nephropathy

Visit bosterbio.com/anti-bcl-xs-antibody-pa1232-boster.html to see all 10 publications.

Submit a product review to Biocompare.com

Submit a review of this product to Biocompare.com to receive a \$20 Amazon.com giftcard! Your reviews help your fellow scientists make the right decisions. Thank you for your contribution.



Anti-Bcl-XS/BCL2L1 Antibody

For Research Use Only. Not for use in diagnostic procedures.