

Anti-PKC gamma/PRKCG Antibody Picoband®

Catalog Number: PA1234

About PRKCG

The gamma isotype of protein kinase C (PKC gamma) is a member of the classical PKC (cPKC) subfamily which is activated by Ca (2+) and diacylglycerol in the presence of phosphatidylserine. Physiologically, PKC gamma is activated by a mechanism coupled with receptor-mediated breakdown of inositol phospholipid as other cPKC isotypes such as PKC alpha and PKC beta. PKC gamma is expressed solely in the brain and spinal cord and its localization is restricted to neurons, while PKC alpha and PKC beta are expressed in many tissues in addition to the brain. Within the brain, PKC gamma is the most abundant in the cerebellum, hippocampus and cerebral cortex, where the existence of neuronal plasticity has been demonstrated. PKC gamma gene is mutated in spinocerebellar ataxia type 14 (SCA14). Verbeek et al. (2005) point out the specific alterations in mutant PKC gamma function that could lead to the selective neuronal degeneration of SCA14.

Overview

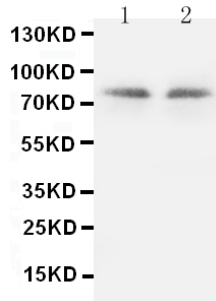
Product Name	Anti-PKC gamma/PRKCG Antibody Picoband®
Reactive Species	Human, Mouse, Rat
Description	Boster Bio Anti-PKC gamma/PRKCG Antibody catalog # PA1234. Tested in WB applications. This antibody reacts with Human, Mouse, Rat. The brand Picoband indicates this is a premium antibody that guarantees superior quality, high affinity, and strong signals with minimal background in Western blot applications. Only our best-performing antibodies are designated as Picoband, ensuring unmatched performance.
Application	WB
Clonality	Polyclonal
Formulation	Each vial contains antibody formulated with stabilizing components, 0.9mg NaCl, 0.2mg Na2HPO4, 0.05mg Thimerosal, 0.05mg NaN3. *This antibody is supplied in a stabilized formulation. Compatibility with conjugation reactions depends on the chemistry of the conjugation method used. For conjugation methods that are not compatible with the stabilizing components present in this formulation, a carrier-free antibody format is required.
Storage Instructions	Store at -20°C for one year from date of receipt. After reconstitution, at 4°C for one month. It can also be aliquotted and stored frozen at -20°C for six months. Avoid repeated freeze-thaw cycles.
Host	Rabbit
Uniprot ID	P05129

Technical Details

Immunogen	A synthetic peptide corresponding to a sequence at the C-terminus of human PKC gamma, identical to the related rat and mouse sequences.
Recommended Detection Systems	Boster recommends Enhanced Chemiluminescent Kit with anti-Rabbit IgG (EK1002) for Western

	blot.
Cross Reactivity	No cross-reactivity with other proteins
Isotype	Rabbit IgG
Form	Lyophilized
Concentration	Adding 0.2 ml of distilled water will yield a concentration of 500 ug/ml.
Purification	Immunogen affinity purified.
Suggested Dilutions	Western blot, 0.1-0.5ug/ml, Rat, Human, Mouse

Anti-PKC gamma/PRKCG Antibody Picoband® (PA1234) Images



Anti-PKC gamma antibody, PA1234, Western blotting
Lane 1: Rat Brain Tissue Lysate
Lane 2: Rat Brain Tissue Lysate

2 Publications Citing This Product

1. PubMed ID: 26937173, 5-(Bis(3-(2-hydroxyethyl)-1H-indol-2-yl)methyl)-2-hydroxybenzoic acid (BHIMHA): showing a strategy of designing drug to block lung metastasis of tumors
2. PubMed ID: 25160038, Extracts from Salvia-Nelumbinis naturalis alleviate hepatosteatosis via improving hepatic insulin sensitivity

Visit bosterbio.com/anti-pkc-gamma-antibody-pa1234-boster.html to see all 2 publications.

Submit a product review to Biocompare.com

Submit a review of this product to Biocompare.com to receive a \$20 Amazon.com giftcard! Your reviews help your fellow scientists make the right decisions. Thank you for your contribution.



Anti-PKC gamma/PRKCG Antibody

For Research Use Only. Not for use in diagnostic procedures.