

Anti-Protein SSX2 SSX2 Antibody Picoband®

Catalog Number: PA1235

About SSX2

Synovial sarcoma, X breakpoint 2, also known as SSX2, is a human gene. The product of this gene belongs to the family of highly homologous synovial sarcoma X (SSX) breakpoint proteins. SSX1, SSX2 and SSX4 genes have been involved in the t (X;18) translocation characteristically found in all synovial sarcomas. The SSX1 and SSX2 genes encode closely related proteins (81% identity) of 188 amino acids that are rich in charged amino acids. The N-terminal portion of each SSX protein exhibits homology to the Kruppel-associated box (KRAB), a transcriptional repressor domain previously found only in Kruppel-type zinc finger proteins.

Overview

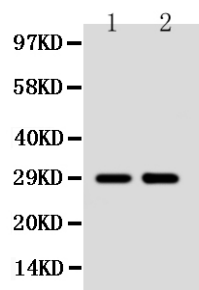
Product Name	Anti-Protein SSX2 SSX2 Antibody Picoband®
Reactive Species	Human
Description	Boster Bio Anti-Protein SSX2 SSX2 Antibody catalog # PA1235. Tested in IHC, WB applications. This antibody reacts with Human. The brand Picoband indicates this is a premium antibody that guarantees superior quality, high affinity, and strong signals with minimal background in Western blot applications. Only our best-performing antibodies are designated as Picoband, ensuring unmatched performance.
Application	IHC, WB
Clonality	Polyclonal
Formulation	Each vial contains antibody formulated with stabilizing components, 0.9mg NaCl, 0.2mg Na ₂ HPO ₄ , 0.05mg Thimerosal, 0.05mg NaN ₃ . *This antibody is supplied in a stabilized formulation. Compatibility with conjugation reactions depends on the chemistry of the conjugation method used. For conjugation methods that are not compatible with the stabilizing components present in this formulation, a carrier-free antibody format is required.
Storage Instructions	Store at -20°C for one year from date of receipt. After reconstitution, at 4°C for one month. It can also be aliquotted and stored frozen at -20°C for six months. Avoid repeated freeze-thaw cycles.
Host	Rabbit
Uniprot ID	Q16385

Technical Details

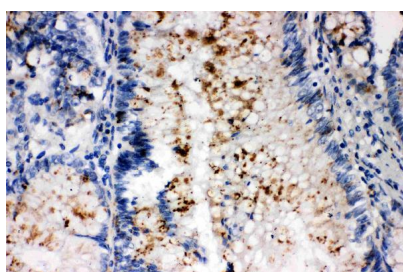
Immunogen	A synthetic peptide corresponding to a sequence at the C-terminus of human Protein SSX2.
Recommended Detection Systems	Boster recommends Enhanced Chemiluminescent Kit with anti-Rabbit IgG (EK1002) for Western blot, and HRP Conjugated anti-Rabbit IgG Super Vision Assay Kit (SV0002-1) for IHC(P).
Cross Reactivity	No cross-reactivity with other proteins

Isotype	Rabbit IgG
Form	Lyophilized
Concentration	Adding 0.2 ml of distilled water will yield a concentration of 500 ug/ml.
Purification	Immunogen affinity purified.
Suggested Dilutions	Immunohistochemistry (Paraffin-embedded Section), 0.5-1ug/ml, Human Western blot, 0.1-0.5ug/ml, Human

Anti-Protein SSX2 SSX2 Antibody Picoband® (PA1235) Images



Anti-SSX2 antibody, PA1235, Western blotting
Lane 1: MCF-7 Cell Lysate
Lane 2: HELA Cell Lysate



Anti-SSX2 antibody, PA1235, IHC(P)
IHC(P): Human Intestinal Cancer Tissue

Submit a product review to Biocompare.com

Submit a review of this product to Biocompare.com to receive a \$20 Amazon.com giftcard! Your reviews help your fellow scientists make the right decisions. Thank you for your contribution.



Anti-Protein SSX2 SSX2 Antibody

For Research Use Only. Not for use in diagnostic procedures.