

Anti-Cytokeratin 8/KRT8 Antibody

Catalog Number: PA1240

About KRT8

Keratin, type II cytoskeletal 8, also known as cytokeratin-8 (CK-8) or keratin-8 (K8) is a keratin protein that is encoded in humans by the KRT8 gene. This gene is a member of the type II keratin family clustered on the long arm of chromosome 12. Type I and type II keratins heteropolymerize to form intermediate-sized filaments in the cytoplasm of epithelial cells. The product of this gene typically dimerizes with keratin 18 to form an intermediate filament in simple single-layered epithelial cells. This protein plays a role in maintaining cellular structural integrity and also functions in signal transduction and cellular differentiation. Mutations in this gene cause cryptogenic cirrhosis. Alternatively spliced transcript variants have been found for this gene.

Overview

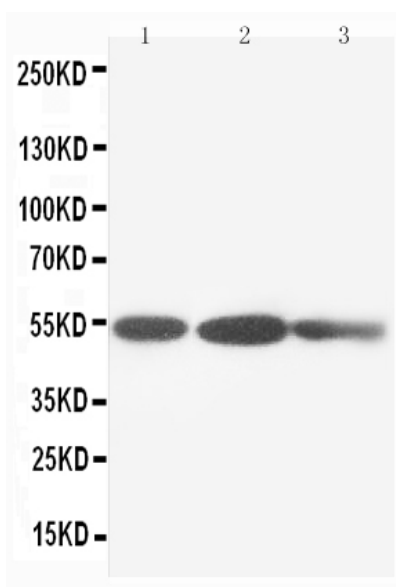
Product Name	Anti-Cytokeratin 8/KRT8 Antibody
Reactive Species	Human, Mouse, Rat
Description	Rabbit IgG polyclonal antibody for Keratin, type II cytoskeletal 8(KRT8) detection. Tested with WB, IHC-P in Human;Mouse;Rat.
Application	IHC, WB
Clonality	Polyclonal
Formulation	Each vial contains 5mg BSA, 0.9mg NaCl, 0.2mg Na ₂ HPO ₄ , 0.05mg Thimerosal, 0.05mg NaN ₃ .
Storage Instructions	At -20°C for one year. After reconstitution, at 4°C for one month. It can also be aliquotted and stored frozen at -20°C for a longer time. Avoid repeated freezing and thawing.
Host	Rabbit
Uniprot ID	P05787

Technical Details

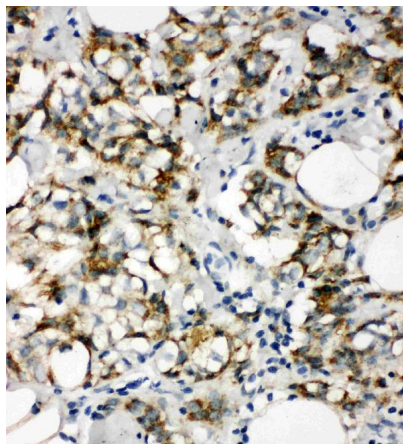
Immunogen	A synthetic peptide corresponding to a sequence at the N-terminus of human Cytokeratin 8(127-145aa QQKTARSNMDNMFESYIN), different from the related rat
-----------	--

	and mouse sequences by one amino acid.
Predicted Reactive Species	Hamster
Recommended Detection Systems	Boster recommends Enhanced Chemiluminescent Kit with anti-Rabbit IgG (EK1002) for Western blot, and HRP Conjugated anti-Rabbit IgG Super Vision Assay Kit (SV0002-1) for IHC(P).
Cross Reactivity	No cross reactivity with other proteins
Isotype	N/A
Form	Lyophilized
Concentration	Add 0.2ml of distilled water will yield a concentration of 500ug/ml.
Purification	Immunogen affinity purified.
Suggested Dilutions	Immunohistochemistry(Paraffin-embedded Section), 0.5-1µg/ml, Human, Mouse, Rat, By Heat Western blot, 0.1-0.5µg/ml, Human, Mouse, Rat
	For protocols please visit https://www.bosterbio.com/protocol-and-troubleshooting/

Anti-Cytokeratin 8/KRT8 Antibody (PA1240) Images



Anti-Cytokeratin 8 antibody, PA1240, Western blotting
Lane 1: HELA Cell Lysate
Lane 2: HT1080 Cell Lysate
Lane 3: COLO320 Cell Lysate



Anti-Cytokeratin 8 antibody, PA1240, IHC(P)
IHC(P): Human Mammary Cancer Tissue

Submit a product review to Biocompare.com

Submit a review of this product to Biocompare.com to receive a \$20 Amazon giftcard! Your reviews help your fellow scientists make the right decisions. Thank you for your contribution.

