

Anti-CD62L/SELL Antibody Picoband®

Catalog Number: PA1359

About Sell

L-selectin, also known as CD62L, is a cell adhesion molecule found on leukocytes. It belongs to the selectin family of proteins, which recognize sialylated carbohydrate groups. It is cleaved by ADAM17. SELL (L-selectin) is a cell surface component that is a member of a family of adhesion/homing receptors which play important roles in leukocyte-endothelial cell interactions. The molecule is composed of multiple domains: one homologous to lectins, one to epidermal growth factor, and two to the consensus repeat units found in C3/C4 binding proteins. L-selectin acts as a "homing receptor" for leukocytes to enter secondary lymphoid tissues via high endothelial venules. Ligands present on endothelial cells will bind to leukocyte expressing L-selectin, slowing leukocyte trafficking through the blood, and facilitating entry into a secondary lymphoid organ at that point.

Overview

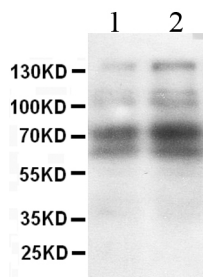
Product Name	Anti-CD62L/SELL Antibody Picoband®
Reactive Species	Mouse, Rat
Description	Boster Bio Anti-CD62L/SELL Antibody catalog # PA1359. Tested in WB applications. This antibody reacts with Mouse, Rat. The brand Picoband indicates this is a premium antibody that guarantees superior quality, high affinity, and strong signals with minimal background in Western blot applications. Only our best-performing antibodies are designated as Picoband, ensuring unmatched performance.
Application	WB
Clonality	Polyclonal
Formulation	Each vial contains antibody formulated with stabilizing components, 0.9mg NaCl, 0.2mg Na ₂ HPO ₄ , 0.05mg Thimerosal, 0.05mg NaN ₃ . *This antibody is supplied in a stabilized formulation. Compatibility with conjugation reactions depends on the chemistry of the conjugation method used. For conjugation methods that are not compatible with the stabilizing components present in this formulation, a carrier-free antibody format is required.
Storage Instructions	Store at -20°C for one year from date of receipt. After reconstitution, at 4°C for one month. It can also be aliquotted and stored frozen at -20°C for six months. Avoid repeated freeze-thaw cycles.
Host	Rabbit
Uniprot ID	P18337

Technical Details

Immunogen	A synthetic peptide corresponding to a sequence in the middle region of mouse L-selectin, identical to the related rat sequence.
Recommended Detection Systems	Boster recommends Enhanced Chemiluminescent Kit with anti-Rabbit IgG (EK1002) for Western

	blot.
Cross Reactivity	No cross-reactivity with other proteins
Isotype	Rabbit IgG
Form	Lyophilized
Concentration	Adding 0.2 ml of distilled water will yield a concentration of 500 ug/ml.
Purification	Immunogen affinity purified.
Suggested Dilutions	Western blot, 0.1-0.5ug/ml, Mouse, Rat

Anti-CD62L/SELL Antibody Picoband® (PA1359) Images



Anti-L-selectin antibody, PA1359, Western blotting
All lanes:
Anti L-selectin (PA1359) at 0.5ug/ml Lane 1: Rat Spleen
Tissue Lysate at 50ug Lane 2: Mouse Spleen Tissue Lysate at
50ug Predicted bind size: 42KD Observed bind size: 70KD

1 Publications Citing This Product

1. PubMed ID: 25822027, HIV-1 Nef and Vpu Interfere with L-Selectin (CD62L) Cell Surface Expression To Inhibit Adhesion and Signaling in Infected CD4+ T Lymphocytes

Visit bosterbio.com/anti-l-selectin-antibody-pa1359-boster.html to see all 1 publications.

Submit a product review to Biocompare.com

Submit a review of this product to Biocompare.com to receive a \$20 Amazon.com giftcard! Your reviews help your fellow scientists make the right decisions. Thank you for your contribution.



Anti-CD62L/SELL Antibody

For Research Use Only. Not for use in diagnostic procedures.