

Anti-CDC42 Antibody

Catalog Number: PA1366

About CDC42

Cell division control protein 42 homolog also known as CDC42 is a protein involved in regulation of the cell cycle. In humans, CDC42 is encoded by the CDC42 gene. CDC42 is a small GTPase of the Rho-subfamily, which regulates signaling pathways that control diverse cellular functions including cell morphology, migration, endocytosis and cell cycle progression. This protein is highly similar to *Saccharomyces cerevisiae* Cdc 42, and is able to complement the yeast *cdc42-1* mutant. The product of oncogene *Dbl* was reported to specifically catalyze the dissociation of GDP from this protein. This protein could regulate actin polymerization through its direct binding to Neural Wiskott-Aldrich syndrome protein (N-WASP), which subsequently activates Arp2/3 complex. Alternative splicing of this gene results in multiple transcript variants.

Overview

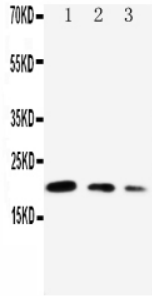
Product Name	Anti-CDC42 Antibody
Reactive Species	Bovine, Human, Mouse, Rat
Description	Boster Bio Anti-CDC42 Antibody catalog # PA1366. Tested in IHC, WB applications. This antibody reacts with Bovine, Human, Mouse, Rat.
Application	IHC, WB
Clonality	Polyclonal
Formulation	Each vial contains 5mg BSA, 0.9mg NaCl, 0.2mg Na ₂ HPO ₄ , 0.05mg Thimerosal, 0.05mg NaN ₃ .
Storage Instructions	Store at -20°C for one year from date of receipt. After reconstitution, at 4°C for one month. It can also be aliquotted and stored frozen at -20°C for six months. Avoid repeated freeze-thaw cycles.
Host	Rabbit
Uniprot ID	P60953

Technical Details

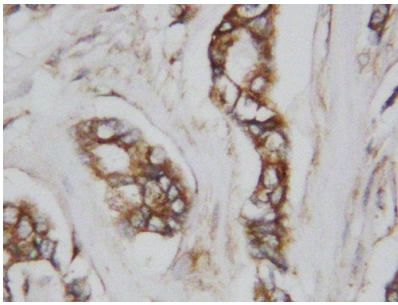
Immunogen	A synthetic peptide corresponding to a sequence in the middle region of human CDC42, identical to the related mouse and rat sequences.
Recommended Detection Systems	Boster recommends Enhanced Chemiluminescent Kit with anti-Rabbit IgG (EK1002) for Western blot, and HRP Conjugated anti-Rabbit IgG Super Vision Assay Kit (SV0002-1) for IHC(P).
Cross Reactivity	No cross-reactivity with other proteins
Isotype	Rabbit IgG
Form	Lyophilized
Concentration	Adding 0.2 ml of distilled water will yield a concentration of 500 ug/ml.

Purification	Immunogen affinity purified.
Suggested Dilutions	<p>Dilute the sample so that the expected range of concentrations fall within the detection range of this kit.</p> <p>If the expected range of concentration is unknown, a pilot test should be conducted to decide the optimal dilution ratio for your samples.</p> <p>Some PubMed article(s) citing the expression level of this target are as follows: Boster Bio's internal QC testing used: Immunohistochemistry (Paraffin-embedded Section), 0.5-1ug/ml, Human, Rat, Mouse, By Heat Western blot, 0.1-0.5ug/ml, Human, Bovine, Mouse, Rat</p>

Anti-CDC42 Antibody (PA1366) Images



Anti-CDC42 antibody, PA1366, Western blotting
Lane 1: Recombinant Human CDC42 Protein 10ng
Lane 2: Recombinant Human CDC42 Protein 5ng
Lane 3: Recombinant Human CDC42 Protein 2.5ng



Anti-CDC42 antibody, PA1366, IHC(P)
IHC(P): Human Mammary Cancer Tissue

1 Publications Citing This Product

1. PubMed ID: 28934273, Han F1, Zhuang TT1, Chen JJ1, Zhu XL1,2, Cai YF1, Lu YP1. PLoS One. 2017 Sep 21;12(9):e0185102. doi: 10.1371/journal.pone.0185102. eCollection 2017. Novel derivative of Paeonol, Paeononlsilatie sodium, alleviates behavioral damage and hippocampal ...

Visit bosterbio.com/anti-cdc42-antibody-pa1366-boster.html to see all 1 publications.

Submit a product review to Biocompare.com

Submit a review of this product to Biocompare.com to receive a \$20 Amazon.com giftcard! Your reviews help your fellow scientists make the right decisions. Thank you for your contribution.



Anti-CDC42 Antibody