

Anti-MDM2 Antibody

Catalog Number: PA1378

About MDM2

Mdm2 is an important negative regulator of the p53 tumor suppressor. It is the name of a gene as well as the protein encoded by that gene. Mdm2 protein functions both as an E3 ubiquity lipase that recognizes the N-terminal trans-activation domain (TAD) of the p53 tumor suppressor and an inhibitor of p53 transcriptional activation. Oliner et al. (1992) used MDM2 clones to localize the human gene to chromosome 12q13-q14 by analysis of human-hamster somatic cell hybrids.

Overview

Product Name	Anti-MDM2 Antibody
Reactive Species	Human, Mouse, Rat
Description	Boster Bio Anti-MDM2 Antibody catalog # PA1378. Tested in WB applications. This antibody reacts with Human, Mouse, Rat.
Application	WB
Clonality	Polyclonal WH-3
Formulation	Each vial contains 5mg BSA, 0.9mg NaCl, 0.2mg Na2HPO4, 0.05mg Thimerosal, 0.05mg NaN3.
Storage Instructions	Store at -20°C for one year from date of receipt. After reconstitution, at 4°C for one month. It can also be aliquotted and stored frozen at -20°C for six months. Avoid repeated freeze-thaw cycles.
Host	Rabbit
Uniprot ID	Q00987

Technical Details

Immunogen	A synthetic peptide corresponding to a sequence at the N-terminus of human MDM2, different from the related mouse sequence by three amino acids, and different from rat sequence by two amino acids.
Predicted Reactive Species	Chicken
Recommended Detection Systems	Boster recommends Enhanced Chemiluminescent Kit with anti-Rabbit IgG (EK1002) for Western blot.
Cross Reactivity	No cross reactivity with other proteins
Form	Lyophilized
Concentration	Adding 0.2 ml of distilled water will yield a concentration of 500 ug/ml.
Purification	Immunogen affinity purified.

Suggested Dilutions

Dilute the sample so that the expected range of concentrations fall within the detection range of this kit.

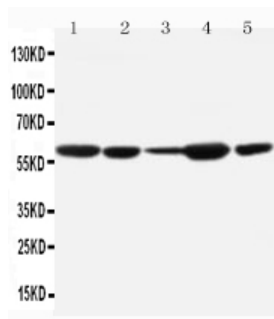
If the expected range of concentration is unknown, a pilot test should be conducted to decide the optimal dilution ratio for your samples.

Some PubMed article(s) citing the expression level of this target are as follows:

Boster Bio's internal QC testing used:

Western blot, 0.1-0.5ug/ml, Human, Mouse, Rat

Anti-MDM2 Antibody (PA1378) Images



Anti-MDM2 antibody, PA1378, Western blotting

Lane 1: Mouse Liver Tissue Lysate
Lane 2: Mouse Spleen Tissue Lysate
Lane 3: Mouse Brain Tissue Lysate
Lane 4: Mouse Thymus Tissue Lysate
Lane 5: Mouse Ovary Tissue Lysate

7 Publications Citing This Product

1. PubMed ID: -, Jiang X,Yuan J,Dou Y,Zeng D, Xiao S.Lipopolysaccharide Affects the Proliferation and Glucose Metabolism of Cervical Cancer Cells Through the FRA1/MDM2/p53 Pathway.Int J Med Sci 2021;18(4): 1030-1038.doi:10. 7150/ijms.47360.
2. PubMed ID: 26229107, The Oncoprotein HBXIP Modulates the Feedback Loop of MDM2/p53 to Enhance the Growth of Breast Cancer
3. PubMed ID: 26549498, Fra-1 is upregulated in lung cancer tissues and inhibits the apoptosis of lung cancer cells by the P53 signaling pathway

Visit bosterbio.com/anti-mdm2-antibody-pa1378-boster.html to see all 7 publications.

Submit a product review to Biocompare.com

Submit a review of this product to Biocompare.com to receive a \$20 Amazon.com giftcard! Your reviews help your fellow scientists make the right decisions. Thank you for your contribution.



Anti-MDM2 Antibody