

Anti-Metalloproteinase inhibitor 1 TIMP1 Antibody Picoband®

Catalog Number: PA1385

About TIMP1

TIMP metalloproteinase inhibitor 1, also known as TIMP1, a tissue inhibitor of metalloproteinases, is a glycoprotein that is expressed from the several tissues of organisms. This protein a member of the TIMP family. The glycoprotein is a natural inhibitor of the matrix metalloproteinases (MMPs), a group of peptidases involved in degradation of the extracellular matrix. In addition to its inhibitory role against most of the known MMPs, the encoded protein is able to promote cell proliferation in a wide range of cell types, and may also have an anti-apoptotic function. Transcription of this gene is highly inducible in response to many cytokines and hormones. TIMP was found to be located about 22 cM proximal to OTC (300461).

Overview

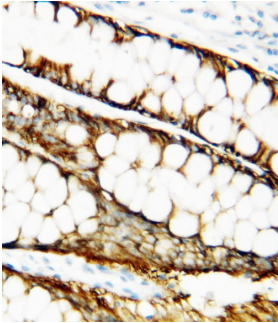
Product Name	Anti-Metalloproteinase inhibitor 1 TIMP1 Antibody Picoband®
Reactive Species	Human
Description	Boster Bio Anti-Metalloproteinase inhibitor 1 TIMP1 Antibody catalog # PA1385. Tested in IHC, WB applications. This antibody reacts with Human. The brand Picoband indicates this is a premium antibody that guarantees superior quality, high affinity, and strong signals with minimal background in Western blot applications. Only our best-performing antibodies are designated as Picoband, ensuring unmatched performance.
Application	IHC, WB
Clonality	Polyclonal
Formulation	Each vial contains antibody formulated with stabilizing components, 0.9mg NaCl, 0.2mg Na ₂ HPO ₄ , 0.05mg Thimerosal, 0.05mg NaN ₃ . *This antibody is supplied in a stabilized formulation. Compatibility with conjugation reactions depends on the chemistry of the conjugation method used. For conjugation methods that are not compatible with the stabilizing components present in this formulation, a carrier-free antibody format is required.
Storage Instructions	Store at -20°C for one year from date of receipt. After reconstitution, at 4°C for one month. It can also be aliquotted and stored frozen at -20°C for six months. Avoid repeated freeze-thaw cycles.
Host	Rabbit
Uniprot ID	P01033

Technical Details

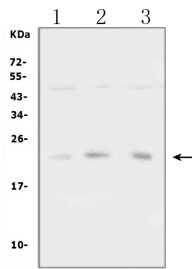
Immunogen	A synthetic peptide corresponding to a sequence at the C-terminus of human TIMP-1.
Recommended Detection Systems	Boster recommends Enhanced Chemiluminescent Kit with anti-Rabbit IgG (EK1002) for Western blot, and HRP Conjugated anti-Rabbit IgG Super Vision Assay Kit (SV0002-1) for IHC(P).
Cross Reactivity	No cross-reactivity with other proteins

Isotype	Rabbit IgG
Form	Lyophilized
Concentration	Adding 0.2 ml of distilled water will yield a concentration of 500 ug/ml.
Purification	Immunogen affinity purified.
Suggested Dilutions	Immunohistochemistry (Paraffin-embedded Section), 0.5-1ug/ml, Human Western blot, 0.1-0.5ug/ml, Human

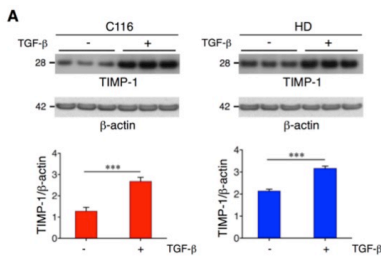
Anti-Metalloproteinase inhibitor 1 TIMP1 Antibody Picoband® (PA1385) Images



Anti-TIMP-1 antibody, PA1385, IHC(P)IHC(P): Human Mammary Cancer Tissue



Western blot analysis of TIMP1 using anti-TIMP1 antibody (PA1385). Electrophoresis was performed on a 5-20% SDS-PAGE gel at 70V (Stacking gel) / 90V (Resolving gel) for 2-3 hours. The sample well of each lane was loaded with 50ug of sample under reducing conditions. Lane 1: human U-87MG whole cell lysates Lane 2: human U2OS whole cell lysates Lane 3: human PC-3 whole cell lysates After Electrophoresis, proteins were transferred to a Nitrocellulose membrane at 150mA for 50-90 minutes. Blocked the membrane with 5% Non-fat Milk/ TBS for 1.5 hour at RT. The membrane was incubated with rabbit anti-TIMP1 antigen affinity purified polyclonal antibody (Catalog # PA1385) at 0.5 ug/mL overnight at 4°C, then washed with TBS-0.1%Tween 3 times with 5 minutes each and probed with a goat anti-rabbit IgG-HRP secondary antibody at a dilution of 1:10000 for 1.5 hour at RT. The signal is developed using an Enhanced Chemiluminescent detection (ECL) kit (Catalog # EK1002) with Tanon 5200 system. A specific band was detected for TIMP1 at approximately 23KD. The expected band size for TIMP1 is at 23KD.



Western blot analysis of metalloproteinase inhibitor 1 TIMP1 using anti-Metalloproteinase inhibitor 1 TIMP1 antibody (PA1385). Electrophoresis was performed on a 5-20% SDS-PAGE gel at 70V (Stacking gel) / 90V (Resolving gel) for 2-3 hours. The sample well of each lane was loaded with 30 ug of sample under reducing conditions. After electrophoresis, proteins were transferred to a nitrocellulose membrane at 150 mA for 50-90 minutes. Blocked the membrane with 5% milk in TBST for 1.5 hour at RT. The membrane was incubated with rabbit anti-Metalloproteinase inhibitor 1 TIMP1 antibody (PA1385) at 1:250 overnight at 4°C, then washed with TBS-0.1%Tween 3 times with 5 minutes each and probed with a goat anti-rabbit IgG-HRP secondary antibody at a dilution of 1:2000 for 2 hour at RT. The signal is developed using an Enhanced Chemiluminescent detection (ECL) kit (Catalog # EK1002) with Tanon 5200 system. A specific band was detected for metalloproteinase inhibitor 1 TIMP1 at approximately 28 kDa. The expected band size for metalloproteinase inhibitor 1 TIMP1 is at 23 kDa.

23 Publications Citing This Product

1. PubMed ID: 32463570, Xu T, Pan L, Li L, Hu S, Zhou H, Yang C, Yang J, Li H, Liu Y, Meng X, Li J. MicroRNA-708 modulates Hepatic Stellate Cells activation and enhances extracellular matrix accumulation via direct targeting TMEM88. J Cell Mol Med. 2020 Jul;24(13):7127-7140. doi: 10.1111/jc
2. PubMed ID: 25289023, Expression of matrix metalloproteinases-8 and -9 and their tissue inhibitor in the condyles of diabetic rats with mandibular advancement
3. PubMed ID: 26550147, Andrographolide plays an important role in bleomycin-induced pulmonary fibrosis treatment

Visit bosterbio.com/anti-timp-1-antibody-pa1385-boster.html to see all 23 publications.

Submit a product review to Biocompare.com

Submit a review of this product to Biocompare.com to receive a \$20 Amazon.com giftcard! Your reviews help your fellow scientists make the right decisions. Thank you for your contribution.



Anti-Metalloproteinase inhibitor 1 TIMP1 Antibody

For Research Use Only. Not for use in diagnostic procedures.