

Anti-VEGF Receptor 1/FLT1 Antibody

Catalog Number: PA1399

About FLT1

Vascular endothelial growth factor receptor 1 (FLT1) is a protein that in humans is encoded by the FLT1 gene. Oncogene FLT belongs to the src gene family. It is mapped to 13q12. The deduced 1,338-amino acid protein has a calculated molecular mass of 150.6 kD. It has a 758-amino acid extracellular domain, followed by a 22-amino acid transmembrane region and a 558-amino acid cytoplasmic region containing a cluster of basic amino acids and a tyrosine kinase domain. sFLT-1 was identified in placenta, adult lung, kidney, liver and uterus. Like other members of this family, it shows tyrosine protein kinase activity that is important for the control of cell proliferation and differentiation.

Overview

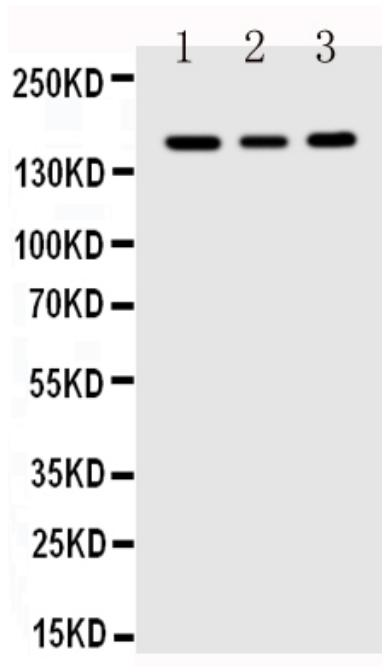
| | |
|----------------------|---|
| Product Name | Anti-VEGF Receptor 1/FLT1 Antibody |
| Reactive Species | Human |
| Description | Rabbit IgG polyclonal antibody for Vascular endothelial growth factor receptor 1 (FLT1) detection. Tested with WB in Human. |
| Application | WB |
| Clonality | Polyclonal |
| Formulation | Each vial contains 5mg BSA, 0.9mg NaCl, 0.2mg Na ₂ HPO ₄ , 0.05mg Thimerosal, 0.05mg NaN ₃ . |
| Storage Instructions | At -20°C for one year. After reconstitution, at 4°C for one month. It can also be aliquotted and stored frozen at -20°C for a longer time. Avoid repeated freezing and thawing. |
| Host | Rabbit |
| Uniprot ID | P17948 |

Technical Details

| | |
|-----------|--|
| Immunogen | A synthetic peptide corresponding to a sequence at the C-terminus of human FLT1 (1299-1317aa HVSEGKRRFTYDHAELERK). |
|-----------|--|

| | |
|-------------------------------|--|
| Recommended Detection Systems | Boster recommends Enhanced Chemiluminescent Kit with anti-Rabbit IgG (EK1002) for Western blot. |
| Cross Reactivity | No cross reactivity with other proteins |
| Isotype | N/A |
| Form | Lyophilized |
| Concentration | Add 0.2ml of distilled water will yield a concentration of 500ug/ml. |
| Purification | Immunogen affinity purified. |
| Suggested Dilutions | Western blot, 0.1-0.5µg/ml, Human |
| | For protocols please visit https://www.bosterbio.com/protocol-and-troubleshooting/ |

Anti-VEGF Receptor 1/FLT1 Antibody (PA1399) Images



Anti-FLT1 antibody, PA1399, Western blotting

Lane 1: MCF-7 Cell Lysate

Lane 2: SGC Cell Lysate

Lane 3: MM231 Cell Lysate

Submit a product review to [Biocompare.com](https://www.biocompare.com)



Submit a review of this product to Biocompare.com to receive a \$20 Amazon giftcard! Your reviews help your fellow scientists make the right decisions. Thank you for your contribution.