

Anti-Bcl-2-like protein 2 Bcl2L2 Antibody Picoband®

Catalog Number: PA1426-1

About BCL2L2

Bcl-2-like protein 2 is a protein that in humans is encoded by the BCL2L2 gene. This gene encodes a pro-survival (anti-apoptotic) member of the bcl-2 protein family. Its gene is mapped to human chromosome 14q11.2-q12. In all, it has got 193 amino acids. Generally speaking, the BCL2 can be found in brain, colon and salivary gland. Acting as the anti- and pro-apoptotic regulators, it has played a vital role in reducing the cell apoptosis under cytotoxic conditions.

Overview

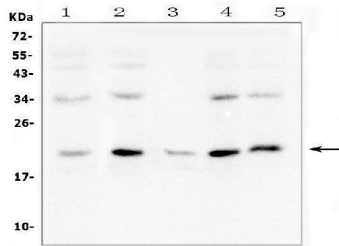
Product Name	Anti-Bcl-2-like protein 2 Bcl2L2 Antibody Picoband®
Reactive Species	Human, Mouse, Rat
Description	Boster Bio Anti-Bcl-2-like protein 2 Bcl2L2 Antibody catalog # PA1426-1. Tested in Flow Cytometry, IHC, ICC, WB applications. This antibody reacts with Human, Mouse, Rat. The brand Picoband indicates this is a premium antibody that guarantees superior quality, high affinity, and strong signals with minimal background in Western blot applications. Only our best-performing antibodies are designated as Picoband, ensuring unmatched performance.
Application	Flow Cytometry, IHC, ICC, WB
Clonality	Polyclonal
Formulation	Each vial contains antibody formulated with stabilizing components, 0.9mg NaCl, 0.2mg Na ₂ HPO ₄ , 0.05mg Thimerosal, 0.05mg NaN ₃ . *This antibody is supplied in a stabilized formulation. Compatibility with conjugation reactions depends on the chemistry of the conjugation method used. For conjugation methods that are not compatible with the stabilizing components present in this formulation, a carrier-free antibody format is required.
Storage Instructions	Store at -20°C for one year from date of receipt. After reconstitution, at 4°C for one month. It can also be aliquotted and stored frozen at -20°C for six months. Avoid repeated freeze-thaw cycles.
Host	Rabbit
Uniprot ID	Q92843

Technical Details

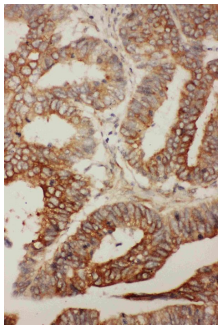
Immunogen	A synthetic peptide corresponding to a sequence in the middle region of human BCL2L2, identical to the related rat and mouse sequences.
Recommended Detection Systems	Boster recommends Enhanced Chemiluminescent Kit with anti-Rabbit IgG (EK1002) for Western blot, and HRP Conjugated anti-Rabbit IgG Super Vision Assay Kit (SV0002-1) for IHC(P), IHC(F) and ICC.
Cross Reactivity	No cross-reactivity with other proteins

Isotype	Rabbit IgG
Form	Lyophilized
Concentration	Adding 0.2 ml of distilled water will yield a concentration of 500 ug/ml.
Purification	Immunogen affinity purified.
Suggested Dilutions	Immunohistochemistry (Paraffin-embedded Section), 0.5-1ug/ml, Human, Rat, Mouse Western blot, 0.1-0.5ug/ml, Human, Rat, Mouse Immunohistochemistry (Frozen Section), 0.5-1ug/ml, Human Immunocytochemistry, 0.5-1ug/ml, Human Flow Cytometry (Fixed), 1-3ug/1x10 ⁶ cells, Human

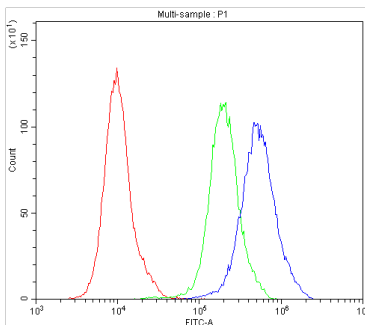
Anti-Bcl-2-like protein 2 Bcl2L2 Antibody Picoband® (PA1426-1) Images



Western blot analysis of Bcl2L2 using anti-Bcl2L2 antibody (PA1426-1). Electrophoresis was performed on a 5-20% SDS-PAGE gel at 70V (Stacking gel) / 90V (Resolving gel) for 2-3 hours. The sample well of each lane was loaded with 50ug of sample under reducing conditions. Lane 1: human A549 whole cell lysates, Lane 2: human K562 whole cell lysates, Lane 3: human U-937 whole cell lysates, Lane 4: human HeLa whole cell lysates., Lane 5: human A431 whole cell lysates. After Electrophoresis, proteins were transferred to a Nitrocellulose membrane at 150mA for 50-90 minutes. Blocked the membrane with 5% Non-fat Milk/ TBS for 1.5 hour at RT. The membrane was incubated with rabbit anti-Bcl2L2 antigen affinity purified polyclonal antibody (Catalog # PA1426-1) at 0.5 ug/mL overnight at 4°C, then washed with TBS-0.1%Tween 3 times with 5 minutes each and probed with a goat anti-rabbit IgG-HRP secondary antibody at a dilution of 1:10000 for 1.5 hour at RT. The signal is developed using an Enhanced Chemiluminescent detection (ECL) kit (Catalog # EK1002) with Tanon 5200 system. A specific band was detected for Bcl2L2 at approximately 21kD. The expected band size for Bcl2L2 is at 21kD.



IHC analysis of BCL2L2 using anti-BCL2L2 antibody (PA1426-1). BCL2L2 was detected in paraffin-embedded section of human rectal cancer tissues. Heat mediated antigen retrieval was performed in citrate buffer (pH6, epitope retrieval solution) for 20 mins. The tissue section was blocked with 10% goat serum. The tissue section was then incubated with 1ug/ml rabbit anti-BCL2L2 Antibody (PA1426-1) overnight at 4°C. Biotinylated goat anti-rabbit IgG was used as secondary antibody and incubated for 30 minutes at 37°C. The tissue section was developed using Streptavidin-Biotin-Complex (SABC)(Catalog # SA1022) with DAB as the chromogen.



Flow Cytometry analysis of PC-3 cells using anti-BCL2L2 antibody (PA1426-1). Overlay histogram showing PC-3 cells stained with PA1426-1 (Blue line). To facilitate intracellular staining, cells were fixed with 4% paraformaldehyde and permeabilized with permeabilization buffer. The cells were blocked with 10% normal goat serum. And then incubated with rabbit anti-BCL2L2 Antibody (PA1426-1, 1ug/1x10⁶ cells) for 30 min at 20°C. DyLight® 488 conjugated goat anti-rabbit IgG (BA1127, 5-10ug/1x10⁶ cells) was used as secondary antibody for 30 minutes at 20°C. Isotype control antibody (Green line) was rabbit IgG (1ug/1x10⁶) used under the same conditions. Unlabelled sample (Red line) was also used as a control.

1 Publications Citing This Product

by Downregulating Phosphatidylinositol 3-Kinase (PI3K)/Akt Pathway. Med Sci Monit. 2020 Dec 31;26:e928403. doi:10.12659/MSM.928403. PMID:33382

Visit bosterbio.com/anti-bcl2l2-antibody-pa1426-1-boster.html to see all 1 publications.

Submit a product review to Biocompare.com

Submit a review of this product to Biocompare.com to receive a \$20 Amazon.com giftcard! Your reviews help your fellow scientists make the right decisions. Thank you for your contribution.



Anti-Bcl-2-like protein 2 Bcl2L2 Antibody

For Research Use Only. Not for use in diagnostic procedures.