

Anti-Caspase-1(P20)/CASP1 Antibody Picoband®

Catalog Number: PA1440

About CASP1

Caspase 1 is a cysteine protease that regulates inflammatory processes through its capacity to process and activate the interleukin-1-beta, IL18, and IL33 precursor proteins. It belongs to a family of cysteine proteases known as caspases that always cleave proteins following an aspartic acid residue. The Caspase1 gene consists of 10 exons spanning at least 10.6 kb. The Caspase 1 gene is mapped to 11q23, a site frequently involved in rearrangement in human cancers, including a number of leukemias and lymphomas, by Southern DNA blot analysis of rodent-human hybrids and by in situ hybridization to normal human metaphase chromosomes. Caspase 1 has been shown to induce cell necrosis or pyroptosis and may function in various developmental stages.

Overview

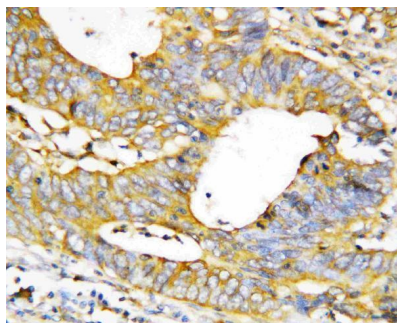
Product Name	Anti-Caspase-1(P20)/CASP1 Antibody Picoband®
Reactive Species	Human
Description	Boster Bio Anti-Caspase-1 (P20)/CASP1 Antibody catalog # PA1440. Tested in IHC, WB applications. This antibody reacts with Human. The brand Picoband indicates this is a premium antibody that guarantees superior quality, high affinity, and strong signals with minimal background in Western blot applications. Only our best-performing antibodies are designated as Picoband, ensuring unmatched performance.
Application	IHC, WB
Clonality	Polyclonal
Formulation	Each vial contains antibody formulated with stabilizing components, 0.9mg NaCl, 0.2mg Na ₂ HPO ₄ , 0.05mg Thimerosal, 0.05mg NaN ₃ . *This antibody is supplied in a stabilized formulation. Compatibility with conjugation reactions depends on the chemistry of the conjugation method used. For conjugation methods that are not compatible with the stabilizing components present in this formulation, a carrier-free antibody format is required.
Storage Instructions	Store at -20°C for one year from date of receipt. After reconstitution, at 4°C for one month. It can also be aliquotted and stored frozen at -20°C for six months. Avoid repeated freeze-thaw cycles.
Host	Rabbit
Uniprot ID	P29466

Technical Details

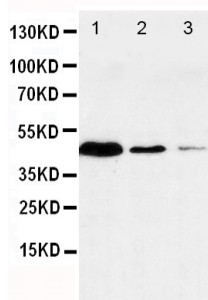
Immunogen	A synthetic peptide corresponding to a sequence at the N-terminus of human CASP1.
Recommended Detection Systems	Boster recommends Enhanced Chemiluminescent Kit with anti-Rabbit IgG (EK1002) for Western blot, and HRP Conjugated anti-Rabbit IgG Super Vision Assay Kit (SV0002-1) for IHC(P).

Cross Reactivity	No cross-reactivity with other proteins
Isotype	Rabbit IgG
Form	Lyophilized
Concentration	Adding 0.2 ml of distilled water will yield a concentration of 500 ug/ml.
Purification	Immunogen affinity purified.
Suggested Dilutions	Immunohistochemistry (Paraffin-embedded Section), 0.5-1ug/ml, Human Western blot, 0.1-0.5ug/ml, Human

Anti-Caspase-1(P20)/CASP1 Antibody Picoband® (PA1440) Images



Anti-Caspase-1(P20) antibody, PA1440, IHC(P)IHC(P): Human Mammary Cancer Tissue



Anti-Caspase-1(P20) antibody, PA1440, Western blotting
Lane 1: JURKAT Cell Lysate Lane 2: RAJI Cell Lysate
Lane 3: CEM Cell Lysate

23 Publications Citing This Product

1. PubMed ID: 10.1016/j.ecoenv.2021.113097, Synergistic effects of botanical curcumin-induced programmed cell death on the management of Spodoptera litura Fabricius with avermectin
2. PubMed ID: -, Peng Yuan, Xifeng Sun, Xiao Liu, Georg Hutterer, Karl Pummer, Boris Hager, Zhangqun Ye, Zhiqiang Chen, Kaempferol alleviates calcium oxalate crystal-induced renal injury and crystal deposition via regulation of the AR/NOX2 signaling pathway, *Phytomedicine*, 2021, 153555, ISSN 0944-7113, <https://doi.org/10.1016/j.phymed.2021.153555>.
3. PubMed ID: 22101081, Fu Y, Zhao Z, Wu Y, Wu K, Xu X, Liu Y, Tong C. *J Ethnopharmacol.* 2012 Jan 6;139(1):26-33. Doi: 10.1016/J.Jep.2011.08.077. Epub 2011 Nov 10. Therapeutic Mechanisms Of Tongmai Dasheng Tablet On Tripterygium Glycosides Induced Rat Model For Premature...

Visit bosterbio.com/anti-caspase-1-p20-antibody-pa1440-boster.html to see all 23 publications.

Submit a product review to Biocompare.com

Submit a review of this product to Biocompare.com to receive a \$20 Amazon.com giftcard! Your reviews help your fellow scientists make the right decisions. Thank you for your contribution.



Anti-Caspase-1(P20)/CASP1 Antibody

For Research Use Only. Not for use in diagnostic procedures.