

## Anti-Caspase-6(P18)/CASP6 Antibody Picoband®

Catalog Number: PA1441-1

### About Casp6

Caspase 6 is an enzyme that in humans is encoded by the caspase 6 gene. This gene encodes a protein that is a member of the cysteine-aspartic acid protease (caspase) family. Using radiation hybrid mapping, the Caspase 6 gene is localized to human chromosome 4q25-q26. Caspase 6 functions as a downstream enzyme in the caspase activation cascade. And Caspase 6 can cleave lamin A to its signature apoptotic fragment.

### Overview

Product Name	Anti-Caspase-6(P18)/CASP6 Antibody Picoband®
Reactive Species	Mouse, Rat
Description	Boster Bio Anti-Caspase-6 (P18)/CASP6 Antibody catalog # PA1441-1. Tested in IHC, WB applications. This antibody reacts with Mouse, Rat. The brand Picoband indicates this is a premium antibody that guarantees superior quality, high affinity, and strong signals with minimal background in Western blot applications. Only our best-performing antibodies are designated as Picoband, ensuring unmatched performance.
Application	IHC, WB
Clonality	Polyclonal
Formulation	Each vial contains antibody formulated with stabilizing components, 0.9mg NaCl, 0.2mg Na <sub>2</sub> HPO <sub>4</sub> , 0.05mg Thimerosal, 0.05mg NaN <sub>3</sub> . *This antibody is supplied in a stabilized formulation. Compatibility with conjugation reactions depends on the chemistry of the conjugation method used. For conjugation methods that are not compatible with the stabilizing components present in this formulation, a carrier-free antibody format is required.
Storage Instructions	Store at -20°C for one year from date of receipt. After reconstitution, at 4°C for one month. It can also be aliquotted and stored frozen at -20°C for six months. Avoid repeated freeze-thaw cycles.
Host	Rabbit
Uniprot ID	O35397

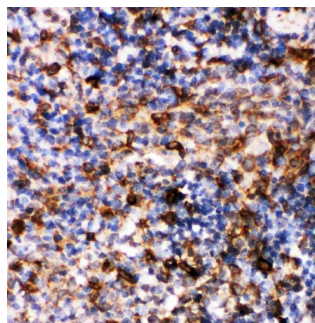
### Technical Details

Immunogen	A synthetic peptide corresponding to a sequence at the N-terminus of rat Caspase-6(P18), different from the related mouse sequence by two amino acids.
Recommended Detection Systems	Boster recommends Enhanced Chemiluminescent Kit with anti-Rabbit IgG (EK1002) for Western blot, and HRP Conjugated anti-Rabbit IgG Super Vision Assay Kit (SV0002-1) for IHC(P) and IHC(F).
Cross Reactivity	No cross-reactivity with other proteins
Isotype	Rabbit IgG

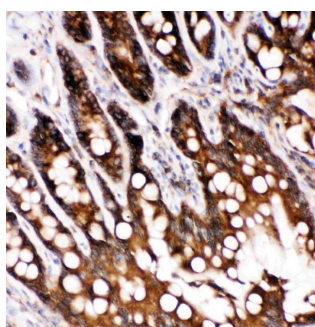
Form	Lyophilized
Concentration	Adding 0.2 ml of distilled water will yield a concentration of 500 ug/ml.
Purification	Immunogen affinity purified.
Suggested Dilutions	Immunohistochemistry (Paraffin-embedded Section), 0.5-1ug/ml, Mouse, Rat Immunohistochemistry (Frozen Section), 0.5-1ug/ml, Rat, Mouse Western blot, 0.1-0.5ug/ml, Mouse, Rat

## Anti-Caspase-6(P18)/CASP6 Antibody Picoband® (PA1441-1) Images

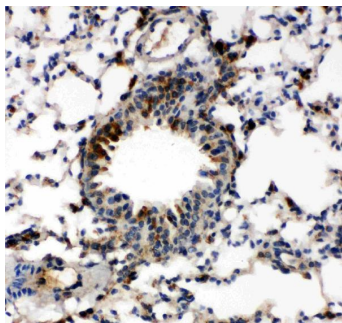
---



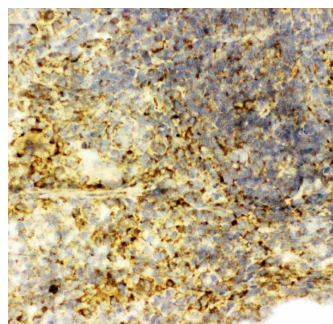
Anti-Caspase-6(P18) antibody, PA1441-1, IHC(P)IHC(P): Rat Spleen Tissue



Anti-Caspase-6(P18) antibody, PA1441-1, IHC(P)IHC(P): Rat Intestine Tissue

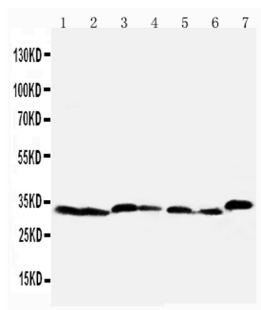


Anti-Caspase-6(P18) antibody, PA1441-1, IHC(P)IHC(P): Mouse Lung Tissue



Anti-Caspase-6(P18) antibody, PA1441-1, IHC(F)IHC(F): Rat Spleen Tissue

Anti-Caspase-6(P18) antibody, PA1441-1, Western blotting  
Lane 1: Rat Liver Tissue Lysate  
Lane 2: Rat Kidney Tissue Lysate  
Lane 3: Rat Testis Tissue Lysate  
Lane 4: NRK Cell Lysate  
Lane 5: Mouse Liver Tissue Lysate  
Lane 6: Mouse Kidney Tissue Lysate  
Lane 7: Mouse Testis Tissue Lysate



## Submit a product review to Biocompare.com

Submit a review of this product to Biocompare.com to receive a \$20 Amazon.com giftcard! Your reviews help your fellow scientists make the right decisions. Thank you for your contribution.



### Anti-Caspase-6(P18)/CASP6 Antibody

For Research Use Only. Not for use in diagnostic procedures.