

## Anti-SFTPA1 Antibody Picoband®

Catalog Number: PA1458

### About Sftpa1

Surfactant protein A is an innate immune system collectin. The gene encoding SP-A map to mouse chromosome 14. Surfactant protein-A, which plays a role in innate host defense in the lung, is also expressed in the Eustachian tube. We report that the frequency of specific surfactant protein-A haplotypes and genotypes differs between children with recurrent otitis media compared with a control population.

### Overview

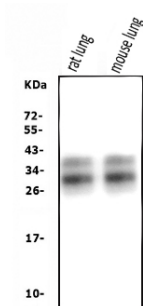
Product Name	Anti-SFTPA1 Antibody Picoband®
Reactive Species	Mouse, Rat
Description	Boster Bio Anti-SFTPA1 Antibody catalog # PA1458. Tested in IHC, WB applications. This antibody reacts with Mouse, Rat. The brand Picoband indicates this is a premium antibody that guarantees superior quality, high affinity, and strong signals with minimal background in Western blot applications. Only our best-performing antibodies are designated as Picoband, ensuring unmatched performance.
Application	IHC, WB
Clonality	Polyclonal
Formulation	Each vial contains antibody formulated with stabilizing components, 0.9mg NaCl, 0.2mg Na <sub>2</sub> HPO <sub>4</sub> , 0.05mg Thimerosal, 0.05mg NaN <sub>3</sub> . *This antibody is supplied in a stabilized formulation. Compatibility with conjugation reactions depends on the chemistry of the conjugation method used. For conjugation methods that are not compatible with the stabilizing components present in this formulation, a carrier-free antibody format is required.
Storage Instructions	Store at -20°C for one year from date of receipt. After reconstitution, at 4°C for one month. It can also be aliquotted and stored frozen at -20°C for six months. Avoid repeated freeze-thaw cycles.
Host	Rabbit
Uniprot ID	P35242

### Technical Details

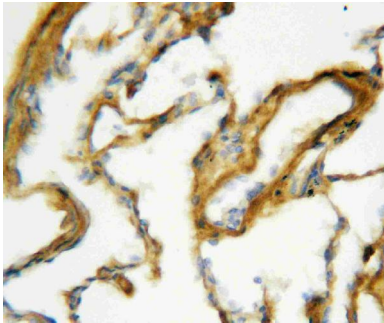
Immunogen	A synthetic peptide corresponding to a sequence at the C-terminus of mouse SFTPA1, identical to the related rat sequence.
Recommended Detection Systems	Boster recommends Enhanced Chemiluminescent Kit with anti-Rabbit IgG (EK1002) for Western blot, and HRP Conjugated anti-Rabbit IgG Super Vision Assay Kit (SV0002-1) for IHC(P).
Cross Reactivity	No cross-reactivity with other proteins
Isotype	Rabbit IgG

Form	Lyophilized
Concentration	Adding 0.2 ml of distilled water will yield a concentration of 500 ug/ml.
Purification	Immunogen affinity purified.
Suggested Dilutions	Immunohistochemistry (Paraffin-embedded Section), 0.5-1ug/ml, Rat, Mouse Western blot, 0.1-0.5ug/ml, Mouse, Rat

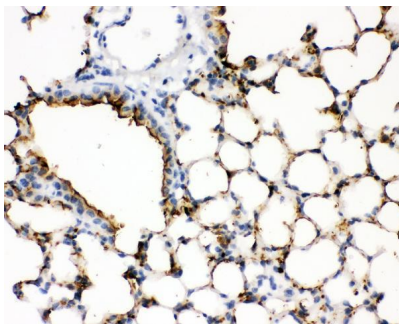
## Anti-SFTP1 Antibody Picoband® (PA1458) Images



Western blot analysis of SFTP1 using anti-SFTP1 antibody (PA1458). Electrophoresis was performed on a 5-20% SDS-PAGE gel at 70V (Stacking gel) / 90V (Resolving gel) for 2-3 hours. The sample well of each lane was loaded with 30 ug of sample under reducing conditions. Lane 1: rat lung tissue lysates, Lane 2: mouse lung tissue lysates. After electrophoresis, proteins were transferred to a nitrocellulose membrane at 150 mA for 50-90 minutes. Blocked the membrane with 5% non-fat milk/TBS for 1.5 hour at RT. The membrane was incubated with rabbit anti-SFTP1 antigen affinity purified polyclonal antibody (Catalog # PA1458) at 0.5 ug/mL overnight at 4°C, then washed with TBS-0.1%Tween 3 times with 5 minutes each and probed with a goat anti-rabbit IgG-HRP secondary antibody at a dilution of 1:5000 for 1.5 hour at RT. The signal is developed using an Enhanced Chemiluminescent detection (ECL) kit (Catalog # EK1002) with Tanon 5200 system. A specific band was detected for SFTP1 at approximately 26-35 kDa. The expected band size for SFTP1 is at 26 kDa.



IHC analysis of SFTP1 using anti-SFTP1 antibody (PA1458). SFTP1 was detected in paraffin-embedded section of rat lung tissues. Heat mediated antigen retrieval was performed in citrate buffer (pH6, epitope retrieval solution) for 20 mins. The tissue section was blocked with 10% goat serum. The tissue section was then incubated with 1ug/ml rabbit anti-SFTP1 Antibody (PA1458) overnight at 4°C. Biotinylated goat anti-rabbit IgG was used as secondary antibody and incubated for 30 minutes at 37°C. The tissue section was developed using Streptavidin-Biotin-Complex (SABC)(Catalog # SA1022) with DAB as the chromogen.



IHC analysis of SFTP1 using anti-SFTP1 antibody (PA1458). SFTP1 was detected in paraffin-embedded section of mouse lung tissues. Heat mediated antigen retrieval was performed in citrate buffer (pH6, epitope retrieval solution) for 20 mins. The tissue section was blocked with 10% goat serum. The tissue section was then incubated with 1ug/ml rabbit anti-SFTP1 Antibody (PA1458) overnight at 4°C. Biotinylated goat anti-rabbit IgG was used as secondary antibody and incubated for 30 minutes at 37°C. The tissue section was developed using Streptavidin-Biotin-Complex (SABC)(Catalog # SA1022) with DAB as the chromogen.

### 3 Publications Citing This Product

1. PubMed ID: 23671638, Wu Y, You H, Ma P, Li L, Yuan Y, Li J, Ye X, Liu X, Yao H, Chen R, Lai K, Yang X. Plos One. 2013 May 9;8(5):E62827. Doi: 10.1371/Journal.Pone.0062827. Print 2013. Role Of Transient Receptor Potential Ion Channels And Evoked Levels Of Neuropeptides...
2. PubMed ID: 24596465, Alterations in the endometrium of rats, rabbits, and Macaca mulatta that received an implantation of copper/low-

density polyethylene nanocomposite

3. PubMed ID: 26640562, Effects of bone marrow-derived mesenchymal stem cells transfected with survivin on pulmonary fibrosis in mice

Visit [bosterbio.com/anti-sftpa1-antibody-pa1458-boster.html](http://bosterbio.com/anti-sftpa1-antibody-pa1458-boster.html) to see all 3 publications.

## Submit a product review to Biocompare.com

Submit a review of this product to Biocompare.com to receive a \$20 Amazon.com giftcard! Your reviews help your fellow scientists make the right decisions. Thank you for your contribution.



### Anti-SFTPA1 Antibody

For Research Use Only. Not for use in diagnostic procedures.