

Anti-DKK1 Antibody

Catalog Number: PA1462

About DKK1

DKK1, Dickkopf-related protein 1, is a protein that in humans is encoded by the DKK1 gene. This gene encodes a protein that is a member of the dickkopf family. By genomic sequence analysis, determined that the DKK1 gene contains 4 exons. The DKK1 gene is mapped to 10q11.2 using FISH. It is a secreted protein with two cysteine rich regions and is involved in embryonic development through its inhibition of the WNT signaling pathway. Elevated levels of DKK1 in bone marrow plasma and peripheral blood is associated with the presence of osteolytic bone lesions in patients with multiple myeloma.

Overview

Product Name	Anti-DKK1 Antibody
Reactive Species	Human, Mouse, Rat
Description	Rabbit IgG polyclonal antibody for Dickkopf-related protein 1(DKK1) detection. Tested with WB in Human;Mouse;Rat.
Application	WB
Clonality	Polyclonal
Formulation	Each vial contains 5mg BSA, 0.9mg NaCl, 0.2mg Na ₂ HPO ₄ , 0.05mg Thimerosal, 0.05mg NaN ₃ .
Storage Instructions	At -20°C for one year. After reconstitution, at 4°C for one month. It can also be aliquotted and stored frozen at -20°C for a longer time. Avoid repeated freezing and thawing.
Host	Rabbit
Uniprot ID	O94907

Technical Details

Immunogen	A synthetic peptide corresponding to a sequence at the N-terminus of human DKK1(68-83aa YPGGNKYQTIDNYQPY), different from the related mouse and rat sequences by two amino acids.
-----------	---

Predicted Reactive Species	Chicken
Recommended Detection Systems	Boster recommends Enhanced Chemiluminescent Kit with anti-Rabbit IgG (EK1002) for Western blot.
Cross Reactivity	No cross reactivity with other proteins
Isotype	N/A
Form	Lyophilized
Concentration	Add 0.2ml of distilled water will yield a concentration of 500ug/ml.
Purification	Immunogen affinity purified.
Suggested Dilutions	Western blot, 0.1-0.5µg/ml, Human, Mouse, Rat
For protocols please visit https://www.bosterbio.com/protocol-and-troubleshooting/	

Anti-DKK1 Antibody (PA1462) Images

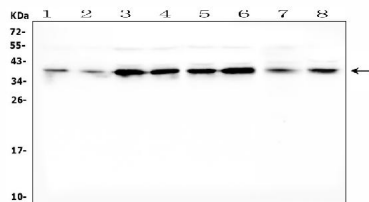


Figure 1. Western blot analysis of DKK1 using anti-DKK1 antibody (PA1462).

Electrophoresis was performed on a 5-20% SDS-PAGE gel at 70V (Stacking gel) / 90V (Resolving gel) for 2-3 hours. The sample well of each lane was loaded with 50ug of sample under reducing conditions.

Lane 1: human placenta tissue lysates,
Lane 2: human A431 whole cell lysates,
Lane 3: human Hela whole cell lysates,
Lane 4: human PC-3 whole cell lysates,
Lane 5: human Caco-2 whole cell lysates,
Lane 6: human A549 whole cell lysates,
Lane 7: rat spleen tissue lysates,
Lane 8: mouse thymus tissue lysates.

After Electrophoresis, proteins were transferred to a Nitrocellulose membrane at 150mA for 50-90 minutes. Blocked the membrane with 5% Non-fat Milk/ TBS for 1.5 hour at RT. The membrane was incubated with rabbit anti-DKK1 antigen affinity purified polyclonal antibody (Catalog # PA1462) at 0.5 µg/mL overnight at 4°C, then washed with TBS-0.1%Tween 3 times with 5 minutes each and probed with a goat anti-rabbit IgG-HRP secondary antibody at a dilution of 1:10000 for 1.5 hour at RT. The signal is developed using an Enhanced Chemiluminescent detection (ECL) kit (Catalog # EK1002) with Tanon 5200 system. A specific band was detected for DKK1 at approximately 39KD.

The expected band size for DKK1 is at 29KD.

Submit a product review to Biocompare.com

Submit a review of this product to Biocompare.com to receive a \$20 Amazon giftcard! Your reviews help your fellow scientists make the right decisions. Thank you for your contribution.

