

Anti-GPR2/CCR10 Antibody Picoband®

Catalog Number: PA1491

About CCR10

CCR10, C-C chemokine receptor type 10 is a protein that in humans is encoded by the CCR10 gene. CCR10 is constitutively expressed in skin melanocytes, fibroblasts, and microvascular endothelial cells, and that it is upregulated by IL1B and TNF. Expression was also detected in T cells, Langerhans cells, and peripheral blood mononuclear cells but not in dendritic cells. By fluorescence in situ hybridization, the GPR2 gene is mapped to 17q21.1-q21.3. CCR10 is the receptor for CCL27. CCR10-CCL27 interactions are involved in T cell-mediated skin inflammation. Expression of CCL27 in normal keratinocytes and its strong upregulation in skin lesions of atopic dermatitis, contact dermatitis, and psoriasis patients. CCR10+ T lymphocytes were detected in lesional but not normal skin of these patients. Flow cytometric analysis showed that CCL27 binds extracellular matrix components and dermal microvascular endothelial cells and fibroblasts and mediates adhesion and transendothelial migration of CCR10+ circulating leukocytes. CCR10 is predominantly expressed on CD4+CLA+ (cutaneous lymphocyte antigen), rather than CD8+, circulating T cells. RT-PCR, confocal microscopy, and ELISA analysis indicated that keratinocytes exposed to TNF or IL1B but not to IL4 or IFNG in vitro express increased CCL27.

Overview

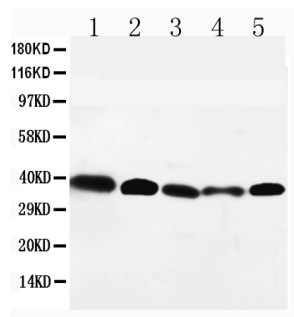
Product Name	Anti-GPR2/CCR10 Antibody Picoband®
Reactive Species	Human, Mouse, Rat
Description	Boster Bio Anti-GPR2/CCR10 Antibody catalog # PA1491. Tested in WB applications. This antibody reacts with Human, Mouse, Rat. The brand Picoband indicates this is a premium antibody that guarantees superior quality, high affinity, and strong signals with minimal background in Western blot applications. Only our best-performing antibodies are designated as Picoband, ensuring unmatched performance.
Application	WB
Clonality	Polyclonal
Formulation	Each vial contains antibody formulated with stabilizing components, 0.9mg NaCl, 0.2mg Na2HPO4, 0.05mg Thimerosal, 0.05mg NaN3. *This antibody is supplied in a stabilized formulation. Compatibility with conjugation reactions depends on the chemistry of the conjugation method used. For conjugation methods that are not compatible with the stabilizing components present in this formulation, a carrier-free antibody format is required.
Storage Instructions	Store at -20°C for one year from date of receipt. After reconstitution, at 4°C for one month. It can also be aliquotted and stored frozen at -20°C for six months. Avoid repeated freeze-thaw cycles.
Host	Rabbit
Uniprot ID	P46092

Technical Details

--	--

Immunogen	A synthetic peptide corresponding to a sequence at the C-terminus of human GPR2/CCR10, different from the related rat and mouse sequences by one amino acid.
Recommended Detection Systems	Boster recommends Enhanced Chemiluminescent Kit with anti-Rabbit IgG (EK1002) for Western blot.
Cross Reactivity	No cross-reactivity with other proteins
Isotype	Rabbit IgG
Form	Lyophilized
Concentration	Adding 0.2 ml of distilled water will yield a concentration of 500 ug/ml.
Purification	Immunogen affinity purified.
Suggested Dilutions	Western blot, 0.1-0.5ug/ml, Human, Rat, Mouse

Anti-GPR2/CCR10 Antibody Picoband® (PA1491) Images



Anti-GPR2/CCR10 antibody, PA1491, Western blotting
Lane 1: HELA Cell Lysate
Lane 2: SW620 Cell Lysate
Lane 3: A549 Cell Lysate
Lane 4: MM231 Cell Lysate
Lane 5: SMMC Cell Lysate

Submit a product review to Biocompare.com

Submit a review of this product to Biocompare.com to receive a \$20 Amazon.com giftcard! Your reviews help your fellow scientists make the right decisions. Thank you for your contribution.



Anti-GPR2/CCR10 Antibody

For Research Use Only. Not for use in diagnostic procedures.