

Anti-Ribonuclease A/RNASE1 Antibody Picoband®

Catalog Number: PA1507

About RNASE1

RIBONUCLEASE A FAMILY, 1 (Ribonuclease pancreatic) is an enzyme that in humans is encoded by the RNASE1 gene. By genomic sequence analysis, RNASE1 gene is mapped to chromosome 14q11.2, where it is linked to 7 other RNase A superfamily genes. Monomeric human pancreatic RNase, devoid of any biological activity other than its RNA degrading ability, was engineered into a dimeric protein with a cytotoxic action on mouse and human tumor cells, but lacking any appreciable toxicity on mouse and human normal cells. This dimeric variant of human pancreas RNase selectively sensitizes to apoptotic death cells derived from a human thyroid tumor. Because of its selectivity for tumor cells, and because of its human origin, this protein represents a potentially very attractive, novel tool for anticancer therapy.

Overview

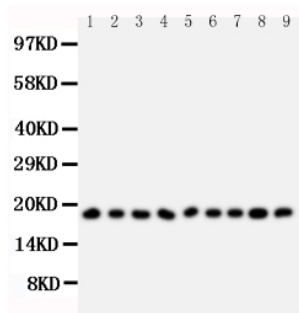
Product Name	Anti-Ribonuclease A/RNASE1 Antibody Picoband®
Reactive Species	Human
Description	Boster Bio Anti-Ribonuclease A/RNASE1 Antibody catalog # PA1507. Tested in WB applications. This antibody reacts with Human. The brand Picoband indicates this is a premium antibody that guarantees superior quality, high affinity, and strong signals with minimal background in Western blot applications. Only our best-performing antibodies are designated as Picoband, ensuring unmatched performance.
Application	WB
Clonality	Polyclonal
Formulation	Each vial contains antibody formulated with stabilizing components, 0.9mg NaCl, 0.2mg Na ₂ HPO ₄ , 0.05mg Thimerosal, 0.05mg NaN ₃ . *This antibody is supplied in a stabilized formulation. Compatibility with conjugation reactions depends on the chemistry of the conjugation method used. For conjugation methods that are not compatible with the stabilizing components present in this formulation, a carrier-free antibody format is required.
Storage Instructions	Store at -20°C for one year from date of receipt. After reconstitution, at 4°C for one month. It can also be aliquotted and stored frozen at -20°C for six months. Avoid repeated freeze-thaw cycles.
Host	Rabbit
Uniprot ID	P07998

Technical Details

Immunogen	A synthetic peptide corresponding to a sequence in the middle region of human Ribonuclease A.
Recommended Detection Systems	Boster recommends Enhanced Chemiluminescent Kit with anti-Rabbit IgG (EK1002) for Western blot.

Cross Reactivity	No cross-reactivity with other proteins
Isotype	Rabbit IgG
Form	Lyophilized
Concentration	Adding 0.2 ml of distilled water will yield a concentration of 500 ug/ml.
Purification	Immunogen affinity purified.
Suggested Dilutions	Western blot, 0.1-0.5ug/ml, Human

Anti-Ribonuclease A/RNASE1 Antibody Picoband® (PA1507) Images



Anti-Ribonuclease A antibody, PA1507, Western blotting
All lanes: Anti Ribonuclease A (PA1507) at 0.5ug/ml
Lane 1: MCF-7 Whole Cell Lysate at 40ug
Lane 2: U87 Whole Cell Lysate at 40ug
Lane 3: HELA Whole Cell Lysate at 40ug
Lane 4: MM231 Whole Cell Lysate at 40ug
Lane 5: JURKAT Whole Cell Lysate at 40ug
Lane 6: SMMC Whole Cell Lysate at 40ug
Lane 7: COLO320 Whole Cell Lysate at 40ug
Lane 8: SW620 Whole Cell Lysate at 40ug
Lane 9: CEM Whole Cell Lysate at 40ug
Predicted bind size: 18KD
Observed bind size: 18KD

Submit a product review to Biocompare.com

Submit a review of this product to Biocompare.com to receive a \$20 Amazon.com giftcard! Your reviews help your fellow scientists make the right decisions. Thank you for your contribution.



Anti-Ribonuclease A/RNASE1 Antibody

For Research Use Only. Not for use in diagnostic procedures.