

Anti-Caspase-10/CASP10 Antibody

Catalog Number: PA1513

About CASP10

Caspase-10 is an enzyme that, in humans, is encoded by the CASP10 gene. The Caspase 10 gene contains 11 exons and spans about 48 kb. This gene is mapped to 2q33.1. It is transcribed in the centromere-to-telomere direction. This gene encodes a protein that is a member of the cysteine-aspartic acid protease (caspase) family. Sequential activation of caspases plays a central role in the execution-phase of cell apoptosis. Caspases exist as inactive proenzymes that undergo proteolytic processing at conserved aspartic residues to produce two subunits, large and small, that dimerize to form the active enzyme. This protein cleaves and activates caspases 3 and 7, and the protein itself is processed by caspase 8. Mutations in this gene are associated with apoptosis defects seen in type II autoimmune lymphoproliferative syndrome. Three alternatively spliced transcript variants encoding different isoforms have been described for this gene.

Overview

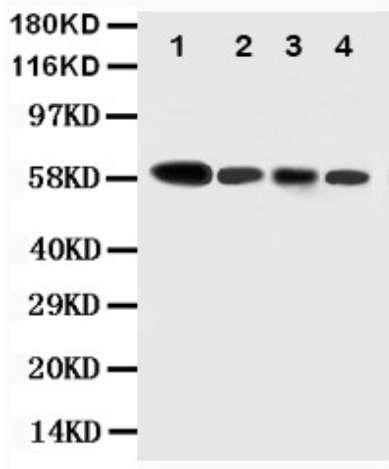
Product Name	Anti-Caspase-10/CASP10 Antibody
Reactive Species	Human
Description	Rabbit IgG polyclonal antibody for Caspase-10(CASP10) detection. Tested with WB, IHC-P in Human.
Application	IHC, WB
Clonality	Polyclonal
Formulation	Each vial contains 5mg BSA, 0.9mg NaCl, 0.2mg Na ₂ HPO ₄ , 0.05mg Thimerosal, 0.05mg NaN ₃ .
Storage Instructions	At -20°C for one year. After reconstitution, at 4°C for one month. It can also be aliquotted and stored frozen at -20°C for a longer time. Avoid repeated freezing and thawing.
Host	Rabbit
Uniprot ID	Q92851

Technical Details

Immunogen	A synthetic peptide corresponding to a sequence at the N-terminus of human
-----------	----------------------------------------------------------------------------

	CASP10(220-236aa VKTFLEALPRAAVYRMN).
Recommended Detection Systems	Boster recommends Enhanced Chemiluminescent Kit with anti-Rabbit IgG (EK1002) for Western blot, and HRP Conjugated anti-Rabbit IgG Super Vision Assay Kit (SV0002-1) for IHC(P).
Cross Reactivity	No cross reactivity with other proteins
Isotype	N/A
Form	Lyophilized
Concentration	Add 0.2ml of distilled water will yield a concentration of 500ug/ml.
Purification	Immunogen affinity purified.
Suggested Dilutions	Immunohistochemistry(Paraffin-embedded Section), 0.5-1µg/ml, Human, By Heat Western blot, 0.1-0.5µg/ml, Human
	For protocols please visit https://www.bosterbio.com/protocol-and-troubleshooting/

Anti-Caspase-10/CASP10 Antibody (PA1513) Images



Anti-Caspase-10 antibody, PA1513, Western blotting

Lane 1: COLO320 Cell Lysate

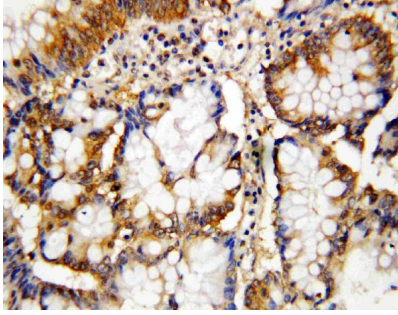
Lane 2: HELA Cell Lysate

Lane 3: SW620 Cell Lysate

Lane 4: RAJI Cell Lysate

Anti-Caspase-10 antibody, PA1513, IHC(P)

IHC(P): Human Intestinal Cancer Tissue



Submit a product review to Biocompare.com

Submit a review of this product to Biocompare.com to receive a \$20 Amazon giftcard! Your reviews help your fellow scientists make the right decisions. Thank you for your contribution.

