

Anti-hCG receptor/LHCGR Antibody

Catalog Number: PA1552

About LHCGR

The luteinizing hormone/choriogonadotropin receptor is a member of a subfamily of G protein-coupled receptors (GPCR) characterized by the presence of a large N-terminal extracellular domain containing several leucine-rich repeats (LRR). This glycoprotein hormone receptor family has been named the LRR-containing GPCR (LGR) family. The LHCGR gene contains 11 exons and spans approximately 80 kb and it is mapped to chromosome 2p21. In the ovary, theca, stromal, late-stage (luteinizing) granulosa, and luteal cells contain LHCGR. In the testes, Leydig cells contain LHCGR.

Overview

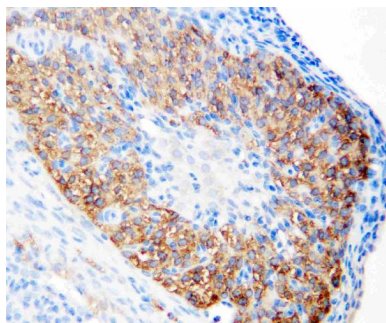
Product Name	Anti-hCG receptor/LHCGR Antibody
Reactive Species	Human, Rat
Description	Boster Bio Anti-hCG receptor/LHCGR Antibody catalog # PA1552. Tested in IHC, WB applications. This antibody reacts with Human, Rat.
Application	IHC, WB
Clonality	Polyclonal
Formulation	Each vial contains 5mg BSA, 0.9mg NaCl, 0.2mg Na ₂ HPO ₄ , 0.05mg Thimerosal, 0.05mg NaN ₃ .
Storage Instructions	Store at -20°C for one year from date of receipt. After reconstitution, at 4°C for one month. It can also be aliquotted and stored frozen at -20°C for six months. Avoid repeated freeze-thaw cycles.
Host	Rabbit
Uniprot ID	P22888

Technical Details

Immunogen	A synthetic peptide corresponding to a sequence at the N-terminus of human hCG receptor, different from the relative rat sequence by two amino acids, mouse sequence by three amino acids.
Predicted Reactive Species	Canine, Horse, Monkey
Recommended Detection Systems	Boster recommends Enhanced Chemiluminescent Kit with anti-Rabbit IgG (EK1002) for Western blot, and HRP Conjugated anti-Rabbit IgG Super Vision Assay Kit (SV0002-1) for IHC(P).
Cross Reactivity	No cross-reactivity with other proteins
Isotype	Rabbit IgG
Form	Lyophilized
Concentration	Adding 0.2 ml of distilled water will yield a concentration of 500 ug/ml.

Purification	Immunogen affinity purified.
Suggested Dilutions	<p>Dilute the sample so that the expected range of concentrations fall within the detection range of this kit.</p> <p>If the expected range of concentration is unknown, a pilot test should be conducted to decide the optimal dilution ratio for your samples.</p> <p>Some PubMed article(s) citing the expression level of this target are as follows:</p> <p>Boster Bio's internal QC testing used:</p> <p>Immunohistochemistry (Paraffin-embedded Section), 0.5-1ug/ml, Rat, Human , By Heat</p> <p>Western blot, 0.1-0.5ug/ml, Human, Rat</p>

Anti-hCG receptor/LHCGR Antibody (PA1552) Images



Anti-hCG receptor antibody, PA1552, IHC(P)
IHC(P): Rat Ovary Tissue



Anti-hCG receptor antibody, PA1552, Western blotting
All lanes: Anti hCG receptor (PA1552) at 0.5ug/ml
WB: MCF-7 Whole Cell Lysate at 40ug
Predicted bind size: 78KD
Observed bind size: 78KD

1 Publications Citing This Product

1. PubMed ID: 26010950, Evaluation of Follicular Synchronization Caused by Estrogen Administration and Its Reproductive Outcome

Visit bosterbio.com/anti-hcg-receptor-antibody-pa1552-boster.html to see all 1 publications.

Submit a product review to Biocompare.com

Submit a review of this product to Biocompare.com to receive a \$20 Amazon.com giftcard! Your reviews help your fellow scientists make the right decisions. Thank you for your contribution.



Anti-hCG receptor/LHCGR Antibody