

Anti-Cullin 1/Cul1 Antibody Picoband®

Catalog Number: PA1557

About CUL1

Cullin 1, also known as CUL1, is a human protein and gene from cullin family. This protein plays an important role in protein degradation and protein ubiquitination. This is an essential component of the SCF (SKP1-CUL1-F-box protein) E3 ubiquitin ligase complex, which mediates the ubiquitination of proteins involved in cell cycle progression, signal transduction and transcription. Human cullin 1, but not the other closely related cullins 2, 3, 4A, and 5, selectively interacts with human SKP1.

Overview

Product Name	Anti-Cullin 1/Cul1 Antibody Picoband®
Reactive Species	Human, Mouse, Rat
Description	Boster Bio Anti-Cullin 1/Cul1 Antibody catalog # PA1557. Tested in IHC, WB applications. This antibody reacts with Human, Mouse, Rat. The brand Picoband indicates this is a premium antibody that guarantees superior quality, high affinity, and strong signals with minimal background in Western blot applications. Only our best-performing antibodies are designated as Picoband, ensuring unmatched performance.
Application	IHC, WB
Clonality	Polyclonal
Formulation	Each vial contains antibody formulated with stabilizing components, 0.9mg NaCl, 0.2mg Na2HPO4, 0.05mg Thimerosal, 0.05mg NaN3. *This antibody is supplied in a stabilized formulation. Compatibility with conjugation reactions depends on the chemistry of the conjugation method used. For conjugation methods that are not compatible with the stabilizing components present in this formulation, a carrier-free antibody format is required.
Storage Instructions	Store at -20°C for one year from date of receipt. After reconstitution, at 4°C for one month. It can also be aliquotted and stored frozen at -20°C for six months. Avoid repeated freeze-thaw cycles.
Host	Rabbit
Uniprot ID	Q13616

Technical Details

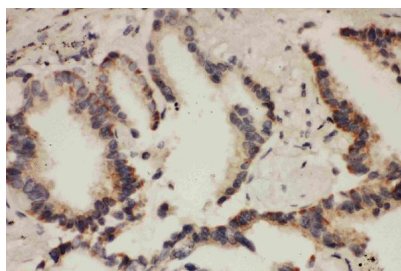
Immunogen	A synthetic peptide corresponding to a sequence at the N-terminus of human Cullin 1, identical to the related mouse and rat sequences.
Recommended Detection Systems	Boster recommends Enhanced Chemiluminescent Kit with anti-Rabbit IgG (EK1002) for Western blot, and HRP Conjugated anti-Rabbit IgG Super Vision Assay Kit (SV0002-1) for IHC(P).
Cross Reactivity	No cross-reactivity with other proteins

Isotype	Rabbit IgG
Form	Lyophilized
Concentration	Adding 0.2 ml of distilled water will yield a concentration of 500 ug/ml.
Purification	Immunogen affinity purified.
Suggested Dilutions	Immunohistochemistry (Paraffin-embedded Section), 0.5-1ug/ml, Human, Mouse, Rat Western blot, 0.1-0.5ug/ml, Human, Mouse, Rat

Anti-Cullin 1/Cul1 Antibody Picoband® (PA1557) Images



Anti-Cullin 1 antibody, PA1557, Western blotting All lanes:
Anti Cullin 1 (PA1557) at 0.5ug/ml Lane 1: MM453 Whole Cell
Lysate at 40ug Lane 2: HT1080 Whole Cell Lysate at
40ug Lane 3: SMMC Whole Cell Lysate at 40ug Predicted bind
size: 90 K D Observed bind size: 90 K D



Anti-Cullin 1 antibody, PA1557, IHC(P) IHC(P): Human Lung
Cancer Tissue

Submit a product review to Biocompare.com

Submit a review of this product to Biocompare.com to receive a \$20 Amazon.com giftcard! Your reviews help your fellow scientists make the right decisions. Thank you for your contribution.



Anti-Cullin 1/Cul1 Antibody

For Research Use Only. Not for use in diagnostic procedures.