

## Anti-SCF/KITLG Antibody Picoband®

Catalog Number: PA1565

### About KITLG

Stem Cell Factor (also known as SCF, kit-ligand, KL, or steel factor) is a cytokine that binds to the c-Kit receptor (CD117). SCF can exist both as a transmembrane protein and a soluble protein. SCF is localized to the long arm of human chromosome 12, between 12q14.3 and 12qter. SCF plays a role in the regulation of HSCs in the stem cell niche in the bone marrow. SCF has been shown to increase the survival of HSCs in vitro and contributes to the self renewal and maintenance of HSCs in-vivo. HSCs at all stages of development express the same levels of the receptor for SCF (c-Kit). The stromal cells that surround HSCs are a component of the stem cell niche, and they release a number of ligands, including SCF.

### Overview

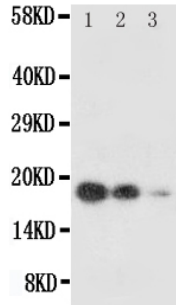
Product Name	Anti-SCF/KITLG Antibody Picoband®
Reactive Species	Human
Description	Boster Bio Anti-SCF/KITLG Antibody catalog # PA1565. Tested in IHC, WB applications. This antibody reacts with Human. The brand Picoband indicates this is a premium antibody that guarantees superior quality, high affinity, and strong signals with minimal background in Western blot applications. Only our best-performing antibodies are designated as Picoband, ensuring unmatched performance.
Application	IHC, WB
Clonality	Polyclonal
Formulation	Each vial contains antibody formulated with stabilizing components, 0.9mg NaCl, 0.2mg Na <sub>2</sub> HPO <sub>4</sub> , 0.05mg Thimerosal, 0.05mg NaN <sub>3</sub> . *This antibody is supplied in a stabilized formulation. Compatibility with conjugation reactions depends on the chemistry of the conjugation method used. For conjugation methods that are not compatible with the stabilizing components present in this formulation, a carrier-free antibody format is required.
Storage Instructions	Store at -20°C for one year from date of receipt. After reconstitution, at 4°C for one month. It can also be aliquotted and stored frozen at -20°C for six months. Avoid repeated freeze-thaw cycles.
Host	Rabbit
Uniprot ID	P21583

### Technical Details

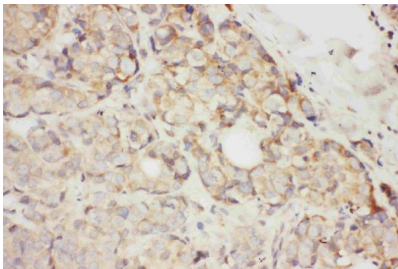
Immunogen	A synthetic peptide corresponding to a sequence at the N-terminus of human SCF.
Recommended Detection Systems	Boster recommends Enhanced Chemiluminescent Kit with anti-Rabbit IgG (EK1002) for Western blot, and HRP Conjugated anti-Rabbit IgG Super Vision Assay Kit (SV0002-1) for IHC(P).
Cross Reactivity	No cross-reactivity with other proteins

Isotype	Rabbit IgG
Form	Lyophilized
Concentration	Adding 0.2 ml of distilled water will yield a concentration of 500 ug/ml.
Purification	Immunogen affinity purified.
Suggested Dilutions	Immunohistochemistry (Paraffin-embedded Section), 0.5-1ug/ml, Human Western blot, 0.1-0.5ug/ml, Human

## Anti-SCF/KITLG Antibody Picoband® (PA1565) Images



Anti-SCF antibody, PA1565, Western blotting All lanes: Anti SCF (PA1565) at 0.5ug/ml Lane 1: Recombinant Human SCF Protein 10ng Lane 2: Recombinant Human SCF Protein 5ng Lane 3: Recombinant Human SCF Protein 2.5ng Predicted bind size: 18.4KD Observed bind size: 18.4KD



Anti-SCF antibody, PA1565, IHC(P) IHC(P): Human Mammary Cancer Tissue

## 2 Publications Citing This Product

1. PubMed ID: 28033308, Effects of Polysaccharide of Gastrodia Elata Blume and Electro-Acupuncture on Expressions of Brain-Derived Neurotrophic Factor and Stem Cell Factor Protein in Caudate Putamen of Focal Cerebral Ischemia Rats

2. PubMed ID: 29246405, Selective tropism of liver stem cells to hepatocellular carcinoma in vivo.

Visit [bosterbio.com/anti-scf-antibody-pa1565-boster.html](http://bosterbio.com/anti-scf-antibody-pa1565-boster.html) to see all 2 publications.

## Submit a product review to Biocompare.com

Submit a review of this product to Biocompare.com to receive a \$20 Amazon.com giftcard! Your reviews help your fellow scientists make the right decisions. Thank you for your contribution.



Anti-SCF/KITLG Antibody

For Research Use Only. Not for use in diagnostic procedures.