

Anti-Eph receptor A1/EPHA1 Antibody Picoband®

Catalog Number: PA1573

About EPHA1

EPHA1, EPH receptor A1, is a protein that in humans is encoded by the EPHA1 gene. This gene belongs to the ephrin receptor subfamily of the protein-tyrosine kinase family. The EPHA1 gene is mapped to 7q34-q35. EPH and EPH-related receptors have been implicated in mediating developmental events, particularly in the nervous system. Receptors in the EPH subfamily typically have a single kinase domain and an extracellular region containing a Cys-rich domain and 2 fibronectin type III repeats. The ephrin receptors are divided into 2 groups based on the similarity of their extracellular domain sequences and their affinities for binding ephrin-A and ephrin-B ligands. This gene is expressed in some human cancer cell lines and has been implicated in carcinogenesis.

Overview

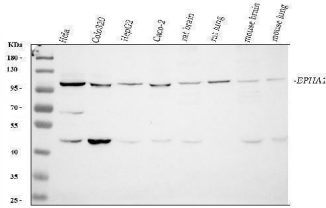
Product Name	Anti-Eph receptor A1/EPHA1 Antibody Picoband®
Reactive Species	Human, Mouse, Rat
Description	Boster Bio Anti-Eph receptor A1/EPHA1 Antibody catalog # PA1573. Tested in IHC, WB applications. This antibody reacts with Human, Mouse, Rat. The brand Picoband indicates this is a premium antibody that guarantees superior quality, high affinity, and strong signals with minimal background in Western blot applications. Only our best-performing antibodies are designated as Picoband, ensuring unmatched performance.
Application	IHC, WB
Clonality	Polyclonal
Formulation	Each vial contains antibody formulated with stabilizing components, 0.9mg NaCl, 0.2mg Na ₂ HPO ₄ , 0.05mg Thimerosal, 0.05mg NaN ₃ . *This antibody is supplied in a stabilized formulation. Compatibility with conjugation reactions depends on the chemistry of the conjugation method used. For conjugation methods that are not compatible with the stabilizing components present in this formulation, a carrier-free antibody format is required.
Storage Instructions	Store at -20°C for one year from date of receipt. After reconstitution, at 4°C for one month. It can also be aliquotted and stored frozen at -20°C for six months. Avoid repeated freeze-thaw cycles.
Host	Rabbit
Uniprot ID	P21709

Technical Details

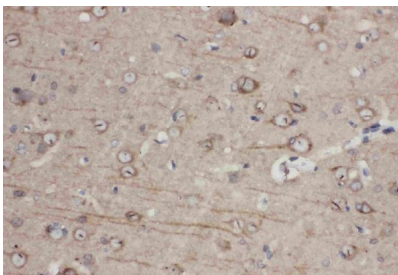
Immunogen	A synthetic peptide corresponding to a sequence at the C-terminus of human Eph receptor A1, identical to the related rat and mouse sequences.
Recommended Detection Systems	Boster recommends Enhanced Chemiluminescent Kit with anti-Rabbit IgG (EK1002) for Western blot, and HRP Conjugated anti-Rabbit IgG Super Vision Assay Kit (SV0002-1) for IHC(P).

Cross Reactivity	No cross-reactivity with other proteins
Isotype	Rabbit IgG
Form	Lyophilized
Concentration	Adding 0.2 ml of distilled water will yield a concentration of 500 ug/ml.
Purification	Immunogen affinity purified.
Suggested Dilutions	Immunohistochemistry (Paraffin-embedded Section), 0.5-1ug/ml, Human, Rat, Mouse Western blot, 0.1-0.5ug/ml, Human, Rat, Mouse

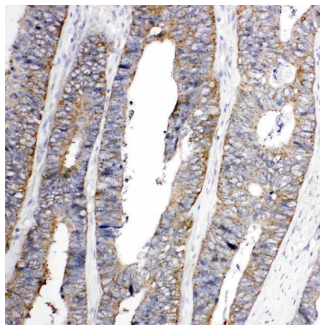
Anti-Eph receptor A1/EPHA1 Antibody Picoband® (PA1573) Images



Western blot analysis of Eph receptor A1 using anti-Eph receptor A1 antibody (PA1573). Electrophoresis was performed on a 5-20% SDS-PAGE gel at 70V (Stacking gel) / 90V (Resolving gel) for 2-3 hours. The sample well of each lane was loaded with 30 ug of sample under reducing conditions. Lane 1: human Hela whole cell lysates, Lane 2: human Colo320 whole cell lysates, Lane 3: human HepG2 whole cell lysates, Lane 4: human Caco-2 whole cell lysates, Lane 5: rat brain tissue lysates, Lane 6: rat lung tissue lysates, Lane 7: mouse brain tissue lysates, Lane 8: mouse lung tissue lysate. After electrophoresis, proteins were transferred to a nitrocellulose membrane at 150 mA for 50-90 minutes. Blocked the membrane with 5% non-fat milk/TBS for 1.5 hour at RT. The membrane was incubated with rabbit anti-Eph receptor A1 antigen affinity purified polyclonal antibody (Catalog # PA1573) at 0.5 ug/mL overnight at 4°C, then washed with TBS-0.1%Tween 3 times with 5 minutes each and probed with a goat anti-rabbit IgG-HRP secondary antibody at a dilution of 1:5000 for 1.5 hour at RT. The signal is developed using an Enhanced Chemiluminescent detection (ECL) kit (Catalog # EK1002) with Tanon 5200 system. A specific band was detected for Eph receptor A1 at approximately 113 kDa. The expected band size for Eph receptor A1 is at 108 kDa.



Anti-Eph receptor A1 antibody, PA1573, IHC(P)IHC(P): Rat Brain Tissue



Anti-Eph receptor A1 antibody, PA1573, IHC(P)IHC(P): Human Colon Cancer Tissue

1 Publications Citing This Product

1. PubMed ID: -, Bağak Büyük,Cemre Aydeğer,Yasemen Adalı et al.The Effect of Topically Applied Boric Acid on Ephrin-Eph Pathway in Wound Treatment: An Experimental Study,14 June 2021,PREPRINT (Version 1) available at Research Square [https://doi.org/10.21203/rs.3.rs-561841/v1]

Visit [bosterbio.com/anti-ephrin-receptor-a1-antibody-pa1573-boster.html](https://www.bosterbio.com/anti-ephrin-receptor-a1-antibody-pa1573-boster.html) to see all 1 publications.

Submit a product review to Biocompare.com

Submit a review of this product to Biocompare.com to receive a \$20 Amazon.com giftcard! Your reviews help your fellow scientists make the right decisions. Thank you for your contribution.



Anti-Eph receptor A1/EPHA1 Antibody

For Research Use Only. Not for use in diagnostic procedures.