

Anti-Granzyme A/GZMA Antibody

Catalog Number: PA1588

About GZMA

Granzyme A is a protein that in humans is encoded by the GZMA gene. Cytolytic T lymphocytes (CTL) and natural killer (NK) cells share the remarkable ability to recognize, bind, and lyse specific target cells. They are thought to protect their host by lysing cells bearing on their surface "nonself" antigens, usually peptides or proteins resulting from infection by intracellular pathogens. The protein described here is a T cell- and natural killer cell-specific serine protease that may function as a common component necessary for lysis of target cells by cytotoxic T lymphocytes and natural killer cells. GZMA induces caspase-independent apoptosis in a characteristic manner, except it causes a distinctive form of DNA damage: single-stranded DNA nicking. A target of GZMA is the SET complex, including HMGB2 and ANP32A.

Overview

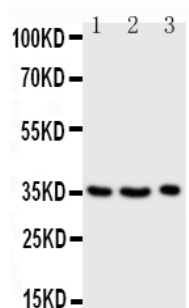
Product Name	Anti-Granzyme A/GZMA Antibody
Reactive Species	Human
Description	Boster Bio Anti-Granzyme A/GZMA Antibody catalog # PA1588. Tested in IHC, WB applications. This antibody reacts with Human.
Application	IHC, WB
Clonality	Polyclonal
Formulation	Each vial contains 5mg BSA, 0.9mg NaCl, 0.2mg Na ₂ HPO ₄ , 0.05mg Thimerosal, 0.05mg NaN ₃ .
Storage Instructions	Store at -20°C for one year from date of receipt. After reconstitution, at 4°C for one month. It can also be aliquotted and stored frozen at -20°C for six months. Avoid repeated freeze-thaw cycles.
Host	Rabbit
Uniprot ID	P12544

Technical Details

Immunogen	A synthetic peptide corresponding to a sequence in the middle region of human Granzyme A.
Predicted Reactive Species	Bovine
Recommended Detection Systems	Boster recommends Enhanced Chemiluminescent Kit with anti-Rabbit IgG (EK1002) for Western blot, and HRP Conjugated anti-Rabbit IgG Super Vision Assay Kit (SV0002-1) for IHC(P).
Cross Reactivity	No cross-reactivity with other proteins
Isotype	Rabbit IgG
Form	Lyophilized

Concentration	Adding 0.2 ml of distilled water will yield a concentration of 500 ug/ml.
Purification	Immunogen affinity purified.
Suggested Dilutions	<p>Dilute the sample so that the expected range of concentrations fall within the detection range of this kit.</p> <p>If the expected range of concentration is unknown, a pilot test should be conducted to decide the optimal dilution ratio for your samples.</p> <p>Some PubMed article(s) citing the expression level of this target are as follows:</p> <p>Boster Bio's internal QC testing used:</p> <p>Immunohistochemistry (Paraffin-embedded Section), 0.5-1ug/ml, Human, By Heat</p> <p>Western blot, 0.1-0.5ug/ml, Human</p>

Anti-Granzyme A/GZMA Antibody (PA1588) Images

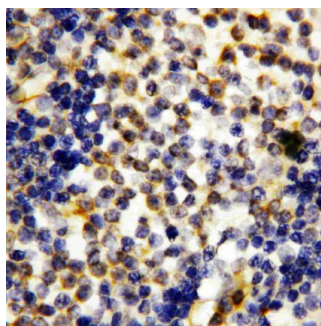


Anti-Granzyme A antibody, PA1588, Western blotting

Lane 1: JURKAT Cell Lysate

Lane 2: CEM Cell Lysate

Lane 3: RAJI Cell Lysate



Anti-Granzyme A antibody, PA1588, IHC(P)

IHC(P): Human Tonsil Tissue

Submit a product review to Biocompare.com

Submit a review of this product to Biocompare.com to receive a \$20 Amazon.com giftcard! Your reviews help your fellow scientists make the right decisions. Thank you for your contribution.



Anti-Granzyme A/GZMA Antibody