

Anti-INDOL1/IDO2 Antibody Picoband®

Catalog Number: PA1612

About IDO2

IDO2 (Indoleamine 2,3-dioxygenase 2), also called INDOLEAMINE 2,3-DIOXYGENASE-LIKE 1 or INDOL1, is an enzyme encoded by the INDOL1 gene which metabolizes tryptophan in the kynurenine pathway. By genomic sequence analysis, the INDOL1 gene is mapped on chromosome 8p12 just downstream of the INDO gene. And its exact cytogenetic location is 8p11.21. By database analysis using INDO as probe, followed by RT-PCR of total RNA from various tissues, IDO2 is cloned by human and mouse INDOL1. INDOL1 catabolizes tryptophan as determined by Kyn production, but unlike INDO, is inhibited by D-1-methyl-tryptophan (D-1MT) but not the L-1MT stereoisomer. The Gene Structure of the INDOL1 has 11 exons and spans 74 kb.

Overview

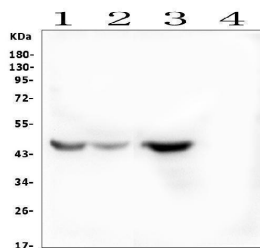
Product Name	Anti-INDOL1/IDO2 Antibody Picoband®
Reactive Species	Human
Description	Boster Bio Anti-INDOL1/IDO2 Antibody catalog # PA1612. Tested in WB applications. This antibody reacts with Human. The brand Picoband indicates this is a premium antibody that guarantees superior quality, high affinity, and strong signals with minimal background in Western blot applications. Only our best-performing antibodies are designated as Picoband, ensuring unmatched performance.
Application	WB
Clonality	Polyclonal
Formulation	Each vial contains antibody formulated with stabilizing components, 0.9mg NaCl, 0.2mg Na ₂ HPO ₄ , 0.01mg Thimerosal, 0.01mg NaN ₃ . *This antibody is supplied in a stabilized formulation. Compatibility with conjugation reactions depends on the chemistry of the conjugation method used. For conjugation methods that are not compatible with the stabilizing components present in this formulation, a carrier-free antibody format is required.
Storage Instructions	Store at -20°C for one year from date of receipt. After reconstitution, at 4°C for one month. It can also be aliquotted and stored frozen at -20°C for six months. Avoid repeated freeze-thaw cycles.
Host	Rabbit
Uniprot ID	Q6ZQW0

Technical Details

Immunogen	A synthetic peptide corresponding to a sequence at the N-terminus of human INDOL1.
Recommended Detection Systems	Boster recommends Enhanced Chemiluminescent Kit with anti-Rabbit IgG (EK1002) for Western

	blot.
Cross Reactivity	No cross-reactivity with other proteins
Isotype	Rabbit IgG
Form	Lyophilized
Concentration	Adding 0.2 ml of distilled water will yield a concentration of 500 ug/ml.
Purification	Immunogen affinity purified.
Suggested Dilutions	Western blot, 0.1-0.5ug/ml, Human

Anti-INDOL1/IDO2 Antibody Picoband® (PA1612) Images



Western blot analysis of IDO2 using anti-IDO2 antibody (PA1612). Electrophoresis was performed on a 5-20% SDS-PAGE gel at 70V (Stacking gel) / 90V (Resolving gel) for 2-3 hours. The sample well of each lane was loaded with 50ug of sample under reducing conditions. Lane 1: human A549 whole cell lysates (positive control), Lane 2: human placenta tissue lysates (positive control), Lane 3: human Caco-2 whole cell lysates (positive control), Lane 4: human PC-3 whole cell lysates (negative control). After Electrophoresis, proteins were transferred to a Nitrocellulose membrane at 150mA for 50-90 minutes. Blocked the membrane with 5% Non-fat Milk/ TBS for 1.5 hour at RT. The membrane was incubated with rabbit anti-IDO2 antigen affinity purified polyclonal antibody (Catalog # PA1612) at 0.5 ug/mL overnight at 4°C, then washed with TBS-0.1%Tween 3 times with 5 minutes each and probed with a goat anti-rabbit IgG-HRP secondary antibody at a dilution of 1:10000 for 1.5 hour at RT. The signal is developed using an Enhanced Chemiluminescent detection (ECL) kit (Catalog # EK1002) with Tanon 5200 system. A specific band was detected for IDO2 at approximately 47KD. The expected band size for IDO2 is at 47KD.

Submit a product review to [Biocompare.com](https://www.biocompare.com)

Submit a review of this product to [Biocompare.com](https://www.biocompare.com) to receive a \$20 Amazon.com giftcard! Your reviews help your fellow scientists make the right decisions. Thank you for your contribution.



Anti-INDOL1/IDO2 Antibody

For Research Use Only. Not for use in diagnostic procedures.