

Anti-IKK alpha/CHUK Antibody

Catalog Number: PA1614

About CHUK

IKBKA (INHIBITOR OF KAPPA LIGHT POLYPEPTIDE GENE ENHANCER IN B CELLS, KINASE OF, ALPHA), also called CHUK, NFKBIKA, IKKA, IKK1, I-KAPPA-B, is a protein kinase that in humans is encoded by the CHUK gene. And it is a member of the protein kinase superfamily. And the protein contains a serine/threonine kinase domain, due to its ubiquitous expression in a broad array of tissues and high degree of conservation across species. By FISH, the IKBKA gene is mapped to chromosome 10q24. Phosphorylation of serine residues on the I-kappa-B proteins by kinases (IKBKA or IKBKB) marks them for destruction via the ubiquitination pathway, thereby allowing activation of the NF-kappa-B complex. IKK-alpha is part of the I kappa B kinase complex that plays an important role in regulating the NF-kappa B transcription factor.

Overview

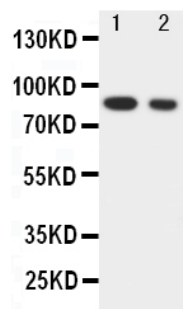
Product Name	Anti-IKK alpha/CHUK Antibody
Reactive Species	Human
Description	Boster Bio Anti-IKK alpha/CHUK Antibody catalog # PA1614. Tested in WB applications. This antibody reacts with Human.
Application	WB
Clonality	Polyclonal
Formulation	Each vial contains 5mg BSA, 0.9mg NaCl, 0.2mg Na2HPO4, 0.05mg Thimerosal, 0.05mg NaN3.
Storage Instructions	Store at -20°C for one year from date of receipt. After reconstitution, at 4°C for one month. It can also be aliquotted and stored frozen at -20°C for six months. Avoid repeated freeze-thaw cycles.
Host	Rabbit
Uniprot ID	O15111

Technical Details

Immunogen	A synthetic peptide corresponding to a sequence at the C-terminus of human IKK alpha.
Recommended Detection Systems	Boster recommends Enhanced Chemiluminescent Kit with anti-Rabbit IgG (EK1002) for Western blot.
Cross Reactivity	No cross-reactivity with other proteins
Isotype	Rabbit IgG
Form	Lyophilized
Concentration	Adding 0.2 ml of distilled water will yield a concentration of 500 ug/ml.

Purification	Immunogen affinity purified.
Suggested Dilutions	<p>Dilute the sample so that the expected range of concentrations fall within the detection range of this kit.</p> <p>If the expected range of concentration is unknown, a pilot test should be conducted to decide the optimal dilution ratio for your samples.</p> <p>Some PubMed article(s) citing the expression level of this target are as follows: Boster Bio's internal QC testing used: Western blot, 0.1-0.5ug/ml, Human</p>

Anti-IKK alpha/CHUK Antibody (PA1614) Images



Anti-IKK alpha antibody, PA1614, Western blotting
Lane 1: HELA Cell Lysate
Lane 2: JURKAT Cell Lysate

Submit a product review to Biocompare.com

Submit a review of this product to Biocompare.com to receive a \$20 Amazon.com giftcard! Your reviews help your fellow scientists make the right decisions. Thank you for your contribution.



Anti-IKK alpha/CHUK Antibody