

## Anti-IL2 Receptor beta/IL2RB Antibody Picoband®

Catalog Number: PA1615

### About IL2RB

IL2RB (INTERLEUKIN 2 RECEPTOR, BETA), also called CD122, is a protein that in humans is encoded by the IL2RB gene. The gene represents the beta subunit and is a type I membrane protein. IL2RB is mapped to 22q12.3. The IL2RB gene contains 10 exons spanning about 24.3 kb and that the gene product is encoded by exons 2-10. The IL2 receptor is present in 3 forms with respect to binding ability to IL2: high, intermediate, and low affinity forms. Analysis of mutants of the beta chain of the IL2 receptor reveals that the granulocyte and monocyte differentiation signals are triggered by different cytoplasmic domains, showing that the signaling pathways responsible for these unique developmental outcomes are separable.

### Overview

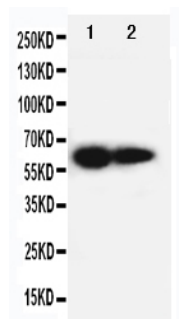
Product Name	Anti-IL2 Receptor beta/IL2RB Antibody Picoband®
Reactive Species	Human
Description	Boster Bio Anti-IL2 Receptor beta/IL2RB Antibody catalog # PA1615. Tested in WB applications. This antibody reacts with Human. The brand Picoband indicates this is a premium antibody that guarantees superior quality, high affinity, and strong signals with minimal background in Western blot applications. Only our best-performing antibodies are designated as Picoband, ensuring unmatched performance.
Application	WB
Clonality	Polyclonal
Formulation	Each vial contains antibody formulated with stabilizing components, 0.9mg NaCl, 0.2mg Na <sub>2</sub> HPO <sub>4</sub> , 0.05mg Thimerosal, 0.05mg NaN <sub>3</sub> . *This antibody is supplied in a stabilized formulation. Compatibility with conjugation reactions depends on the chemistry of the conjugation method used. For conjugation methods that are not compatible with the stabilizing components present in this formulation, a carrier-free antibody format is required.
Storage Instructions	Store at -20°C for one year from date of receipt. After reconstitution, at 4°C for one month. It can also be aliquotted and stored frozen at -20°C for six months. Avoid repeated freeze-thaw cycles.
Host	Rabbit
Uniprot ID	P14784

### Technical Details

Immunogen	A synthetic peptide corresponding to a sequence in the middle region of human IL2RB.
Recommended Detection Systems	Boster recommends Enhanced Chemiluminescent Kit with anti-Rabbit IgG (EK1002) for Western blot.

Cross Reactivity	No cross-reactivity with other proteins
Isotype	Rabbit IgG
Form	Lyophilized
Concentration	Adding 0.2 ml of distilled water will yield a concentration of 500 ug/ml.
Purification	Immunogen affinity purified.
Suggested Dilutions	Western blot, 0.1-0.5ug/ml, Human

## Anti-IL2 Receptor beta/IL2RB Antibody Picoband® (PA1615) Images



Anti-IL2RB antibody, PA1615, Western blotting  
Lane 1: PANC Cell Lysate  
Lane 2: HELA Cell Lysate

### Submit a product review to Biocompare.com

Submit a review of this product to Biocompare.com to receive a \$20 Amazon.com giftcard! Your reviews help your fellow scientists make the right decisions. Thank you for your contribution.



Anti-IL2 Receptor beta/IL2RB Antibody

For Research Use Only. Not for use in diagnostic procedures.