

Anti-IL2 Receptor gamma/IL2RG Antibody Picoband®

Catalog Number: PA1616

About IL2RG

IL2RG (INTERLEUKIN 2 RECEPTOR, GAMMA), also known as Common gamma chain or CD132, is a cytokine receptor sub-unit that is common to the receptor complexes for at least six different interleukin receptors: IL-2, IL-4, IL-7, IL-9, IL-15 and interleukin-21 receptor. IL2RG is a member of the type I cytokine receptor family expressed on most lymphocyte (white blood cell) populations, and its gene is found on the X-chromosome of mammals. By fluorescence in situ hybridization and PCR amplification of somatic cell hybrid DNAs, The IL2RG gene is mapped to Xq13.1. The IL2RG gene contains 8 exons and spans approximately 4.2 kb. And the gamma chain is an indispensable component of the functional IL2 receptor. Lymphocytes expressing the common gamma chain can form functional receptors for these cytokine proteins, which transmit signals from one cell to another and direct programs of cellular differentiation. The sharing of the gamma subunit by several receptors explains why humans and mice that lack IL2 entirely show milder symptoms than those with IL2RG deficiency.

Overview

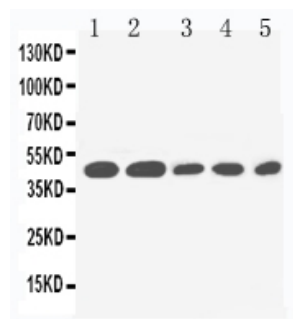
Product Name	Anti-IL2 Receptor gamma/IL2RG Antibody Picoband®
Reactive Species	Human
Description	Boster Bio Anti-IL2 Receptor gamma/IL2RG Antibody catalog # PA1616. Tested in WB applications. This antibody reacts with Human. The brand Picoband indicates this is a premium antibody that guarantees superior quality, high affinity, and strong signals with minimal background in Western blot applications. Only our best-performing antibodies are designated as Picoband, ensuring unmatched performance.
Application	WB
Clonality	Polyclonal
Formulation	Each vial contains antibody formulated with stabilizing components, 0.9mg NaCl, 0.2mg Na ₂ HPO ₄ , 0.05mg Thimerosal, 0.05mg NaN ₃ . *This antibody is supplied in a stabilized formulation. Compatibility with conjugation reactions depends on the chemistry of the conjugation method used. For conjugation methods that are not compatible with the stabilizing components present in this formulation, a carrier-free antibody format is required.
Storage Instructions	Store at -20°C for one year from date of receipt. After reconstitution, at 4°C for one month. It can also be aliquotted and stored frozen at -20°C for six months. Avoid repeated freeze-thaw cycles.
Host	Rabbit
Uniprot ID	P31785

Technical Details

Immunogen	A synthetic peptide corresponding to a sequence in the middle region of human IL2 Receptor gamma.
-----------	---

Recommended Detection Systems	Boster recommends Enhanced Chemiluminescent Kit with anti-Rabbit IgG (EK1002) for Western blot.
Cross Reactivity	No cross-reactivity with other proteins
Isotype	Rabbit IgG
Form	Lyophilized
Concentration	Adding 0.2 ml of distilled water will yield a concentration of 500 ug/ml.
Purification	Immunogen affinity purified.
Suggested Dilutions	Western blot, 0.1-0.5ug/ml, Human

Anti-IL2 Receptor gamma/IL2RG Antibody Picoband® (PA1616) Images



Anti-IL2 Receptor gamma antibody, PA1616, Western blotting
Lane 1: PANC Cell Lysate Lane 2: HELA Cell Lysate
Lane 3: JURKAT Cell Lysate Lane 4: RAJI Cell Lysate Lane 5: CEM Cell Lysate

Submit a product review to Biocompare.com

Submit a review of this product to Biocompare.com to receive a \$20 Amazon.com giftcard! Your reviews help your fellow scientists make the right decisions. Thank you for your contribution.



Anti-IL2 Receptor gamma/IL2RG Antibody

For Research Use Only. Not for use in diagnostic procedures.