

Anti-TIM 1/HAVCR1 Antibody Picoband®

Catalog Number: PA1624

About HAVCR1

KIM1 (KIDNEY INJURY MOLECULE 1), also known as HAVCR1, HAVCR or TIM1, is a protein that in humans is encoded by the KIM1 gene. The KIM1 gene is mapped to 5q33.3. Biochemical, mutational, and cell adhesion analyses confirm that Tim1 is capable of homophilic Tim-Tim interactions. The features identified in murine KIM1 is conserved in human KIM1. The KIM1 protein is indeed a receptor for the virus through the infection of canine osteogenic sarcoma cells expressing HAVCR1 with HAV. Using a monoclonal antibody to mouse Tim1, Tim1 is expressed after activation of naive T cells and on T cells differentiated in Th2-polarizing conditions. Ectopic expression of KIM1 during mouse T-cell differentiation leads to production of the Th2-type cytokine Il4, but not the Th1-type cytokine Ifng. KIM1-expressing epithelial cells internalized apoptotic bodies, and Kim1 is directly responsible for phagocytosis in cultured primary rat tubule epithelial cells and in porcine and canine epithelial cell lines.

Overview

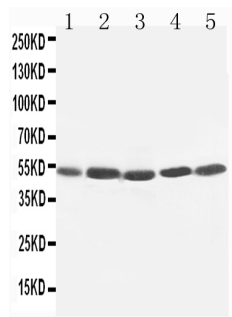
Product Name	Anti-TIM 1/HAVCR1 Antibody Picoband®
Reactive Species	Human
Description	Boster Bio Anti-TIM 1/HAVCR1 Antibody catalog # PA1624. Tested in IF, IHC, ICC, WB applications. This antibody reacts with Human. The brand Picoband indicates this is a premium antibody that guarantees superior quality, high affinity, and strong signals with minimal background in Western blot applications. Only our best-performing antibodies are designated as Picoband, ensuring unmatched performance.
Application	IF, IHC, ICC, WB
Clonality	Polyclonal
Formulation	Each vial contains antibody formulated with stabilizing components, 0.9mg NaCl, 0.2mg Na ₂ HPO ₄ , 0.05mg Thimerosal, 0.05mg NaN ₃ . *This antibody is supplied in a stabilized formulation. Compatibility with conjugation reactions depends on the chemistry of the conjugation method used. For conjugation methods that are not compatible with the stabilizing components present in this formulation, a carrier-free antibody format is required.
Storage Instructions	Store at -20°C for one year from date of receipt. After reconstitution, at 4°C for one month. It can also be aliquotted and stored frozen at -20°C for six months. Avoid repeated freeze-thaw cycles.
Host	Rabbit
Uniprot ID	Q96D42

Technical Details

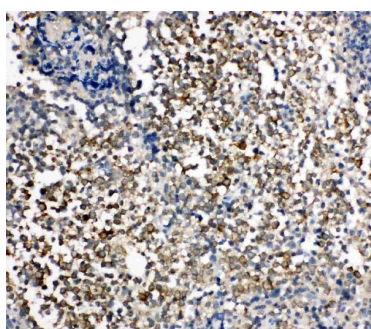
Immunogen	A synthetic peptide corresponding to a sequence at the C-terminus of human TIM 1.
Recommended Detection Systems	Boster recommends Enhanced Chemiluminescent Kit with anti-Rabbit IgG (EK1002) for Western blot, and HRP Conjugated anti-Rabbit IgG Super Vision Assay Kit (SV0002-1) for IHC(P) and ICC.

Cross Reactivity	No cross-reactivity with other proteins
Isotype	Rabbit IgG
Form	Lyophilized
Concentration	Adding 0.2 ml of distilled water will yield a concentration of 500 ug/ml.
Purification	Immunogen affinity purified.
Suggested Dilutions	Western blot, 0.1-0.5ug/ml, Human Immunohistochemistry (Paraffin-embedded Section), 0.5-1ug/ml, Human Immunocytochemistry , 0.5-1ug/ml, Human, - Immunocytochemistry/Immunofluorescence, 5 ug/ml, Human

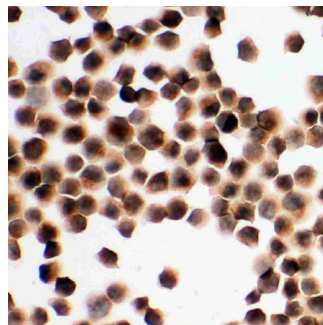
Anti-TIM 1/HAVCR1 Antibody Picoband® (PA1624) Images



Anti-TIM 1 antibody, PA1624, Western blotting
Lane 1: SMMC Cell Lysate
Lane 2: HELA Cell Lysate
Lane 3: PANC Cell Lysate
Lane 4: M231 Cell Lysate
Lane 5: M453 Cell Lysate



Anti-TIM 1 antibody, PA1624, IHC(P)
Human Tonsil Tissue



Anti-TIM 1 antibody, PA1624, ICC
K562 Cell

Submit a product review to [Biocompare.com](https://www.biocompare.com)

Submit a review of this product to [Biocompare.com](https://www.biocompare.com) to receive a \$20 Amazon.com giftcard! Your reviews help your fellow scientists make the right decisions. Thank you for your contribution.



Anti-TIM 1/HAVCR1 Antibody

For Research Use Only. Not for use in diagnostic procedures.