

Anti-Kallikrein 2/KLK2 Antibody Picoband®

Catalog Number: PA1626

About KLK2

KLK2 (KALLIKREIN 2), also called GLANDULAR or PROSTATIC, is a protein that in humans is encoded by the KLK2 gene, and is particularly associated with prostatic tissue. The KLK2 is a member of glandular kallikrein gene family that comprises 25 to 30 highly homologous genes that encode specific proteases involved in the processing of biologically active peptides. The KLK2 gene is mapped to 19q13.33. And the KLK2 gene contains 5 exons. An alternative KLK2 transcript, which they call KLK2-linked molecule (KLM), that arises from the use of an alternate donor site within intron 1. KLM shares only the N-terminal 15-amino acid signal peptide with the original KLK2 protein; the mature proteins display no similarity.

Overview

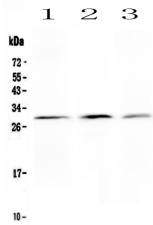
Product Name	Anti-Kallikrein 2/KLK2 Antibody Picoband®
Reactive Species	Human
Description	Boster Bio Anti-Kallikrein 2/KLK2 Antibody catalog # PA1626. Tested in IHC, WB applications. This antibody reacts with Human. The brand Picoband indicates this is a premium antibody that guarantees superior quality, high affinity, and strong signals with minimal background in Western blot applications. Only our best-performing antibodies are designated as Picoband, ensuring unmatched performance.
Application	IHC, WB
Clonality	Polyclonal
Formulation	Each vial contains antibody formulated with stabilizing components, 0.9mg NaCl, 0.2mg Na ₂ HPO ₄ , 0.05mg Thimerosal, 0.05mg NaN ₃ . *This antibody is supplied in a stabilized formulation. Compatibility with conjugation reactions depends on the chemistry of the conjugation method used. For conjugation methods that are not compatible with the stabilizing components present in this formulation, a carrier-free antibody format is required.
Storage Instructions	Store at -20°C for one year from date of receipt. After reconstitution, at 4°C for one month. It can also be aliquotted and stored frozen at -20°C for six months. Avoid repeated freeze-thaw cycles.
Host	Rabbit
Uniprot ID	P20151

Technical Details

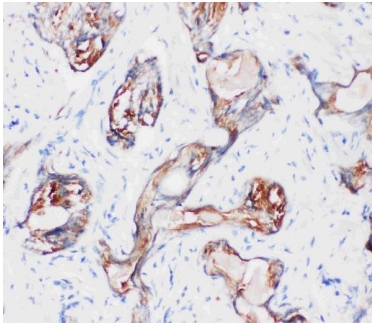
Immunogen	A synthetic peptide corresponding to a sequence at the C-terminus of human Kallikrein 2.
Recommended Detection Systems	Boster recommends Enhanced Chemiluminescent Kit with anti-Rabbit IgG (EK1002) for Western blot, and HRP Conjugated anti-Rabbit IgG Super Vision Assay Kit (SV0002-1) for IHC(P).

Cross Reactivity	No cross-reactivity with other proteins
Isotype	Rabbit IgG
Form	Lyophilized
Concentration	Adding 0.2 ml of distilled water will yield a concentration of 500 ug/ml.
Purification	Immunogen affinity purified.
Suggested Dilutions	Immunohistochemistry (Paraffin-embedded Section), 2-5ug/ml, Human Western blot, 0.1-0.5ug/ml, Human

Anti-Kallikrein 2/KLK2 Antibody Picoband® (PA1626) Images



Western blot analysis of Kallikrein 2 using anti-Kallikrein 2 antibody (PA1626). Electrophoresis was performed on a 5-20% SDS-PAGE gel at 70V (Stacking gel) / 90V (Resolving gel) for 2-3 hours. The sample well of each lane was loaded with 40 ug of sample under reducing conditions. Lane 1: human PANC whole cell lysates, Lane 2: human Hela whole cell lysates, Lane 3: human 293T whole cell lysates. After electrophoresis, proteins were transferred to a nitrocellulose membrane at 150 mA for 50-90 minutes. Blocked the membrane with 5% non-fat milk/TBS for 1.5 hour at RT. The membrane was incubated with rabbit anti-Kallikrein 2 antigen affinity purified polyclonal antibody (Catalog # PA1626) at 0.5 ug/mL overnight at 4°C, then washed with TBS-0.1%Tween 3 times with 5 minutes each and probed with a goat anti-rabbit IgG-HRP secondary antibody at a dilution of 1:5000 for 1.5 hour at RT. The signal is developed using an Enhanced Chemiluminescent detection (ECL) kit (Catalog # EK1002) with Tanon 5200 system. A specific band was detected for Kallikrein 2 at approximately 29 kDa. The expected band size for Kallikrein 2 is at 29 kDa.



IHC analysis of Kallikrein 2 using anti-Kallikrein 2 antibody (PA1626). Kallikrein 2 was detected in a paraffin-embedded section of human prostatic cancer tissue. Heat mediated antigen retrieval was performed in EDTA buffer (pH 8.0, epitope retrieval solution). The tissue section was blocked with 10% goat serum. The tissue section was then incubated with 2 ug/ml rabbit anti-Kallikrein 2 Antibody (PA1626) overnight at 4°C. Peroxidase Conjugated Goat Anti-rabbit IgG was used as secondary antibody and incubated for 30 minutes at 37°C. The tissue section was developed using HRP Conjugated Rabbit IgG Super Vision Assay Kit (Catalog # SV0002) with DAB as the chromogen.

Submit a product review to Biocompare.com

Submit a review of this product to Biocompare.com to receive a \$20 Amazon.com giftcard! Your reviews help your fellow scientists make the right decisions. Thank you for your contribution.



Anti-Kallikrein 2/KLK2 Antibody

For Research Use Only. Not for use in diagnostic procedures.