

Anti-Kallikrein 5/KLK5 Antibody Picoband®

Catalog Number: PA1630

About Klk5

KLK5 (Kallikrein-related peptidase 5), formerly known as stratum corneum tryptic enzyme (SCTE) or KLKL2, is a serine protease expressed in the epidermis. The KLK5 gene is one of the fifteen kallikrein subfamily members which is located on 19q13.41. KLK5 has been suggested to regulate cell shedding in conjunction with KLK7 and KLK14, given its ability to degrade proteins which form the extracellular component of cell junctions in the stratum corneum. The KLK5 gene contains 5 coding exons spanning 9.3. KLK5 expression is upregulated in a breast cancer cell line in the presence of estrogens and progestins and is associated with more aggressive forms of epithelial ovarian carcinoma.

Overview

Product Name	Anti-Kallikrein 5/KLK5 Antibody Picoband®
Reactive Species	Mouse, Rat
Description	Boster Bio Anti-Kallikrein 5/KLK5 Antibody catalog # PA1630. Tested in IHC, WB applications. This antibody reacts with Mouse, Rat. The brand Picoband indicates this is a premium antibody that guarantees superior quality, high affinity, and strong signals with minimal background in Western blot applications. Only our best-performing antibodies are designated as Picoband, ensuring unmatched performance.
Application	IHC, WB
Clonality	Polyclonal
Formulation	Each vial contains antibody formulated with stabilizing components, 0.9mg NaCl, 0.2mg Na ₂ HPO ₄ , 0.05mg Thimerosal, 0.05mg NaN ₃ . *This antibody is supplied in a stabilized formulation. Compatibility with conjugation reactions depends on the chemistry of the conjugation method used. For conjugation methods that are not compatible with the stabilizing components present in this formulation, a carrier-free antibody format is required.
Storage Instructions	Store at -20°C for one year from date of receipt. After reconstitution, at 4°C for one month. It can also be aliquotted and stored frozen at -20°C for six months. Avoid repeated freeze-thaw cycles.
Host	Rabbit
Uniprot ID	Q9D140

Technical Details

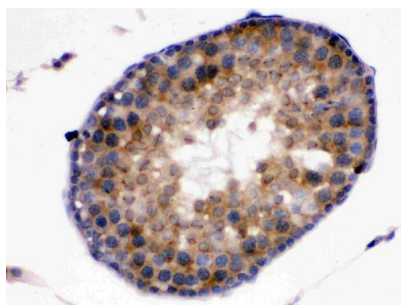
Immunogen	A synthetic peptide corresponding to a sequence at the C-terminus of mouse Kallikrein 5, different from the related rat sequence by three amino acids.
Recommended Detection Systems	Boster recommends Enhanced Chemiluminescent Kit with anti-Rabbit IgG (EK1002) for Western blot, and HRP Conjugated anti-Rabbit IgG Super Vision Assay Kit (SV0002-1) for IHC(P).
Cross Reactivity	No cross-reactivity with other proteins

Isotype	Rabbit IgG
Form	Lyophilized
Concentration	Adding 0.2 ml of distilled water will yield a concentration of 500 ug/ml.
Purification	Immunogen affinity purified.
Suggested Dilutions	Immunohistochemistry (Paraffin-embedded Section), 0.5-1ug/ml, Rat, Mouse Western blot, 0.1-0.5ug/ml, Mouse

Anti-Kallikrein 5/KLK5 Antibody Picoband® (PA1630) Images



Anti-Kallikrein 5 antibody, PA1630, Western blottingWB:
Mouse Liver Tissue Lysate



Anti-Kallikrein 5 antibody, PA1630, IHC(P)IHC(P): Rat Testis
Tissue

Submit a product review to Biocompare.com

Submit a review of this product to Biocompare.com to receive a \$20 Amazon.com giftcard! Your reviews help your fellow scientists make the right decisions. Thank you for your contribution.



Anti-Kallikrein 5/KLK5 Antibody

For Research Use Only. Not for use in diagnostic procedures.