

Anti-MRP1/ABCC1 Antibody Picoband®

Catalog Number: PA1634

About ABCC1

Multidrug resistance-associated protein 1 (MRP1) is a protein that in humans is encoded by the ABCC1 gene. The protein encoded by this gene is a member of the superfamily of ATP-binding cassette (ABC) transporters. ABC proteins transport various molecules across extra- and intra-cellular membranes. ABC genes are divided into seven distinct subfamilies (ABC1, MDR/TAP, MRP, ALD, OABP, GCN20, White). This full transporter is a member of the MRP subfamily which is involved in multi-drug resistance. This protein functions as a multispecific organic anion transporter, with oxidized glutathione, cysteinyl leukotrienes, and activated aflatoxin B1 as substrates. This protein also transports glucuronides and sulfate conjugates of steroid hormones and bile salts. Alternatively spliced variants of this gene have been described but their full-length nature is unknown.

Overview

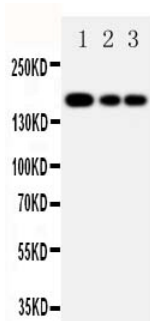
Product Name	Anti-MRP1/ABCC1 Antibody Picoband®
Reactive Species	Human, Mouse, Rat
Description	Boster Bio Anti-MRP1/ABCC1 Antibody catalog # PA1634. Tested in IHC, WB applications. This antibody reacts with Human, Mouse, Rat. The brand Picoband indicates this is a premium antibody that guarantees superior quality, high affinity, and strong signals with minimal background in Western blot applications. Only our best-performing antibodies are designated as Picoband, ensuring unmatched performance.
Application	IHC, WB
Clonality	Polyclonal
Formulation	Each vial contains antibody formulated with stabilizing components, 0.9mg NaCl, 0.2mg Na ₂ HPO ₄ , 0.05mg Thimerosal, 0.05mg NaN ₃ . *This antibody is supplied in a stabilized formulation. Compatibility with conjugation reactions depends on the chemistry of the conjugation method used. For conjugation methods that are not compatible with the stabilizing components present in this formulation, a carrier-free antibody format is required.
Storage Instructions	Store at -20°C for one year from date of receipt. After reconstitution, at 4°C for one month. It can also be aliquotted and stored frozen at -20°C for six months. Avoid repeated freeze-thaw cycles.
Host	Rabbit
Uniprot ID	P33527

Technical Details

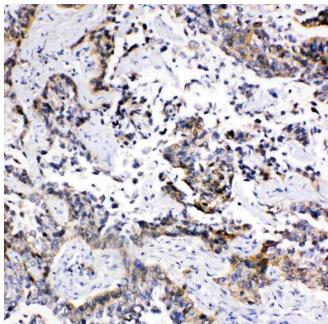
Immunogen	A synthetic peptide corresponding to a sequence at the C-terminus of human MRP1, different from the related rat and mouse sequences by one amino acid.
Recommended Detection Systems	Boster recommends Enhanced Chemiluminescent Kit with anti-Rabbit IgG (EK1002) for Western

	blot, and HRP Conjugated anti-Rabbit IgG Super Vision Assay Kit (SV0002-1) for IHC(P).
Cross Reactivity	No cross-reactivity with other proteins
Isotype	Rabbit IgG
Form	Lyophilized
Concentration	Adding 0.2 ml of distilled water will yield a concentration of 500 ug/ml.
Purification	Immunogen affinity purified.
Suggested Dilutions	Immunohistochemistry (Paraffin-embedded Section), 0.5-1ug/ml, Human, Mouse, Rat Western blot, 0.1-0.5ug/ml, Human, Rat, Mouse

Anti-MRP1/ABCC1 Antibody Picoband® (PA1634) Images



Anti-MRP1 antibody, PA1634, Western blotting Lane 1: JURKAT Cell Lysate Lane 2: CEM Cell Lysate Lane 3: A549 Cell Lysate



Anti-MRP1 antibody, PA1634, IHC(P)IHC(P): Human Lung Cancer Tissue

6 Publications Citing This Product

1. PubMed ID: 26543365, Enhanced combination therapy effect on paclitaxel-resistant carcinoma by chloroquine co-delivery via liposomes
2. PubMed ID: 29217817, Acetazolamide Suppresses Multi-Drug Resistance-Related Protein 1 and P-Glycoprotein Expression by Inhibiting Aquaporins Expression in a Mesial Temporal Epilepsy Rat Model
3. PubMed ID: 24175763, Wang Nn, Zhao Lj, Wu Ln, He Mf, Qu Jw, Zhao Yb, Zhao Wz, Li Js, Wang Jh. Asian Pac J Cancer Prev. 2013;14(9):4983-8. Mechanistic Analysis Of Taxol-Induced Multidrug Resistance In An Ovarian Cancer Cell Line.

Visit bosterbio.com/anti-mrp1-antibody-pa1634-boster.html to see all 6 publications.

Submit a product review to Biocompare.com

Submit a review of this product to Biocompare.com to receive a \$20 Amazon.com giftcard! Your reviews help your fellow scientists make the right decisions. Thank you for your contribution.



Anti-MRP1/ABCC1 Antibody

For Research Use Only. Not for use in diagnostic procedures.