

Anti-MCM4 Antibody

Catalog Number: PA1652

About MCM4

MCM4(MINICHROMOSOME MAINTENANCE, S. CEREVISIAE, HOMOLOG OF, 4), also called CDC21, S. POMBE, HOMOLOG OF, is a protein that in humans is encoded by the MCM4 gene. MCM4 is one of the highly conserved mini-chromosome maintenance proteins(MCM) that are essential for the initiation of eukaryotic genome replication. The MCM4 gene is mapped to 8q11.21. The 864-amino acid MCM4 protein has an observed molecular mass of 97 kD by SDS-PAGE, which is similar to its calculated molecular mass of 96.6 kD. Western blot analysis with and without phosphatase treatment suggested that MCM4 is highly phosphorylated in mitotic cells. In the absence of DDK, CDK phosphorylation at the distal part of the Mcm4 NSD becomes crucial. MCM4 encodes a subunit of the MCM2-7 complex(also known as MCM2-MCM7), the replication licensing factor and presumptive replicative helicase.

Overview

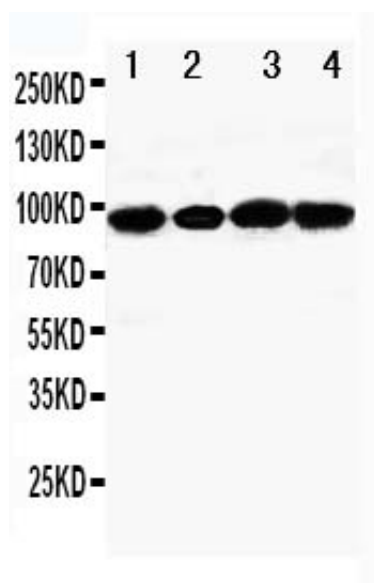
| | |
|----------------------|---|
| Product Name | Anti-MCM4 Antibody |
| Reactive Species | Human, Mouse, Rat |
| Description | Rabbit IgG polyclonal antibody for DNA replication licensing factor MCM4(MCM4) detection. Tested with WB in Human;Mouse;Rat. |
| Application | WB |
| Clonality | Polyclonal |
| Formulation | Each vial contains 5mg BSA, 0.9mg NaCl, 0.2mg Na ₂ HPO ₄ , 0.05mg Thimerosal, 0.05mg NaN ₃ . |
| Storage Instructions | At -20°C for one year. After reconstitution, at 4°C for one month. It can also be aliquotted and stored frozen at -20°C for a longer time. Avoid repeated freezing and thawing. |
| Host | Rabbit |
| Uniprot ID | P33991 |

Technical Details

| | |
|-----------|--|
| Immunogen | A synthetic peptide corresponding to a sequence at the C-terminus of human |
|-----------|--|

| | |
|-------------------------------|--|
| | MCM4(815-829aa TPALKYQQLFEDIRG), identical to the related rat and mouse sequences. |
| Predicted Reactive Species | Hamster |
| Recommended Detection Systems | Boster recommends Enhanced Chemiluminescent Kit with anti-Rabbit IgG (EK1002) for Western blot. |
| Cross Reactivity | No cross reactivity with other proteins |
| Isotype | N/A |
| Form | Lyophilized |
| Concentration | Add 0.2ml of distilled water will yield a concentration of 500ug/ml. |
| Purification | Immunogen affinity purified. |
| Suggested Dilutions | Western blot, 0.1-0.5µg/ml, Human, Mouse, Rat |
| | For protocols please visit https://www.bosterbio.com/protocol-and-troubleshooting/ |

Anti-MCM4 Antibody (PA1652) Images



Anti-MCM4 antibody, PA1652, Western blotting

Lane 1: PANC Cell Lysate

Lane 2: HELA Cell Lysate

Lane 3: U2OS Cell Lysate

Lane 4: JURKAT Cell Lysate

Submit a product review to [Biocompare.com](https://www.biocompare.com)

Submit a review of this product to Biocompare.com to receive a \$20 Amazon giftcard! Your reviews help your fellow scientists make the right decisions. Thank you for your contribution.

