

Anti-Lipocalin-1 LCN1 Antibody Picoband®

Catalog Number: PA1659

About LCN1

Lipocalin-1 (LCN1), also known as PREALBUMIN, TEAR or VEGP, is a protein that in humans is encoded by the LCN1 gene. Lipocalin-1 is a member of the lipocalin family of small secretory proteins, which is mapped on 9q34.3. Lipocalin-1 is the primary lipid binding protein in tears and is overproduced in response to multiple stimuli including infection and stress. It may be a marker for chromosome aneuploidy as well as an autoantigen in Sjogren's syndrome. LCN1 inhibits the cysteine-protease papain in vitro, similar to cystatins. And LCN1 plays a role in the nonimmunologic defense and in the control of inflammatory processes in oral and ocular tissues. The investigations presented the first clear evidence that LCN1 is induced in infection or inflammation and supported the idea that this lipocalin functions as a physiologic protection factor of epithelia in vivo.

Overview

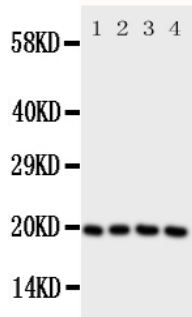
Product Name	Anti-Lipocalin-1 LCN1 Antibody Picoband®
Reactive Species	Human
Description	Boster Bio Anti-Lipocalin-1 LCN1 Antibody catalog # PA1659. Tested in IHC, WB applications. This antibody reacts with Human. The brand Picoband indicates this is a premium antibody that guarantees superior quality, high affinity, and strong signals with minimal background in Western blot applications. Only our best-performing antibodies are designated as Picoband, ensuring unmatched performance.
Application	IHC, WB
Clonality	Polyclonal
Formulation	Each vial contains antibody formulated with stabilizing components, 0.9mg NaCl, 0.2mg Na ₂ HPO ₄ , 0.05mg Thimerosal, 0.05mg NaN ₃ . *This antibody is supplied in a stabilized formulation. Compatibility with conjugation reactions depends on the chemistry of the conjugation method used. For conjugation methods that are not compatible with the stabilizing components present in this formulation, a carrier-free antibody format is required.
Storage Instructions	Store at -20°C for one year from date of receipt. After reconstitution, at 4°C for one month. It can also be aliquotted and stored frozen at -20°C for six months. Avoid repeated freeze-thaw cycles.
Host	Rabbit
Uniprot ID	P31025

Technical Details

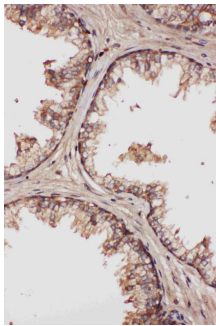
Immunogen	A synthetic peptide corresponding to a sequence in the middle region of human LCN1.
Recommended Detection Systems	Boster recommends Enhanced Chemiluminescent Kit with anti-Rabbit IgG (EK1002) for Western blot, and HRP Conjugated anti-Rabbit IgG Super Vision Assay Kit (SV0002-1) for IHC(P).

Cross Reactivity	No cross-reactivity with other proteins
Isotype	Rabbit IgG
Form	Lyophilized
Concentration	Adding 0.2 ml of distilled water will yield a concentration of 500 ug/ml.
Purification	Immunogen affinity purified.
Suggested Dilutions	Immunohistochemistry (Paraffin-embedded Section), 0.5-1ug/ml, Human Western blot, 0.1-0.5ug/ml, Human

Anti-Lipocalin-1 LCN1 Antibody Picoband® (PA1659) Images



Anti-LCN1 antibody, PA1659, Western blotting All lanes: Anti LCN1 (PA1659) at 0.5ug/ml Lane 1: JURKAT Whole Cell Lysate at 40ug Lane 2: COLO320 Whole Cell Lysate at 40ug Lane 3: SCG Whole Cell Lysate at 40ug Lane 4: HELA Whole Cell Lysate at 40ug Predicted bind size: 19KD Observed bind size: 19KD



Anti-LCN1 antibody, PA1659, IHC(P) IHC(P): Human Prostatic Cancer Tissue

Submit a product review to [Biocompare.com](https://www.biocompare.com)

Submit a review of this product to [Biocompare.com](https://www.biocompare.com) to receive a \$20 Amazon.com giftcard! Your reviews help your fellow scientists make the right decisions. Thank you for your contribution.



Anti-Lipocalin-1 LCN1 Antibody

For Research Use Only. Not for use in diagnostic procedures.