

Anti-Estrogen Inducible Protein pS2/TFF1 Antibody Picoband®

Catalog Number: PA1689

About TFF1

TFF1 (Trefoil factor 1), also known as pS2, is a protein that in humans is encoded by the TFF1 gene. Members of the trefoil family are characterized by having at least one copy of the trefoil motif, a 40-amino acid domain that contains three conserved disulfides. They are stable secretory proteins expressed in gastrointestinal mucosa. Their functions are not defined, but they may protect the mucosa from insults, stabilize the mucus layer, and affect healing of the epithelium. It is found that TFF1 in normal human urine inhibited the growth of calcium oxalate crystals. Urinary TFF1 showed an inhibitory potency similar to that of nephrocalcin, and inhibition was dose dependent and inhibited by TFF1 antisera, particularly by antisera directed to the TFF1 C terminus. Concentrations and relative amounts of TFF1 in the urine of patients with idiopathic calcium oxalate kidney stones were significantly less than those found in controls. This gene, which is expressed in the gastric mucosa, has also been studied because of its expression in human tumors. This gene and two other related trefoil family member genes are found in a cluster on chromosome 21.

Overview

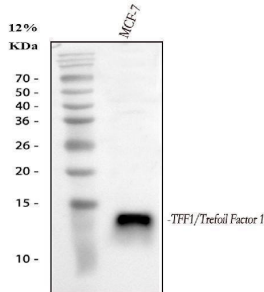
Product Name	Anti-Estrogen Inducible Protein pS2/TFF1 Antibody Picoband®
Reactive Species	Human
Description	Boster Bio Anti-Estrogen Inducible Protein pS2/TFF1 Antibody catalog # PA1689. Tested in IHC, WB applications. This antibody reacts with Human. The brand Picoband indicates this is a premium antibody that guarantees superior quality, high affinity, and strong signals with minimal background in Western blot applications. Only our best-performing antibodies are designated as Picoband, ensuring unmatched performance.
Application	IHC, WB
Clonality	Polyclonal
Formulation	Each vial contains antibody formulated with stabilizing components, 0.9mg NaCl, 0.2mg Na ₂ HPO ₄ , 0.05mg Thimerosal, 0.05mg NaN ₃ . *This antibody is supplied in a stabilized formulation. Compatibility with conjugation reactions depends on the chemistry of the conjugation method used. For conjugation methods that are not compatible with the stabilizing components present in this formulation, a carrier-free antibody format is required.
Storage Instructions	Store at -20°C for one year from date of receipt. After reconstitution, at 4°C for one month. It can also be aliquotted and stored frozen at -20°C for six months. Avoid repeated freeze-thaw cycles.
Host	Rabbit
Uniprot ID	P04155

Technical Details

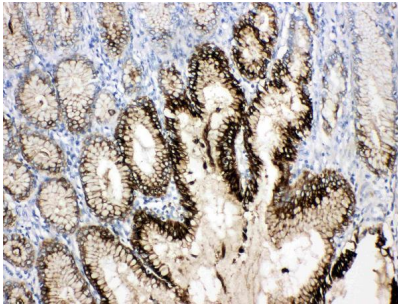
Immunogen	A synthetic peptide corresponding to a sequence in the middle region of human Estrogen Inducible Protein pS2.
-----------	---

Recommended Detection Systems	Boster recommends Enhanced Chemiluminescent Kit with anti-Rabbit IgG (EK1002) for Western blot, and HRP Conjugated anti-Rabbit IgG Super Vision Assay Kit (SV0002-1) for IHC(P).
Cross Reactivity	No cross-reactivity with other proteins
Isotype	Rabbit IgG
Form	Lyophilized
Concentration	Adding 0.2 ml of distilled water will yield a concentration of 500 ug/ml.
Purification	Immunogen affinity purified.
Suggested Dilutions	Immunohistochemistry (Paraffin-embedded Section), 0.5-1ug/ml, Human Western blot, 0.1-0.5ug/ml, Human

Anti-Estrogen Inducible Protein pS2/TFF1 Antibody Picoband® (PA1689) Images



Western blot analysis of TFF1 using anti-TFF1 antibody (PA1689). Electrophoresis was performed on a 5-20% SDS-PAGE gel at 70V (Stacking gel) / 90V (Resolving gel) for 2-3 hours. The sample well of each lane was loaded with 30 ug of sample under reducing conditions. Lane 1: human MCF-7 whole cell lysates. After electrophoresis, proteins were transferred to a nitrocellulose membrane at 150 mA for 50-90 minutes. Blocked the membrane with 5% non-fat milk/TBS for 1.5 hour at RT. The membrane was incubated with rabbit anti-TFF1 antigen affinity purified polyclonal antibody (Catalog # PA1689) at 0.5 ug/mL overnight at 4°C, then washed with TBS-0.1%Tween 3 times with 5 minutes each and probed with a goat anti-rabbit IgG-HRP secondary antibody at a dilution of 1:5000 for 1.5 hour at RT. The signal is developed using an Enhanced Chemiluminescent detection (ECL) kit (Catalog # EK1002) with Tanon 5200 system. A specific band was detected for TFF1 at approximately 12 kDa. The expected band size for TFF1 is at 9 kDa.



Anti-Estrogen Inducible Protein Ps2 antibody, PA1689,
IHC(P)IHC(P): Human Gastric Cancer Tissue

Submit a product review to Biocompare.com

Submit a review of this product to Biocompare.com to receive a \$20 Amazon.com giftcard! Your reviews help your fellow scientists make the right decisions. Thank you for your contribution.



Anti-Estrogen Inducible Protein pS2/TFF1 Antibody

For Research Use Only. Not for use in diagnostic procedures.