

Anti-Estrogen Inducible Protein pS2/TFF1 Antibody

Catalog Number: PA1690

About Tff1

TFF1 (Trefoil factor 1), also known as pS2, is a protein that in humans is encoded by the TFF1 gene. Members of the trefoil family are characterized by having at least one copy of the trefoil motif, a 40-amino acid domain that contains three conserved disulfides. They are stable secretory proteins expressed in gastrointestinal mucosa. Their functions are not defined, but they may protect the mucosa from insults, stabilize the mucus layer, and affect healing of the epithelium. It is found that TFF1 in normal human urine inhibited the growth of calcium oxalate crystals. Urinary TFF1 showed an inhibitory potency similar to that of nephrocalcin, and inhibition was dose dependent and inhibited by TFF1 antisera, particularly by antisera directed to the TFF1 C terminus. Concentrations and relative amounts of TFF1 in the urine of patients with idiopathic calcium oxalate kidney stones were significantly less than those found in controls. This gene, which is expressed in the gastric mucosa, has also been studied because of its expression in human tumors. This gene and two other related trefoil family member genes are found in a cluster on chromosome 21.

Overview

Product Name	Anti-Estrogen Inducible Protein pS2/TFF1 Antibody
Reactive Species	Rat
Description	Boster Bio Anti-Estrogen Inducible Protein pS2/TFF1 Antibody catalog # PA1690. Tested in IHC, WB applications. This antibody reacts with Rat.
Application	IHC, WB
Clonality	Polyclonal
Formulation	Each vial contains 5mg BSA, 0.9mg NaCl, 0.2mg Na2HPO4, 0.05mg Thimerosal, 0.05mg NaN3.
Storage Instructions	Store at -20°C for one year from date of receipt. After reconstitution, at 4°C for one month. It can also be aliquotted and stored frozen at -20°C for six months. Avoid repeated freeze-thaw cycles.
Host	Rabbit
Uniprot ID	Q08423

Technical Details

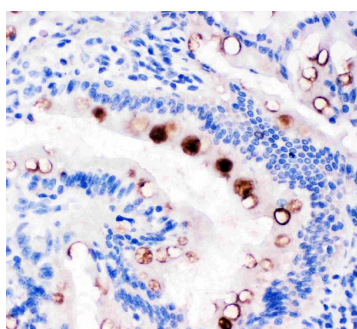
Immunogen	A synthetic peptide corresponding to a sequence in the middle region of mouse Estrogen Inducible Protein pS2, identical to the related rat sequence.
Predicted Reactive Species	Hamster
Recommended Detection Systems	Boster recommends Enhanced Chemiluminescent Kit with anti-Rabbit IgG (EK1002) for Western blot, and HRP Conjugated anti-Rabbit IgG Super Vision Assay Kit (SV0002-1) for IHC(P).
Cross Reactivity	No cross-reactivity with other proteins
Isotype	Rabbit IgG

Form	Lyophilized
Concentration	Adding 0.2 ml of distilled water will yield a concentration of 500 ug/ml.
Purification	Immunogen affinity purified.
Suggested Dilutions	<p>Dilute the sample so that the expected range of concentrations fall within the detection range of this kit.</p> <p>If the expected range of concentration is unknown, a pilot test should be conducted to decide the optimal dilution ratio for your samples.</p> <p>Some PubMed article(s) citing the expression level of this target are as follows:</p> <p>Boster Bio's internal QC testing used:</p> <p>Western blot, 0.1-0.5ug/ml, Rat</p> <p>Immunohistochemistry (Paraffin-embedded Section), 0.5-1ug/ml, Rat, By Heat</p>

Anti-Estrogen Inducible Protein pS2/TFF1 Antibody (PA1690) Images



Anti-Estrogen Inducible Protein pS2 antibody, PA1690,
Western blotting
WB: Rat Stomach Tissue Lysate



Anti-Estrogen Inducible Protein pS2 antibody, PA1690, IHC(P)
IHC(P): Rat Intestine Tissue

Submit a product review to Biocompare.com

Submit a review of this product to Biocompare.com to receive a \$20 Amazon.com giftcard! Your reviews help your fellow scientists make the right decisions. Thank you for your contribution.



Anti-Estrogen Inducible Protein pS2/TFF1 Antibody